

WAAS CH 56605 W05A	APP CRS 047°	Rwy Idg TDZE Apt Elev	5003 1219 1219
--	------------------------	-----------------------------	---

RNAV (GPS) RWY 5

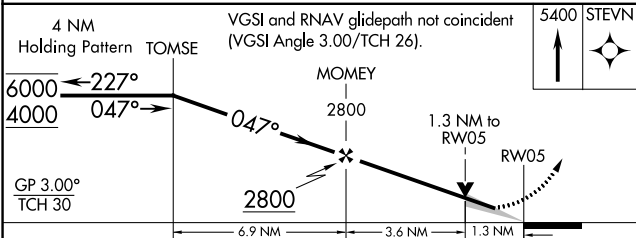
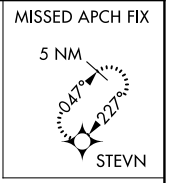
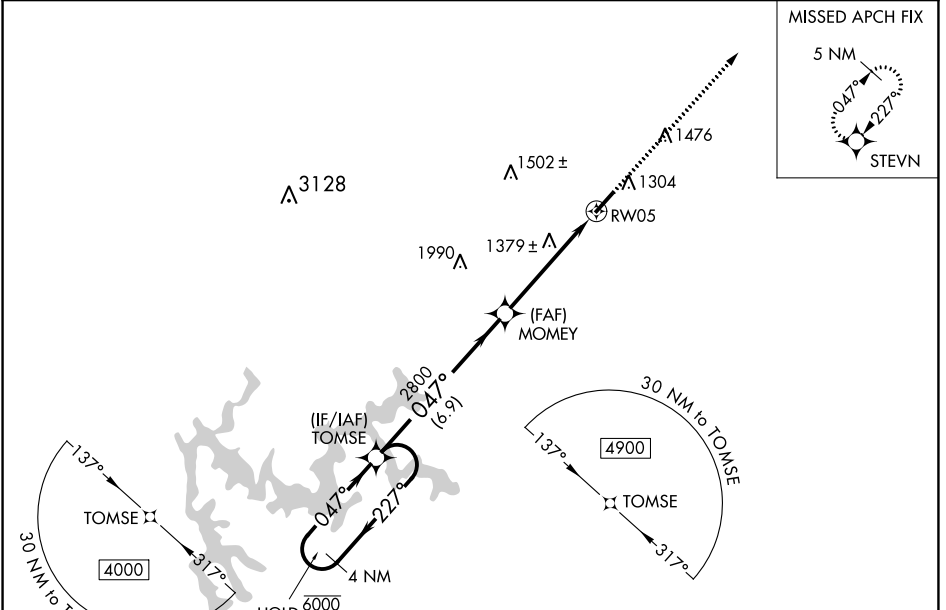
CHEROKEE COUNTY RGNL (CNI)

RNP APCH-GPS.

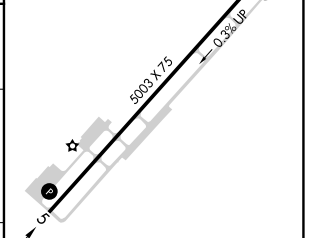
▼ Circling Rwy 23 NA at night.
 ▲ For uncompensated Baro-VNAV systems, LNAV/VNAV NA below -17°C or above 36°C.

MISSED APPROACH: Climb to 5400 direct STEVN and hold, continue climb-in-hold to 5400.

AWOS-3PT 119.825	ATLANTA APP CON 121.0 268.7	UNICOM 123.0 (CTAF) 0
----------------------------	---------------------------------------	---------------------------------



ELEV 1219	TDZE 1219
-----------	-----------



CATEGORY	A	B	C	D
LPV DA		1469-7/8	250 (300-7/8)	
LNAV/VNAV DA		1554-1 1/8	335 (400-1 1/8)	
LNAV MDA	1640-1	421 (500-1)	1640-1 1/4	421 (500-1 1/4)
C CIRCLING	1720-1	501 (600-1)	1820-1 3/4	2040-2 3/4
			601 (700-1 3/4)	821 (900-2 3/4)

REIL Rwy 5 and 23 0
 MIRL Rwy 5-23 0

SE-4, 26 DEC 2024 to 23 JAN 2025

SE-4, 26 DEC 2024 to 23 JAN 2025