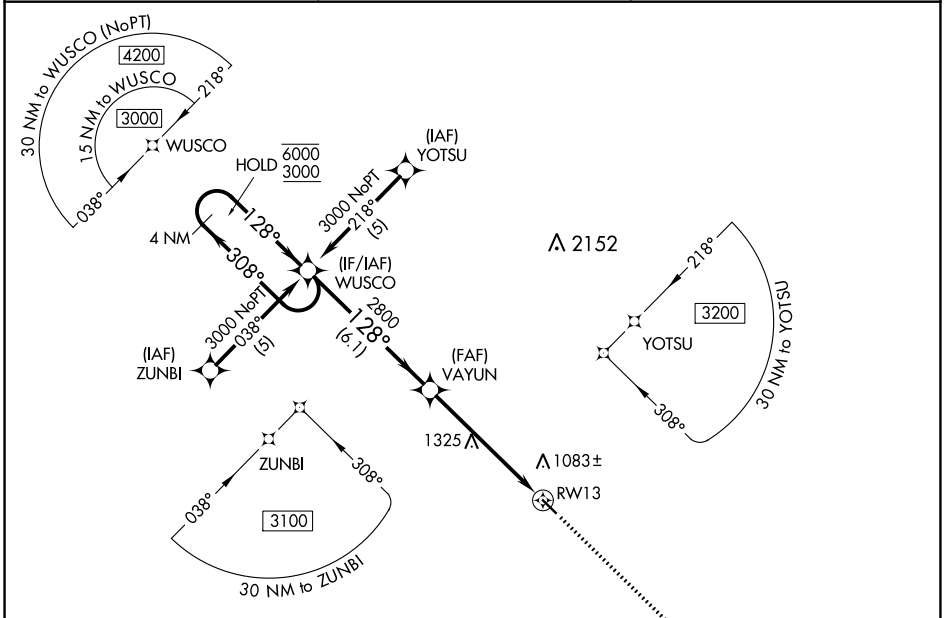


APP CRS	Rwy Idg	3901
128°	TDZE	933
	Apt Elev	933

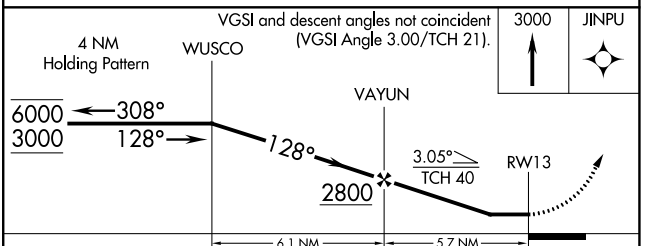
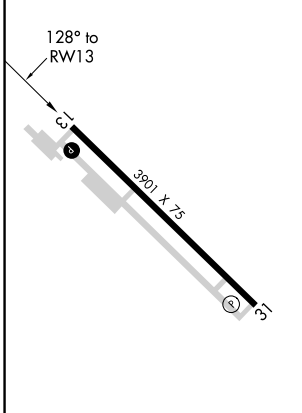
RNAV (GPS) RWY 13

CASSELTON ROBERT MILLER RGNL (5N8)

RNP APCH.		MISSED APPROACH: Climb to 3000 direct JINPU and hold.
<p>▽ Rwy 13 helicopter visibility reduction below 3/4 SM NA. Use Fargo altimeter setting; when not received use Morehead altimeter setting and increase all MDA 20 feet.</p> <p>△ NA</p>	FAR ASOS 124.5 379.2	FARGO APP CON 120.4 377.15
		UNICOM 122.8 (CTAF) ①



ELEV 933	TDZE 933
----------	----------



CATEGORY	A	B	C	D
LNAV MDA	1620-1	687 (700-1)	1620-2 687 (700-2)	NA

REIL Rwy 31 ①
MIRL Rwy 13-31 ①

NC-1, 26 DEC 2024 to 23 JAN 2025

NC-1, 26 DEC 2024 to 23 JAN 2025