

WAAS CH 45636 W21A	APP CRS 218°	Rwy Idg TDZE Apt Elev	6001 3972 3979
---------------------------------	------------------------	-----------------------------	---

RNAV (GPS) RWY 21

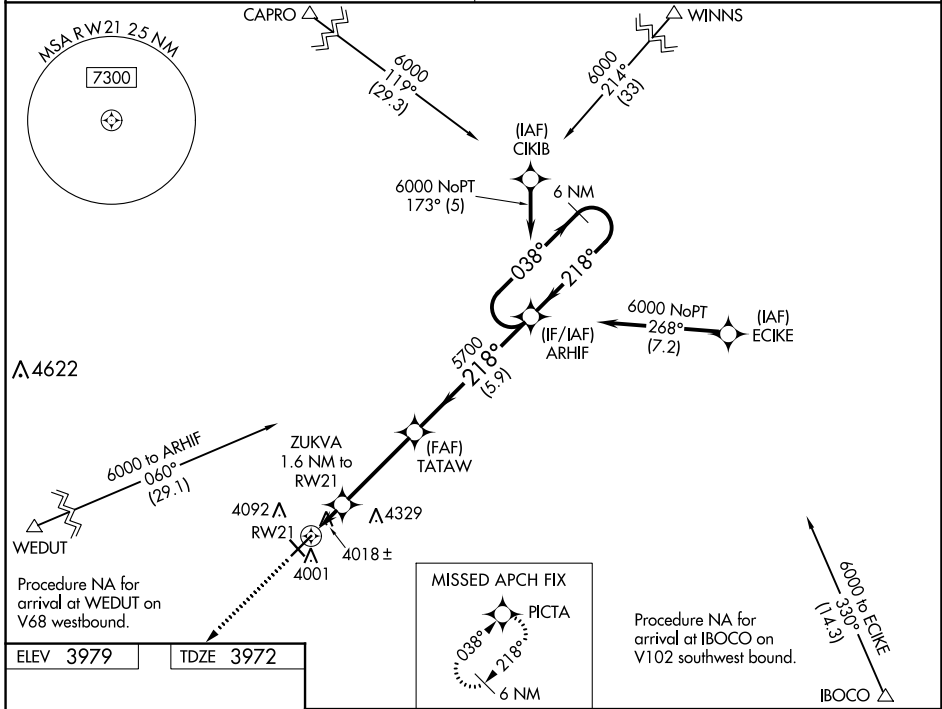
LEA COUNTY/ZIP FRANKLIN MEML (E06)

NA Baro-VNAV NA. DME/DME RNP-0.3 NA. Use Hobbs altimeter setting, when not received, procedure NA. Helicopter visibility reduction below 3/4 SM NA. Night landing: Rwy 3, 12, 30 NA.

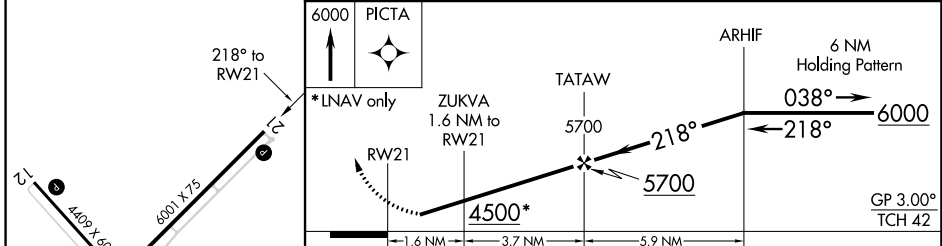
MISSED APPROACH: Climb to 6000 direct PICTA and hold.

FORT WORTH CENTER **133.1 298.95**

UNICOM **122.8 (CTAF) 0**



ELEV 3979	TDZE 3972
-----------	-----------



CATEGORY	A	B	C	D
LPV DA	4310-1 1/8	338 (400-1 1/8)		NA
LNAV/VNAV DA	4310-1 1/8	338 (400-1 1/8)		NA
LNAV MDA	4360-1	388 (400-1)	4360-1 1/8 388 (400-1 1/8)	NA
C CIRCLING	4480-1	501 (600-1)	4720-2 1/4 741 (800-2 1/4)	NA

SW-1, 26 DEC 2024 to 23 JAN 2025

SW-1, 26 DEC 2024 to 23 JAN 2025

MIRL Rwy 3-21 and 12-30 0