

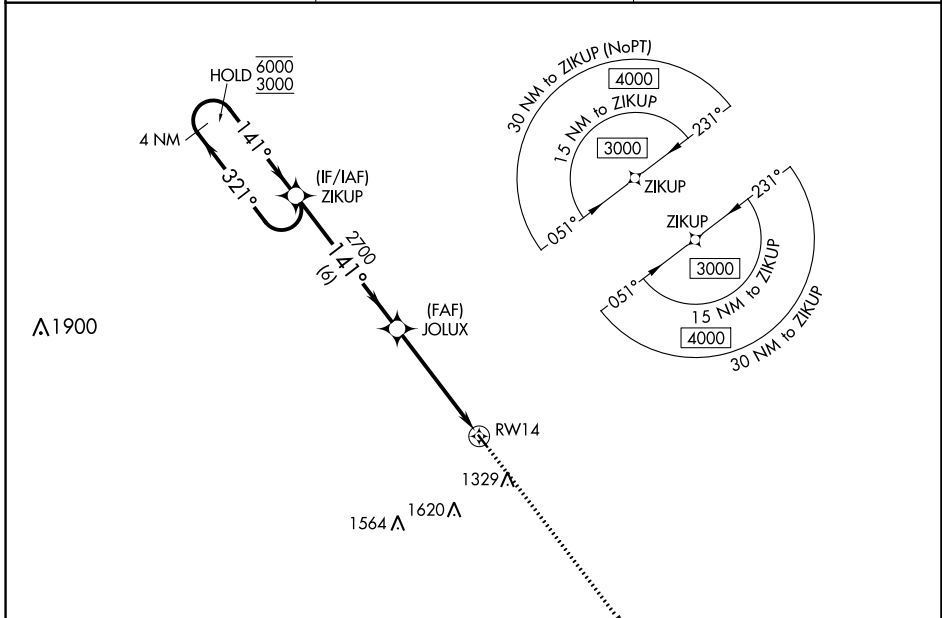
APP CRS	Rwy Idg	2827
141°	TDZE	1116
	Apt Elev	1116

RNAV (GPS) RWY 14

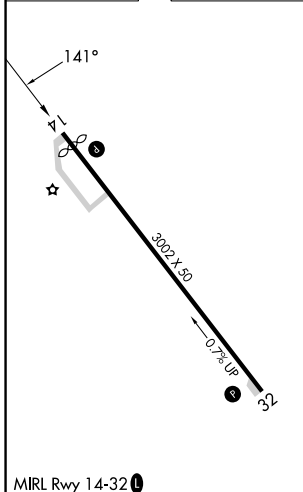
WINTERSET MUNI (3Y3)

RNP APCH.	<p>▼ Circling NA for Cat B southwest of Rwy 14-32. Procedure NA at night.</p> <p>▲ NA Rwy 14 helicopter visibility reduction below 1 SM NA. Use Osceola altimeter setting.</p>	MISSED APPROACH: Climb to 3000 direct JUNUG and hold.
-----------	--	---

I75 AWOS-3 120.975	DES MOINES APP CON 123.9 360.7	UNICOM 122.7 (CTAF) 0
------------------------------	--	---------------------------------



ELEV 1116	TDZE 1116
-----------	-----------



VGSI and descent angles not coincident (VGSI Angle 3.00/TCH 32).

4 NM Holding Pattern

ZIKUP

JOLUX

2700

3.00° TCH 40

RWY 14

6 NM

4.9 NM

CATEGORY	A	B	C	D
LNAV MDA	1640-1	524 (600-1)	NA	
C CIRCLING	1640-1 524 (600-1)	1700-1 584 (600-1)	NA	

NC-3, 26 DEC 2024 to 23 JAN 2025

NC-3, 26 DEC 2024 to 23 JAN 2025