

APP CRS	Rwy Idg	3700
354°	TDZE	12
	Apt Elev	12

RNAV (GPS) RWY 35

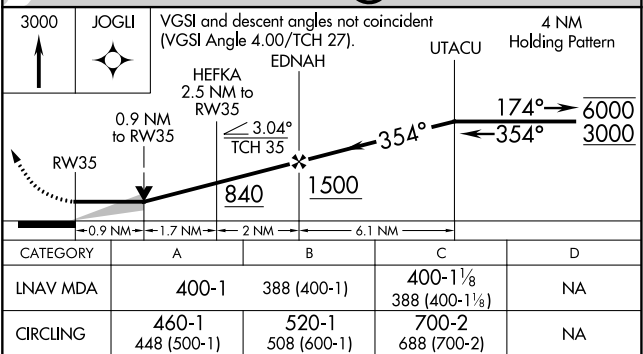
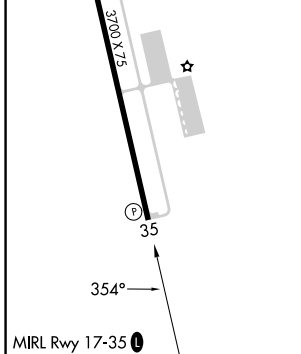
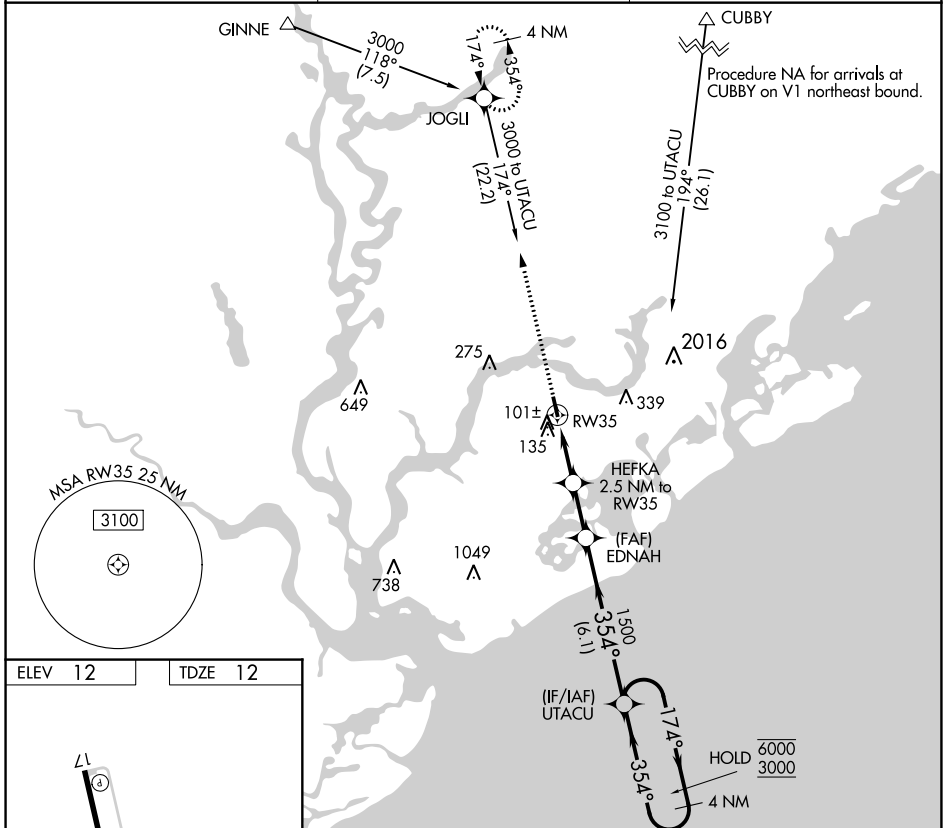
MT PLEASANT RGNL-FAISON FLD (L.R.O)

RNP APCH - GPS.

▽
▲

MISSED APPROACH: Climb to 3000 direct JOGLI and hold, continue climb-in-hold to 3000.

AWOS-3 118.625	CHARLESTON APP CON 121.275 379.925	UNICOM 122.7 (CTAF) 0
--------------------------	--	---------------------------------



SE-2, 26 DEC 2024 to 23 JAN 2025

SE-2, 26 DEC 2024 to 23 JAN 2025