

WAAS CH 48915 W36A	APP CRS 005°	Rwy Idg 5001 TDZE 458 Apt Elev 458
--	------------------------	---

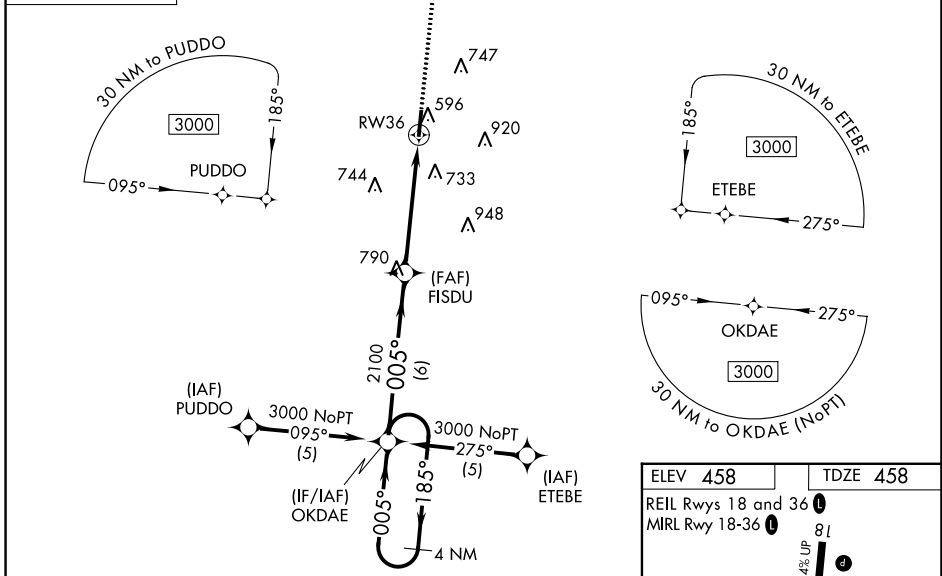
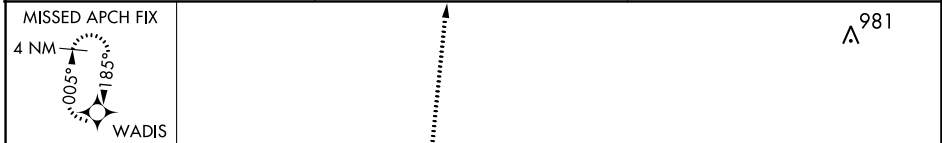
RNAV (GPS) RWY 36

PHILADELPHIA MUNI (MPPE)

⚠ For uncompensated Baro-VNAV systems, LNAV/VNAV NA below -1.5°C (5°F) or above 48°C (118°F). DME/DME RNP-0.3 NA. Visibility reduction by helicopters NA. When local altimeter setting not received, use Key Fld altimeter setting and increase all DA 101 feet and all MDA 120 feet and increase LPV, LNAV/VNAV all Cats, LNAV Cats C and D visibility ½ mile, increase Circling Cats C and D visibility ¼ mile. Baro-VNAV and VDP NA when using Key Fld altimeter setting.

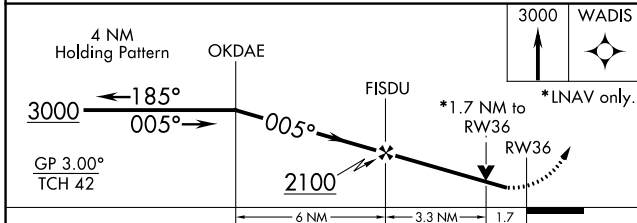
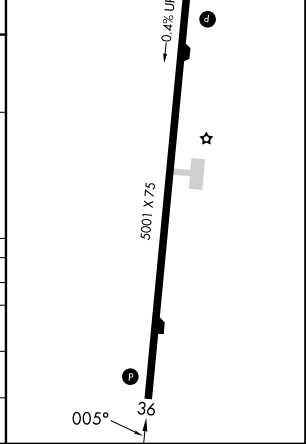
MISSED APPROACH:
Climb to 3000 direct WADIS and hold.

AWOS-3P 118.725	MEMPHIS CENTER 132.75 263.0	UNICOM 123.0 (CTAF)
---------------------------	---------------------------------------	-------------------------------



ELEV 458	TDZE 458
-----------------	-----------------

REIL Rwy 18 and 36
MIRL Rwy 18-36



CATEGORY	A	B	C	D
LPV DA		838-1¼	380 (400-1¼)	
LNAV/VNAV DA		1107-2¼	649 (700-2¼)	
LNAV MDA	1040-1	582 (600-1)	1040-1½ 582 (600-1½)	1040-1¾ 582 (600-1¾)
CIRCLING	1060-1	602 (700-1)	1280-2½ 822 (900-2½)	1280-2¾ 822 (900-2¾)

SC-4, 26 DEC 2024 to 23 JAN 2025

SC-4, 26 DEC 2024 to 23 JAN 2025