


LOC/DME I-UKF <b>111.55</b> Chan 52(Y)	APP CRS <b>007°</b>	Rwy Idg TDZE Apt Elev <b>6201</b> <b>1276</b> <b>1303</b>
--	------------------------	--

# ILS Z or LOC Z RWY 1

WILKES COUNTY (UKF)

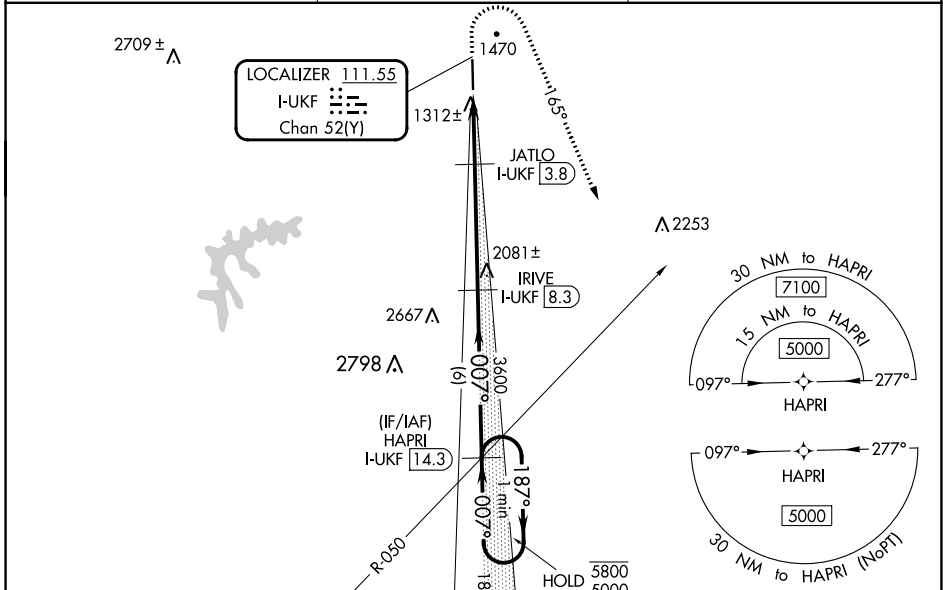
DME required. RNAV 1-GPS required.

VDP NA when using Hickory altimeter setting. When local altimeter setting not received, use Hickory altimeter setting and increase S-ILS DA to 1569 feet and all MDAs 100 feet, and increase S-LOC Cats C/D visibility  $\frac{3}{8}$  SM and Circling Cat C visibility  $\frac{1}{2}$  SM. For inop ALS when using Hickory altimeter setting, increase S-ILS all Cats visibility and S-LOC Cat C/D visibility  $\frac{3}{8}$  SM.

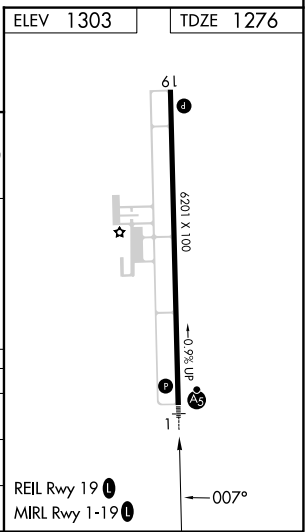
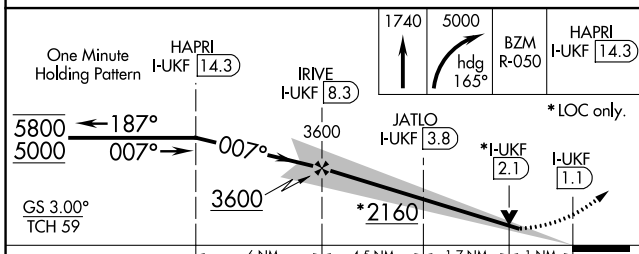
MALSR 

MISSED APPROACH: Climb to 1740 then climbing right turn to 5000 heading 165° and BZM VOR/DME R-050 direct HAPRI/ I-UKF 14.3 DME and hold, continue climb-in-hold to 5000.

AWOS-3 <b>126.625</b>	ATLANTA CENTER <b>125.15 263.0</b>	UNICOM <b>122.7 (CTAF)</b>
--------------------------	---------------------------------------	-------------------------------



BARRETT'S MOUNTAIN 113.75 BZM Chan 84 (Y)	ELEV 1303	TDZE 1276
--	-----------	-----------



CATEGORY	A	B	C	D
S-ILS 1	1476- $\frac{1}{2}$		200 (200- $\frac{1}{2}$ )	
S-LOC 1	1640- $\frac{1}{2}$	364 (400- $\frac{1}{2}$ )	1640- $\frac{5}{8}$	364 (400- $\frac{5}{8}$ )
CIRCLING	1800-1 497 (500-1)	1880-1 577 (600-1)	1880-1 $\frac{1}{2}$ 577 (600- $\frac{1}{2}$ )	2240-3 937 (1000-3)

SE-2, 26 DEC 2024 to 23 JAN 2025

SE-2, 26 DEC 2024 to 23 JAN 2025