

APP CRS	Rwy Idg	<b>5009</b>
<b>186°</b>	TDZE	<b>357</b>
	Apt Elev	<b>357</b>

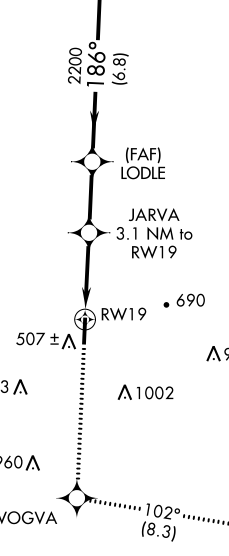
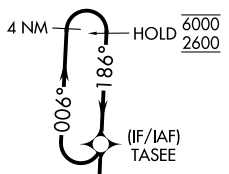
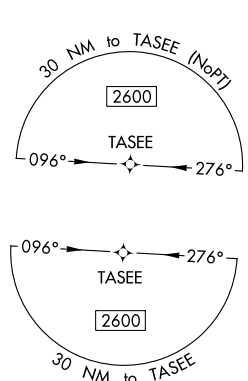
# RNAV (GPS) RWY 19

RICHARD ARTHUR FLD (M95)

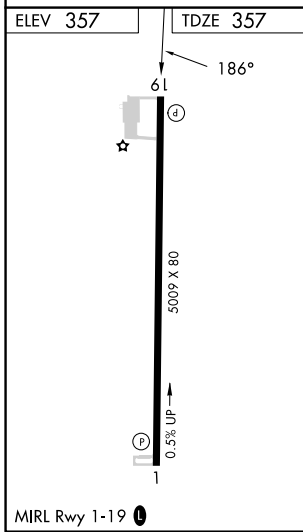
RNP APCH.  
 Procedure NA at night.  
 Rwy 19 helicopter visibility reduction below 1 SM NA.  
 Use Jasper altimeter setting.

MISSED APPROACH: Climb to 2600 direct WOGVA and on track 102° to BESOM and hold.

JFX AWOS-3PT <b>119.225</b>	COLUMBUS APP CON ★ <b>126.075 239.25</b>	UNICOM <b>122.8 (CTAF)</b>
--------------------------------	---	-------------------------------



A1167



2600	WOGVA	tr 102°	BESOM	Visual Segment - Obstacles.	4 NM Holding Pattern
				TASEE	
	RW19	JARVA 3.1 NM to RW19	LODLE	186°	006° → 6000
		1380	2200	← 186°	2600
	3.1 NM	2.6 NM	6.8 NM		
CATEGORY	A	B	C	D	
LNAV MDA	1080-1	723 (800-1)	1080-2	723 (800-2)	

SE-4, 26 DEC 2024 to 23 JAN 2025

SE-4, 26 DEC 2024 to 23 JAN 2025