

WAAS CH 82602 W34A	APP CRS 344°	Rwy Idg TDZE Apt Elev	8500 707 707
--	------------------------	-----------------------------	---

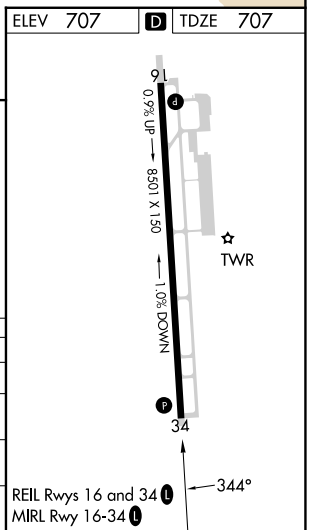
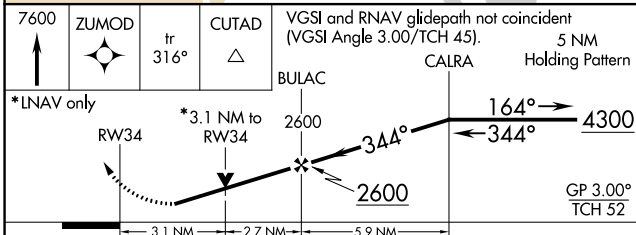
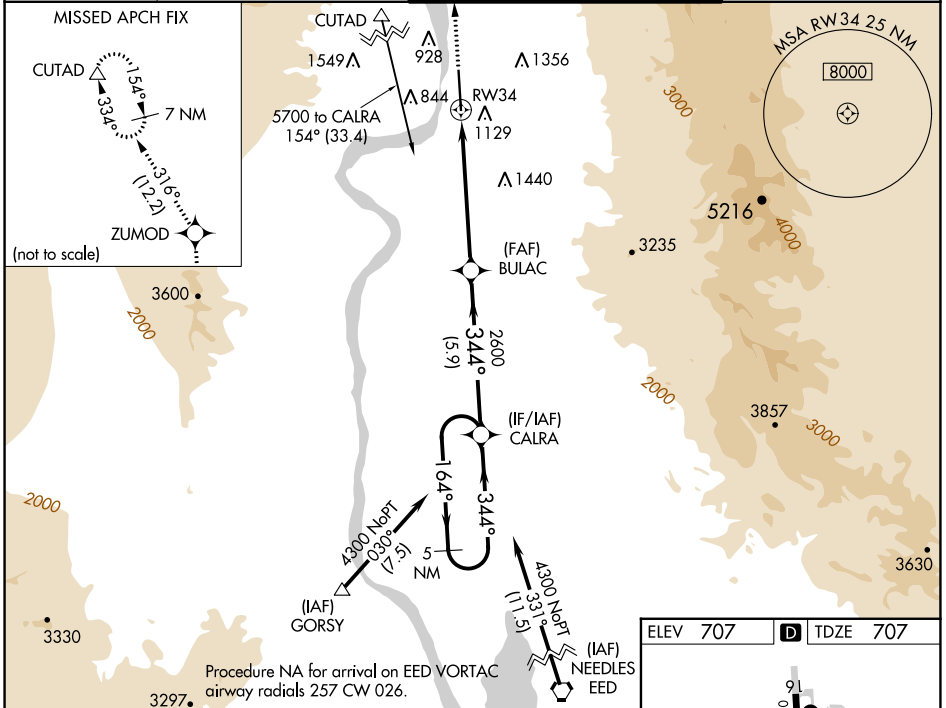
RNAV (GPS) RWY 34

LAUGHLIN/BULLHEAD INTL (IFP)

⚠ For uncompensated Baro-VNAV systems, LNAV/VNAV NA below -16°C (4°F) or above 54°C (130°F).
⚠ Rwy 34 helicopter visibility reduction below ¾ SM NA.
 DME/DME RNP-0.3 NA.
 Circling Rwy 16 NA at night.

MISSED APPROACH: Climb to 7600 direct ZUMOD and on track 316° to CUTAD and hold, continue climb-in-hold to 7600.

ATIS* 119.825	LOS ANGELES CENTER 134.65 360.65	BULLHEAD TOWER* 123.9 (CTAF) 0	GND CON 118.25
-------------------------	--	--	--------------------------



CATEGORY	A	B	C	D
LPV DA	1352-2½		645 (700-2½)	
LNAV/VNAV DA	1506-3		799 (800-3)	
LNAV MDA	1740-1¼ 1033 (1100-1¼)	1740-1½ 1033 (1100-1½)	1740-3	1033 (1100-3)
C CIRCLING	1740-1¼ 1033 (1100-1¼)	1740-1½ 1033 (1100-1½)	1800-3 1093 (1100-3)	2340-3 1633 (1700-3)