

LAS VEGAS, NEVADA

AL-6970 (FAA)

23334

LOC/DME I-HWG 110.7 Chan 44	APP CRS 120°	Rwy Idg TDZE Apt Elev	12L 4199 5000 2189 2205 2205 2205	12R 5000 2205
---	------------------------	-----------------------------	---	-----------------------------------

ILS or LOC RWY 12L

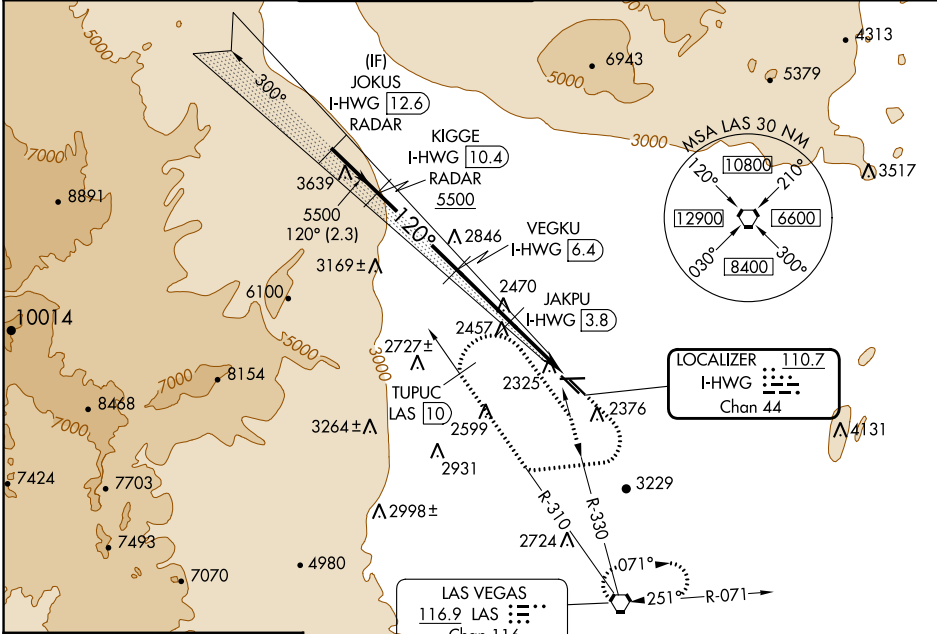
NORTH LAS VEGAS (VGT)

RADAR and DME required.

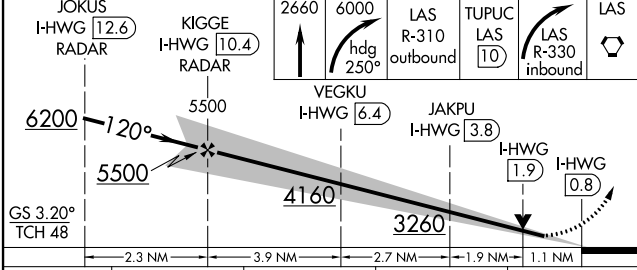
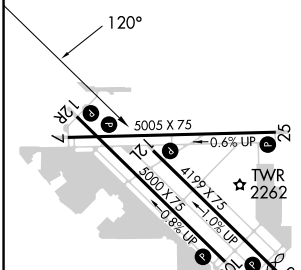
▼ Rwy 12L helicopter visibility reduction below 3/4 SM NA.

MISSED APPROACH: Climb to 2660 climbing right turn heading 250° to 6000, intercept LAS VORTAC R-310 outbound to TUPUC/LAS 10 DME then right turn on LAS VORTAC R-330 inbound to LAS VORTAC and hold.

ATIS 118.05	LAS VEGAS APP CON 119.4 360.85	NORTH LAS VEGAS TOWER* 125.7 (CTAF) 360.75	GND CON 121.7	CLNC DEL 124.0	UNICOM 122.95
-----------------------	--	--	-------------------------	--------------------------	-------------------------



ELEV 2205	D TDZE 12L 2189	TDZE 12R 2205
-----------	------------------------	---------------



CATEGORY	A	B	C	D
S-ILS 12L	2456-7/8	267 (300-7/8)		NA
S-LOC 12L	2620-1	431 (500-1)		NA
SIDESTEP 12R	2720-1 3/8	515 (600-1 3/8)		NA
<input checked="" type="checkbox"/> CIRCLING	2720-1	515 (600-1)		NA

REIL all Rws **1**
MIRL all Rws **1**

FAF to MAP 9.6 NM					
Knots	60	90	120	150	180
Min:Sec	9:36	6:24	4:48	3:50	3:12

LAS VEGAS, NEVADA
Amdt 1 14JUL22

36°13'N-115°12'W

NORTH LAS VEGAS (VGT)

ILS or LOC RWY 12L

SW-4, 26 DEC 2024 to 23 JAN 2025

SW-4, 26 DEC 2024 to 23 JAN 2025