

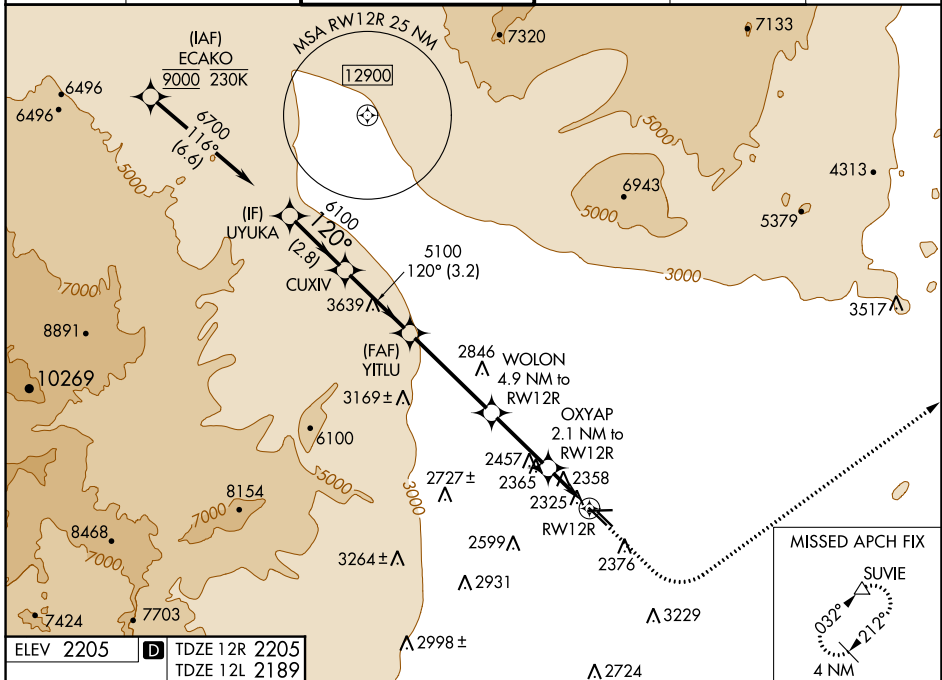
WAAS CH <b>69443</b> <b>W12A</b>	APP CRS <b>120°</b>	Rwy Idg TDZE Apt Elev	12R <b>5000</b> <b>2205</b> <b>2205</b>	12L <b>4199</b> <b>2189</b> <b>2205</b>
--	------------------------	-----------------------------	--	--

# RNAV (GPS) RWY 12R

NORTH LAS VEGAS (VGT)

RNP APCH - GPS.		MISSED APPROACH: Climb to 2900 then climbing left turn to 7500 direct SUVIE and hold, continue climb-in-hold to 7500.			
Rwy 12R helicopter visibility reduction below 3/4 SM NA.					

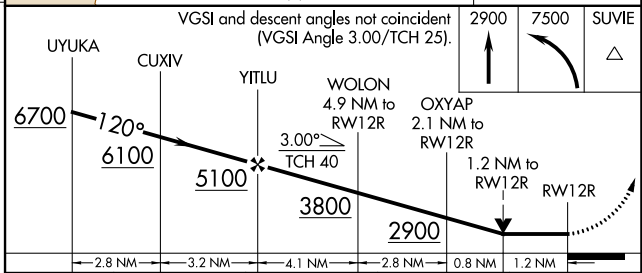
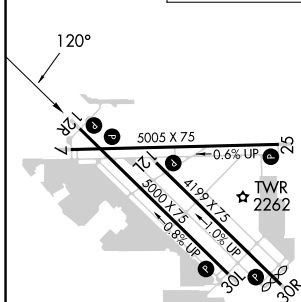
ATIS <b>118.05</b>	LAS VEGAS APP CON <b>119.4 360.85</b>	NORTH LAS VEGAS TOWER* <b>125.7 (CTAF) 360.75</b>	GND CON <b>121.7</b>	CLNC DEL <b>124.0</b>	UNICOM <b>122.95</b>
-----------------------	--	--	-------------------------	--------------------------	-------------------------



SW-4, 26 DEC 2024 to 23 JAN 2025

SW-4, 26 DEC 2024 to 23 JAN 2025

ELEV 2205	TDZE 12R 2205	TDZE 12L 2189
-----------	---------------	---------------



	A	B	C	D
LP MDA	2620-1	415 (500-1)	2620-1 $\frac{1}{8}$	415 (500-1 $\frac{1}{8}$ )
LNAV MDA	2820-1	615 (700-1)	2820-1 $\frac{3}{4}$	615 (700-1 $\frac{3}{4}$ )
SIDESTEP 12L	2820-1	631 (700-1)	2820-1 $\frac{3}{4}$ 631 (700-1 $\frac{3}{4}$ )	2820-2 631 (700-2)
CIRCLING	2820-1	615 (700-1)	2840-1 $\frac{3}{4}$ 635 (700-1 $\frac{3}{4}$ )	3540-3 1335 (1400-3)