

WAAS CH <b>42518</b> <b>W04A</b>	APP CRS <b>044°</b>	Rwy Idg TDZE Apt Elev	<b>5001</b> <b>877</b> <b>877</b>
--	------------------------	-----------------------------	---

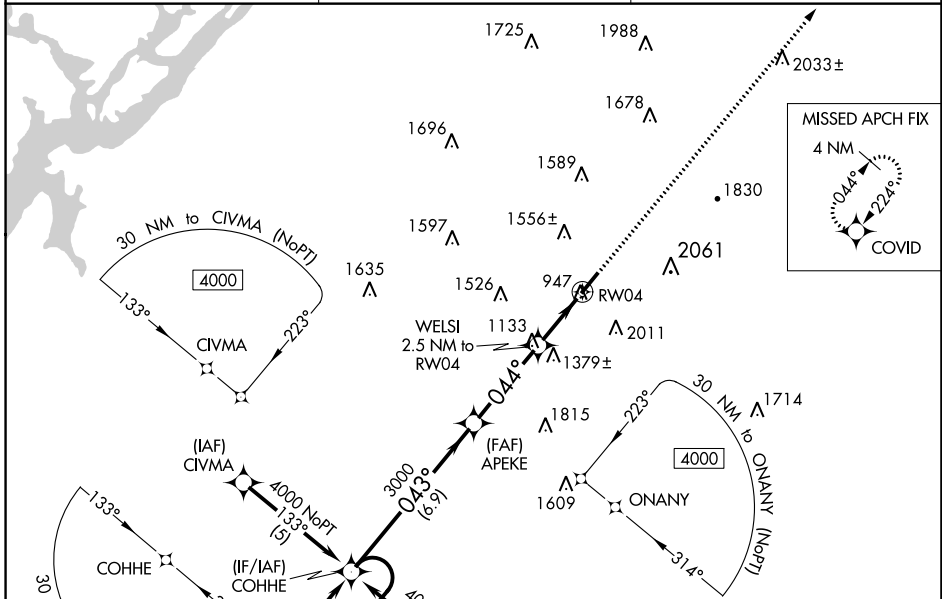
# RNAV (GPS) RWY 4

ISBELL FLD (4A.9)

**⚠** Circling NA southeast of Rwy 4-22. DME/DME RNP-0.3 NA. Helicopter visibility reduction below ¼ SM NA. When local altimeter setting not received, use Rome altimeter setting and increase all DAs/MDAs 100 feet, increase LPV all Cats visibility ½ SM and LNAV Cat C and Circling Cat A visibility ¼ SM.

**⚠** MISSED APPROACH: Climb to 4000 direct COVID and hold.

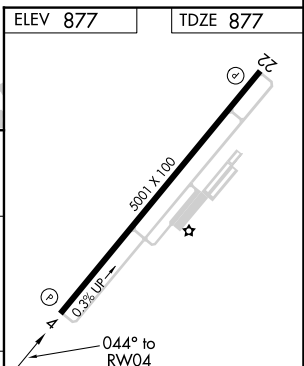
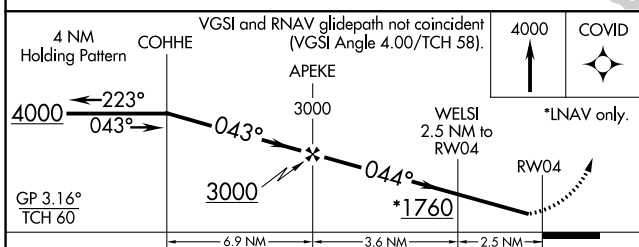
AWOS-3PT <b>119.025</b>	ATLANTA CENTER <b>124.5 270.325</b>	UNICOM <b>122.8 (CTAF) 0</b>
----------------------------	--	---------------------------------



SE-4, 26 DEC 2024 to 23 JAN 2025

SE-4, 26 DEC 2024 to 23 JAN 2025

ELEV 877	TDZE 877
----------	----------



CATEGORY	A	B	C	D
LPV DA	1234-1¼ 357 (400-1¼)			NA
LNAV MDA	1620-1 743 (800-1)	1620-1¼ 743 (800-1¼)	1620-2¼ 743 (800-2¼)	NA
CIRCLING	1620-1 743 (800-1)	1920-1½ 1043 (1100-1½)	1920-3 1043 (1100-3)	NA

MIRL Rwy 4-22 0  
REIL Rwy 4 and 22 0