

|             |          |             |
|-------------|----------|-------------|
| APP CRS     | Rwy Idg  | <b>5001</b> |
| <b>214°</b> | TDZE     | <b>877</b>  |
|             | Apt Elev | <b>877</b>  |

# RNAV (GPS) Y RWY 22

ISBELL FLD (4A9)

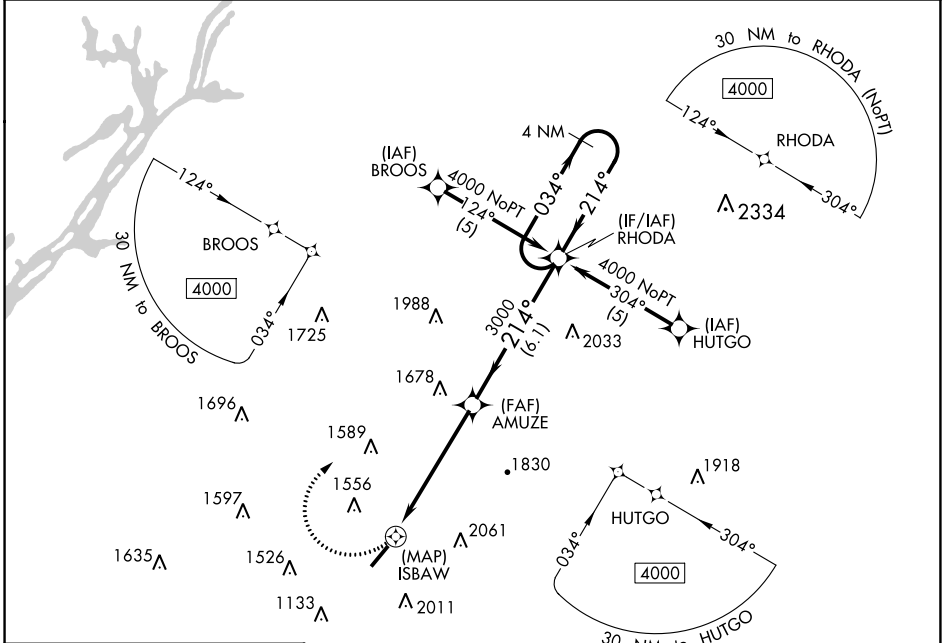
**⚠** Circling NA southeast of Rwy 4-22. DME/DME RNP-0.3 NA. Helicopter visibility reduction below  $\frac{3}{4}$  SM NA. When local altimeter setting not received, use Rome altimeter setting and increase all MDAs 100 feet, increase LNAV Cat A/C/D and Circling Cat A visibility  $\frac{1}{2}$  SM.

**MISSED APPROACH:**  
Climbing right turn to 4000 direct RHODA and hold.

AWOS-3PT  
**119.025**

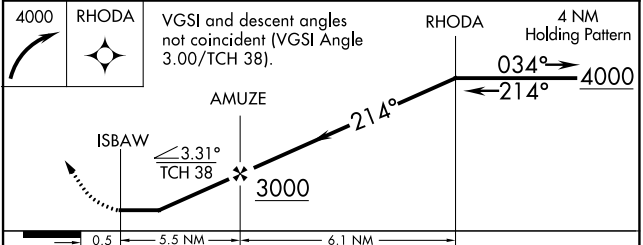
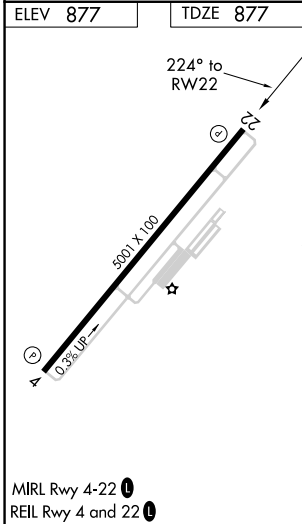
ATLANTA CENTER  
**124.5 270.325**

UNICOM  
**122.8** (CTAF) **0**



SE-4, 26 DEC 2024 to 23 JAN 2025

SE-4, 26 DEC 2024 to 23 JAN 2025



| CATEGORY | A                     | B  | C  | D  |
|----------|-----------------------|--|--|--|
| LNAV MDA | 1700-1<br>823 (900-1) | 1700-1 $\frac{1}{4}$<br>823 (900-1 $\frac{1}{4}$ )   | 1700-2 $\frac{1}{2}$<br>823 (900-2 $\frac{1}{2}$ ) | 1700-2 $\frac{3}{4}$<br>823 (900-2 $\frac{3}{4}$ ) |
| CIRCLING | 1700-1<br>823 (900-1) | 1920-1 $\frac{1}{2}$<br>1043 (1100-1 $\frac{1}{2}$ ) | 1920-3<br>1043 (1100-3)                            | 1940-3<br>1063 (1100-3)                            |