

WAAS CH <b>72823</b> <b>W36A</b>	APP CRS <b>359°</b>	Rwy Idg TDZE Apt Elev	<b>4001</b> <b>1115</b> <b>1115</b>
--	------------------------	-----------------------------	---

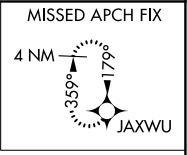
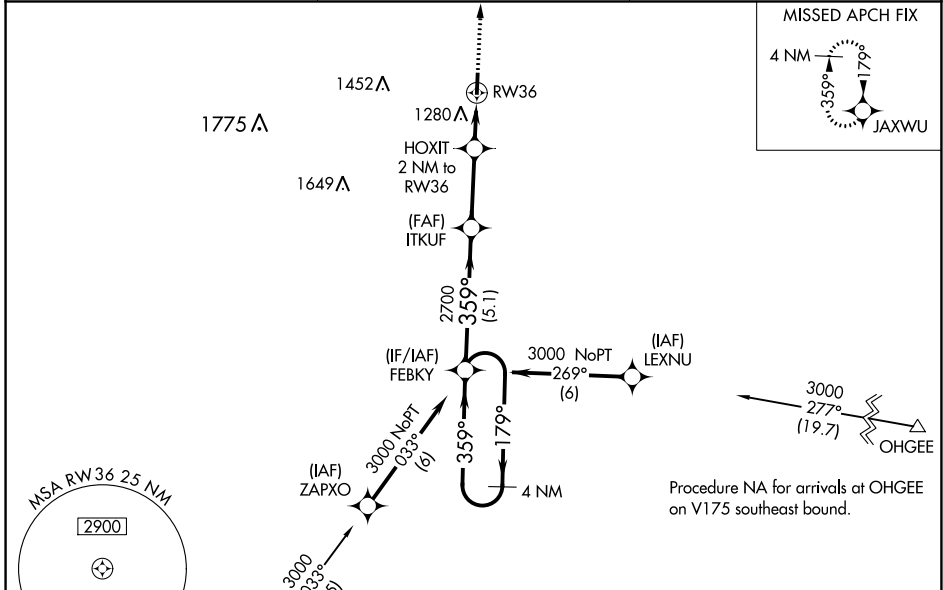
# RNAV (GPS) RWY 36

OSCEOLA MUNI (I75)

**⚠** When VGSI inop, Circling Rwy 18 NA at night. Baro-VNAV NA when using Chariton altimeter setting. For uncompensated Baro-VNAV systems, LNAV/VNAV NA below -17°C (2°F) or above 54°C (130°F). DME/DME RNP-0.3 NA. VDP NA with Chariton altimeter setting. When local altimeter setting not received, use Chariton altimeter setting and increase all DA 44 feet and all MDA 60 feet. Increase LPV all Cats visibility to 1 mile and LNAV/VNAV all Cats visibility to 1 ¼ mile. Visibility reduction by helicopters NA.

**MISSED APPROACH:**  
Climb to 3000 direct JAXWU and hold.

AWOS-3 <b>120.975</b>	DES MOINES APP CON <b>123.9 360.7</b>	UNICOM <b>122.8 (CTAF) 0</b>
--------------------------	--	---------------------------------



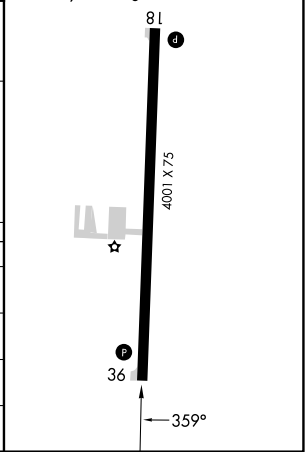
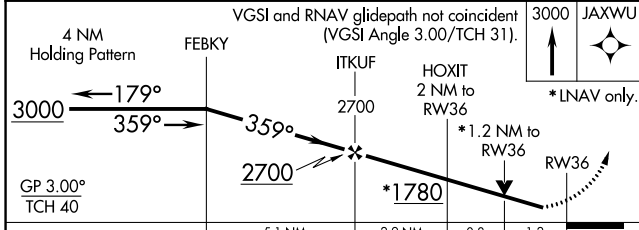
MSA RW36 2.5 NM  
2900

LAMONI LMN

Procedure NA for arrivals on LMN VOR/DME airway radials 009 CW 106.

Procedure NA for arrivals at OHGEE on V175 southeast bound.

ELEV 1115	TDZE 1115
REIL Rwy 18 and 36	MIRL Rwy 18-36



CATEGORY	A	B	C	D
LPV DA	1365-7/8	250 (300-7/8)		NA
LNAV/VNAV DA	1423-1	308 (400-1)		NA
LNAV MDA	1540-1	425 (500-1)		NA
CIRCLING	1580-1	465 (500-1)		NA

NC-3, 26 DEC 2024 to 23 JAN 2025

NC-3, 26 DEC 2024 to 23 JAN 2025