

WAAS CH <b>72629</b> <b>W18A</b>	APP CRS <b>182°</b>	Rwy Idg TDZE <b>1305</b> Apt Elev <b>1305</b>	<b>5012</b>
--	------------------------	---	-------------

# RNAV (GPS) RWY 18

HAMILTON MUNI (MNZ)

RNP APCH-GPS.

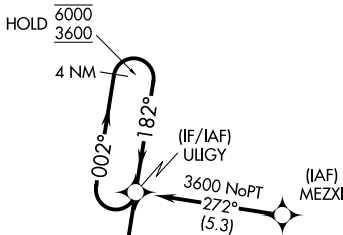
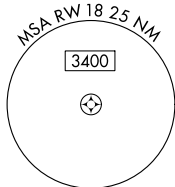
▼ Rwy 18 helicopter visibility reduction below ¼ SM NA.  
For uncompensated Baro-VNAV systems, LNAV/VNAV NA below -17°C or above 54°C.

MISSED APPROACH: Climb to 3100 direct USXEL and hold.

AWOS-3PT  
**118.525**

GRAY APP CON  
**120.075 323.15**

UNICOM  
**122.7 (CTAF) 0**



Procedure NA for arrivals at BUILT on V161 southbound.

Procedure NA for arrivals at SONET on V358 northeast bound.

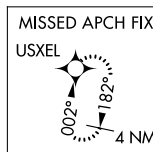
1760  $\Delta$

BUILT  $\Delta$

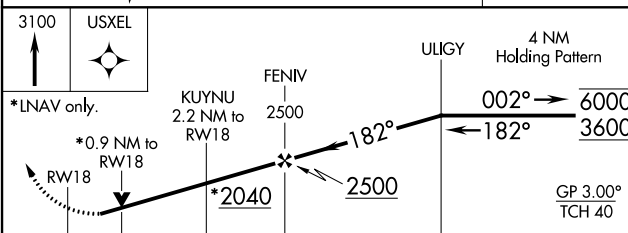
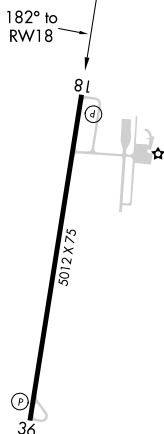
1386  $\Delta$

RW18  $\Delta$

1528  $\Delta$



ELEV 1305 TDZE 1305



CATEGORY	A	B	C	D
LPV DA		1555-1	250 (300-1)	NA
LNAV/VNAV DA		1555-1	250 (300-1)	NA
LNAV MDA		1640-1	335 (400-1)	NA
CIRCLING	1680-1 375 (400-1)	1840-1 535 (600-1)	1960-1¾ 655 (700-1¾)	NA

MIRL Rwy 18-36 0