

APP CRS 281°	Rwy Idg 3705
	TDZE 686
	Apt Elev 686

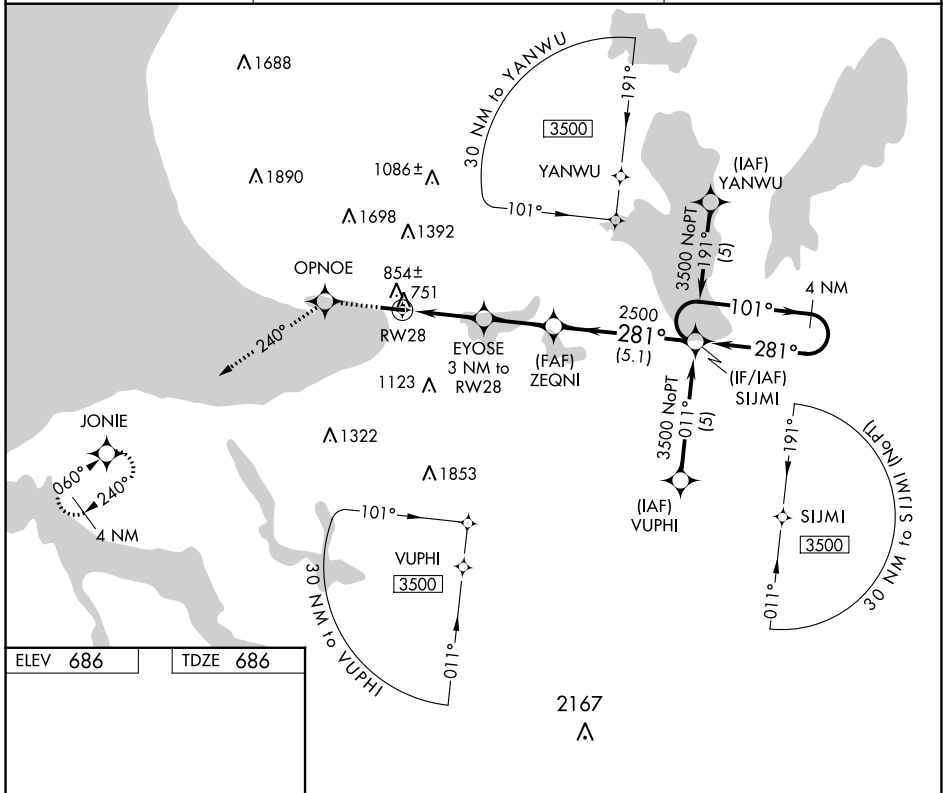
RNAV (GPS) RWY 28

HARBOR SPRINGS (MGN)

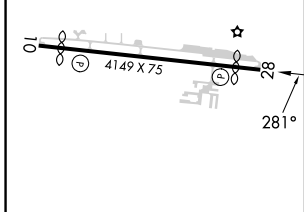
⚠ DME/DME RNP-0.3 NA. Helicopter visibility reduction below 1 SM NA. When local altimeter setting not received, use Pellsion altimeter setting and increase all MDAs 40 feet. Procedure NA at night.

MISSED APPROACH: Climb to 3400 direct OPNOE and via 240° track to JONIE and hold.

AWOS-3P 119.925	MINNEAPOLIS CENTER 134.6 354.05	UNICOM 122.8 (CTAF) 0
---------------------------	---	--



ELEV 686	TDZE 686
----------	----------



3400 OPNOE JONIE VGSI and descent angles not coincident (VGSI Angle 4.00/TCH 35).

4 NM Holding Pattern

SIJMI 3500

EYOSE 3 NM to RW28

ZEQNI 281° 2500

RW28 1680 TCH 35

3 NM 2.5 NM 5.1 NM

CATEGORY	A	B	C	D
LNAV MDA	1120-1	434 (500-1)	NA	
CIRCLING	1380-1 694 (700-1)	1500-1¼ 814 (900-1¼)	NA	

EC-1, 26 DEC 2024 to 23 JAN 2025

EC-1, 26 DEC 2024 to 23 JAN 2025