

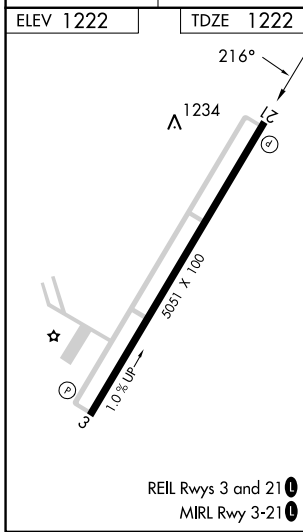
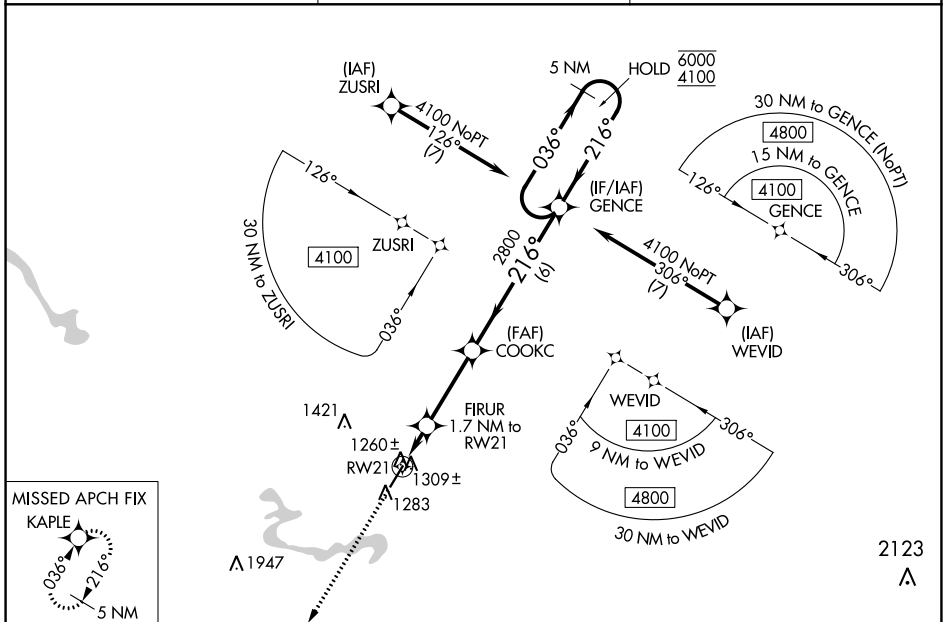
WAAS CH 77801 W21A	APP CRS 216°	Rwy Idg TDZE 1222 Apt Elev 1222	5051
--	------------------------	---	-------------

RNAV (GPS) RWY 21

BIG SANDY RGNL (SJS)

RNP APCH - GPS.	MISSED APPROACH: Climb to 4300 direct KAPLE and hold.
-----------------	---

AWOS-3 120.175	HUNTINGTON APP CON 119.75 270.1	UNICOM 123.05 (CTAF)
--------------------------	---	--------------------------------



ELEV 1222	TDZE 1222	4300 KAPLE	VGSI and RNAV glidepath not coincident (VGSI Angle 3.00/TCH 25).	5 NM Holding Pattern
		<p>GENCE</p> <p>COOKC</p> <p>FIRUR 1.7 NM to RWY 21</p> <p>RWY 21</p> <p>GP 3.00° TCH 40</p>		
CATEGORY	A	B	C	D
LPV DA		1472-3/4	250 (300-3/4)	
LNAV/VNAV DA		1520-7/8	298 (300-7/8)	
LNAV MDA		1560-1	338 (400-1)	
C CIRCLING	1740-1	518 (600-1)	1920-2 698 (700-2)	2020-2 1/2 798 (800-2 1/2)

SE-1, 26 DEC 2024 to 23 JAN 2025

SE-1, 26 DEC 2024 to 23 JAN 2025