

|                        |                         |
|------------------------|-------------------------|
| APP CRS<br><b>142°</b> | Rwy Idg<br><b>3498</b>  |
|                        | TDZE<br><b>1610</b>     |
|                        | Apt Elev<br><b>1610</b> |

# RNAV (GPS) RWY 14

MANITOWISH WATERS (D25)

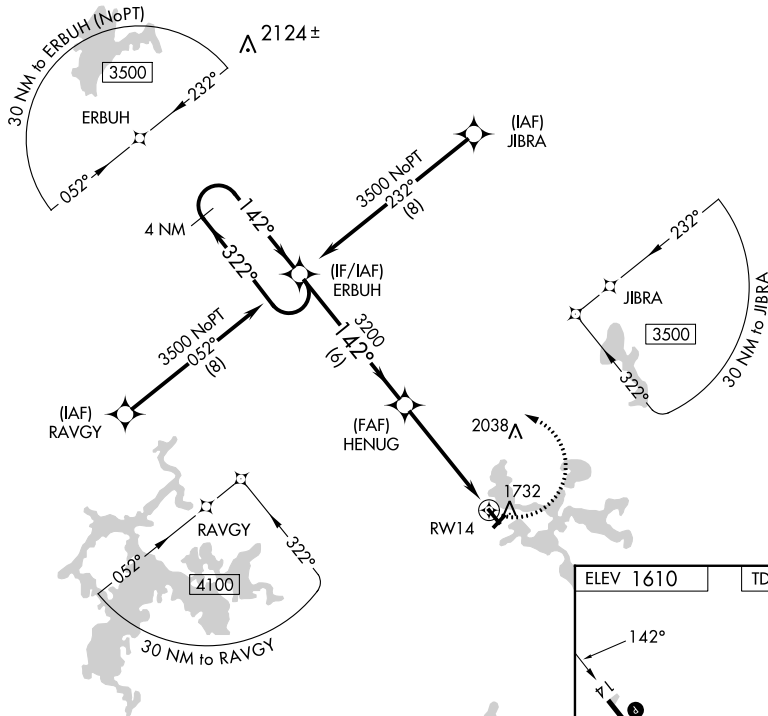
**▼** Circling NA to Rws 4 and 22. DME/DME RNP-0.3 NA. Procedure NA at night. Rwy 14 helicopter visibility reduction below 1 SM NA. When local altimeter setting not received, use Minocqua-Woodruff altimeter setting; increase all MDA 40 feet, increase LNAV Cat C visibility 1/8 mile and Circling Cat C visibility 1/4 mile.

**MISSED APPROACH:**  
Climbing left turn to 3500  
direct ERBUH and hold.

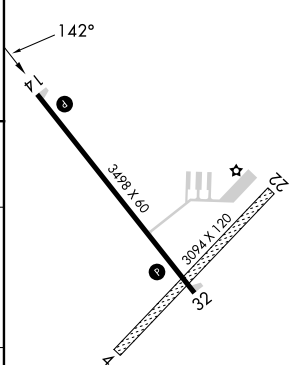
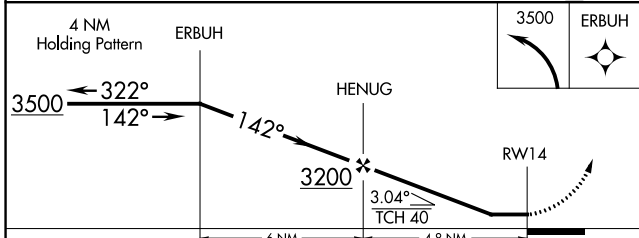
AWOS-3PT  
**118.175**

MINNEAPOLIS CENTER  
**133.65 281.5**

UNICOM  
**122.8 (CTAF) ①**



|           |           |
|-----------|-----------|
| ELEV 1610 | TDZE 1610 |
|-----------|-----------|



| CATEGORY          | A      | B           | C                             | D  |
|-------------------|--------|-------------|-------------------------------|----|
| LNAV MDA          | 2100-1 | 490 (500-1) | 2100-1 3/8<br>490 (500-1 3/8) | NA |
| <b>C</b> CIRCLING | 2100-1 | 490 (500-1) | 2340-2<br>730 (800-2)         | NA |

REIL Rws 14 and 32 ①  
MIRL Rwy 14-32 ①