

APP CRS	Rwy Idg	<b>3498</b>
<b>322°</b>	TDZE	<b>1610</b>
	Apt Elev	<b>1610</b>

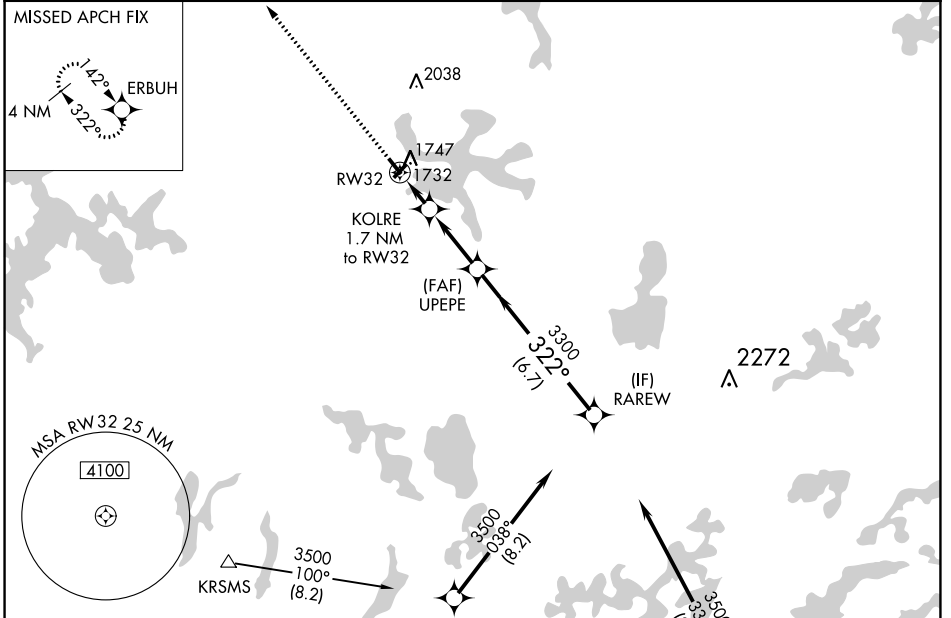
# RNAV (GPS) RWY 32

MANITOWISH WATERS (D25)

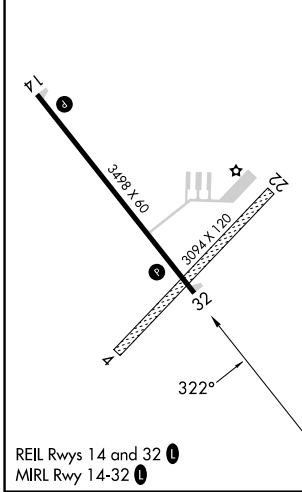
**⚠** Circling NA to Rws 4 and 22. DME/DME RNP-0.3 NA. Procedure NA at night. Rwy 32 helicopter visibility reduction below 1 SM NA. When local altimeter setting not received, use Minocqua-Woodruff altimeter setting and increase all MDA 40 feet and LNAV Cat C visibility 1/8 mile and Circling Cat C visibility 1/4 mile.

**MISSED APPROACH:** Climb to 3500 direct ERBUH and hold.

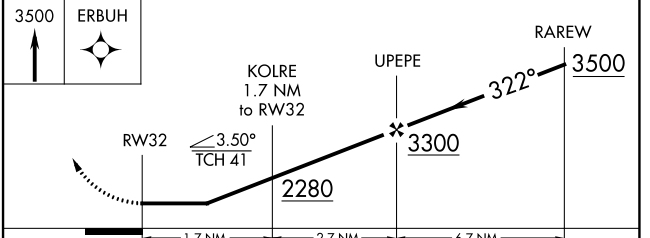
<b>AWOS-3PT</b> <b>118.175</b>	<b>MINNEAPOLIS CENTER</b> <b>133.65 281.5</b>	<b>UNICOM</b> <b>122.8 (CTAF)</b> <b>📻</b>
-----------------------------------	--	---



ELEV 1610	TDZE 1610
-----------	-----------



Procedure NA for arrival on RHI VOR/DME airway radials 241 CW 021.



CATEGORY	A	B	C	D
LNAV MDA	2000-1	390 (400-1)	2000-1 1/8 390 (400-1 1/8)	NA
<b>📻</b> CIRCLING	2060-1	450 (500-1)	2340-2 730 (800-2)	NA

EC-3, 26 DEC 2024 to 23 JAN 2025

EC-3, 26 DEC 2024 to 23 JAN 2025