

APP CRS	Rwy Idg	2721
001°	TDZE	919
	Apt Elev	919

RNAV (GPS) RWY 36

NECEDAH (DAF)

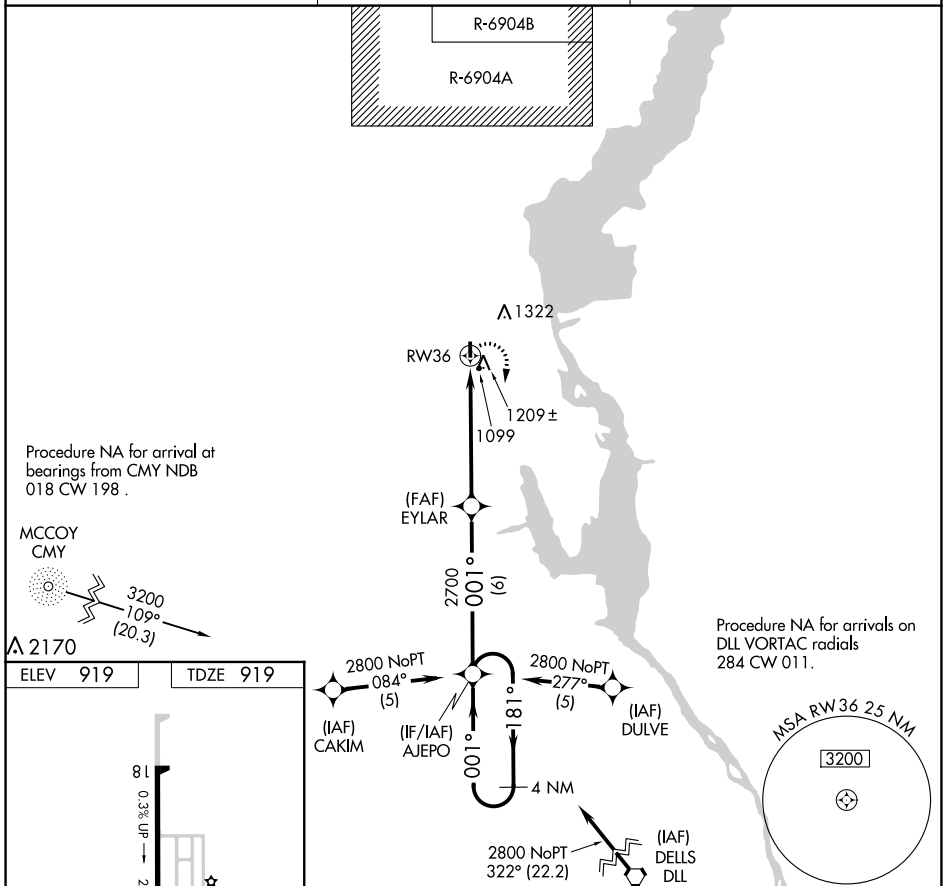
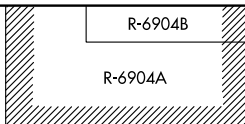
⚠ Rwy 36 helicopter visibility reduction below 1 SM NA.
⚠ DME/DME-0.3 NA. Procedure NA at night. Use Wisconsin Rapids altimeter setting.

MISSED APPROACH: Climbing right turn to 2800 direct AJEPO and hold.

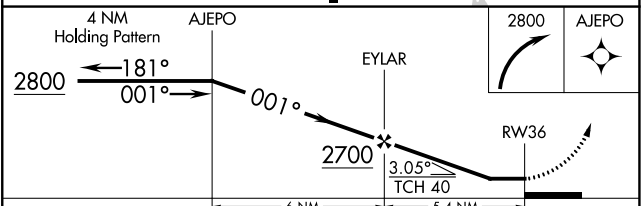
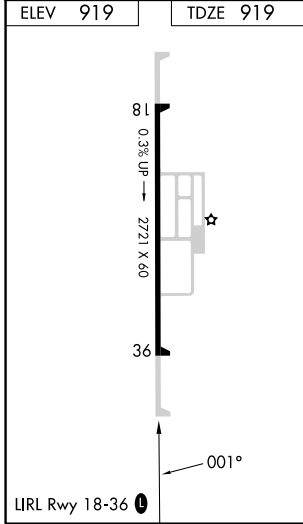
ISW ASOS
126.575

VOLK APP CON ★
135.25 244.875

UNICOM
122.7 (CTAF) 0



ELEV 919	TDZE 919
----------	----------



CATEGORY	A	B	C	D
LNAV MDA	1540-1	621 (700-1)		NA
CIRCLING	1580-1 661 (700-1)	1700-1 781 (800-1)		NA

EC-3, 26 DEC 2024 to 23 JAN 2025

EC-3, 26 DEC 2024 to 23 JAN 2025