

VORTAC MSN 108.6 Chan 23	APP CRS 106°	Rwy Idg TDZE Apt Elev 920	N/A N/A 920
---------------------------------------	------------------------	--	-------------------

VOR or GPS-A
BLACKHAWK AIRFIELD (87Y)

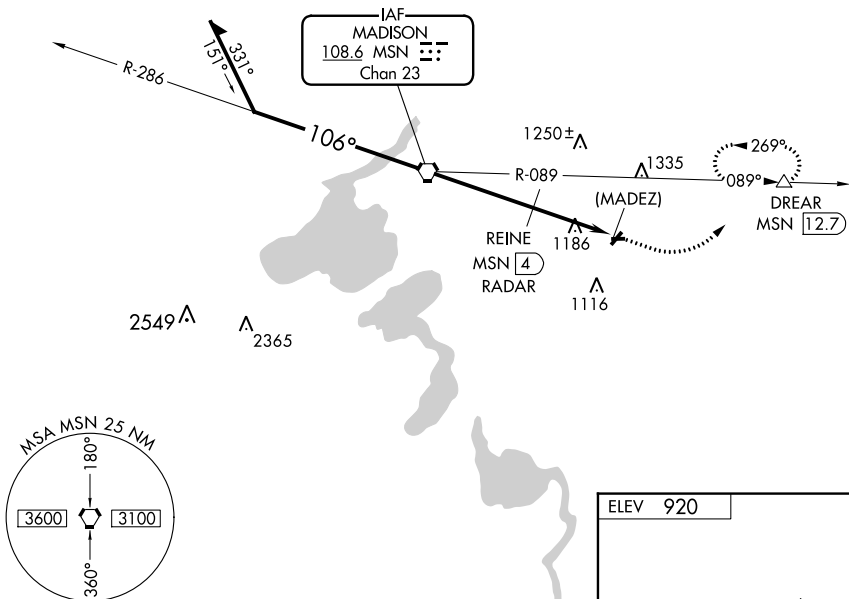
NA Use Dane County Rgnl-Truax Fld altimeter setting. DME required.

MISSED APPROACH: Climb to 2000 then climbing left turn to 3500 via heading 045° and MSN R-089 to DREAR/MSN 12.7 DME and hold.

MADISON APP CON* **120.1 343.7**

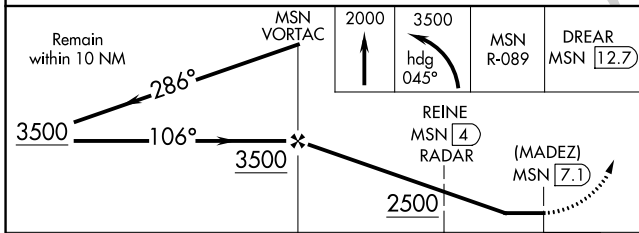
UNICOM **122.7 (CTAF)**

NoPT for arrivals on MSN VORTAC radials 231 CW 351.



EC-3, 26 DEC 2024 to 23 JAN 2025

EC-3, 26 DEC 2024 to 23 JAN 2025



ELEV 920
Diagram showing radial R-089 (106°) and DME arcs (2203 X 56, 2814 X 57).
LIRL Rwy 9-27
FAF to MAP 7.1 NM
Knots: 60, 90, 120, 150, 180
Min:Sec: 7:06, 4:44, 3:33, 2:50, 2:22

CATEGORY	A	B	C	D
CIRCLING	2500-1¼ 1580 (1600-1¼)	2500-1½ 1580 (1600-1½)	NA	NA
REINE FIX MINIMUMS				
CIRCLING	1520-1 600 (600-1)	1560-1 640 (700-1)	NA	NA