

WAAS CH <b>93924</b> <b>W36A</b>	APP CRS <b>005°</b>	Rwy Idg <b>3499</b> TDZE <b>246</b> Apt Elev <b>247</b>
--	------------------------	---

# RNAV (GPS) RWY 36

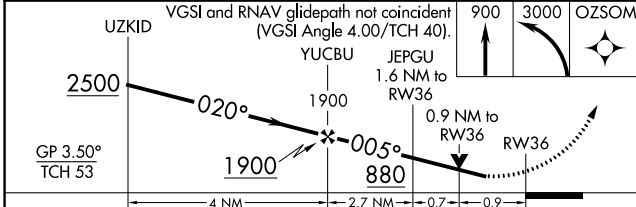
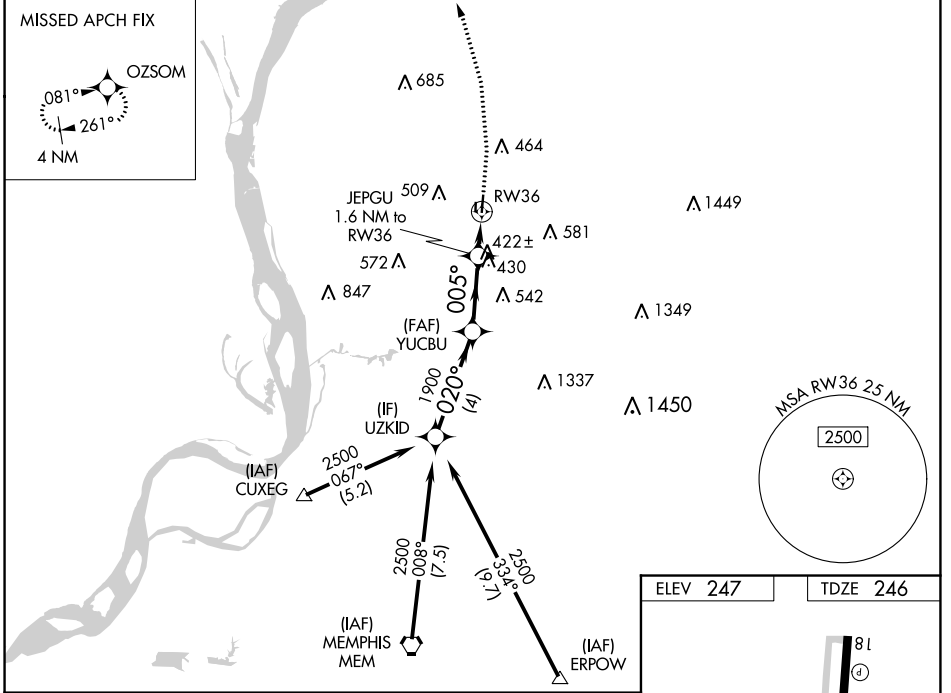
CHARLES W BAKER (2M8)

RNP APCH - GPS.

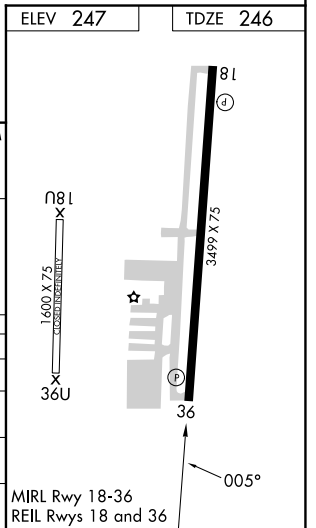
**⚠** Baro-VNAV and VDP NA when using Millington/Memphis altimeter setting. For uncompensated Baro-VNAV systems, LNAV/VNAV NA below -15°C or above 54°C. Rwy 36 helicopter visibility reduction below 3/4 SM NA. Circling Rwy 18 NA at night. When local altimeter setting not received, use Millington/Memphis altimeter setting: increase LPV DA to 643 feet and all visibilities 1/8 SM; increase LNAV/VNAV DA to 707 feet and all visibilities 1/8 SM; increase all MDAs 40 feet and LNAV visibility Cat C 1/8 SM, and Circling visibility Cat C 1/4 SM.

**MISSED APPROACH:** Climb to 900 then climbing left turn to 3000 direct OZSOM and hold, continue climb-in-hold to 3000.

AWOS-3PT <b>119.575</b>	MEMPHIS APP CON <b>125.8 338.3</b>	UNICOM <b>122.8</b> (CTAF)
----------------------------	---------------------------------------	-------------------------------



CATEGORY	A	B	C	D
LPV DA	619-1	373 (400-1)		NA
LNAV/VNAV DA	683-1 1/4	437 (500-1 1/4)		NA
LNAV MDA	680-1	434 (500-1)	680-1 1/4 434 (500-1 1/4)	NA
<b>C</b> CIRCLING	760-1 513 (600-1)	860-1 613 (700-1)	900-1 1/4 653 (700-1 1/4)	NA



SE-1, 26 DEC 2024 to 23 JAN 2025

SE-1, 26 DEC 2024 to 23 JAN 2025