

RNAV (GPS) RWY 13

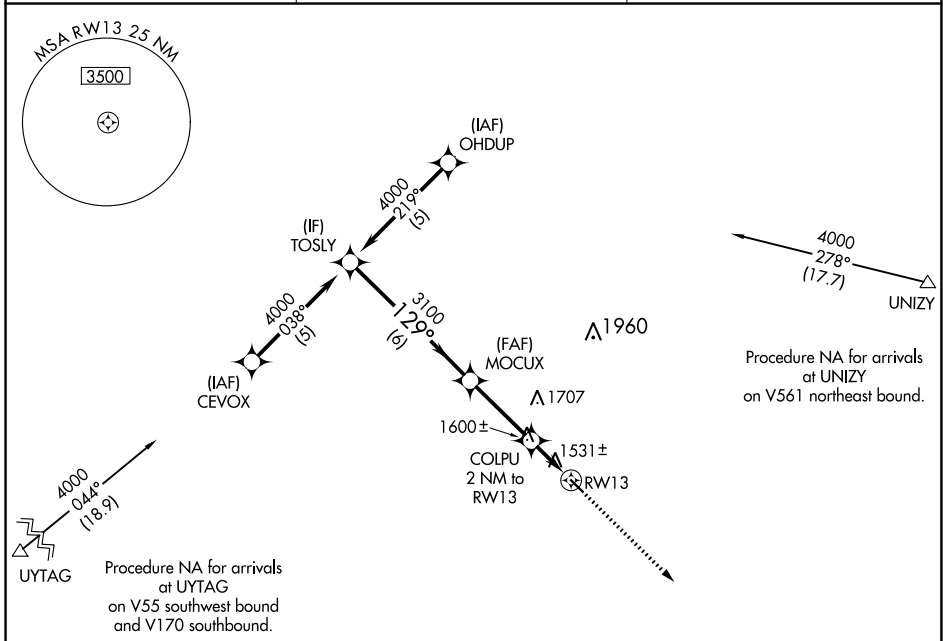
COOPERSTOWN MUNI (S32)

APP CRS 129°	Rwy Idg TDZE Apt Elev	3500 1424 1424
------------------------	-----------------------------	---

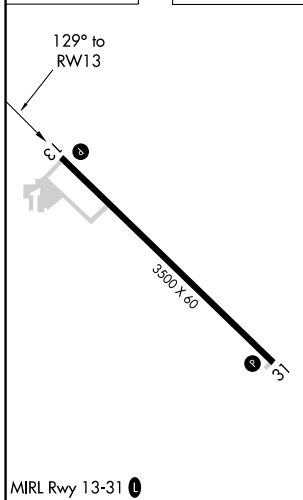
NA DME/DME RNP-0.3 NA. Visibility reduction by helicopters NA. When local altimeter setting not received, use Jamestown altimeter setting and increase all MDA 100 feet and increase LNAV Cat C visibility 1/4 mile.

MISSED APPROACH: Climb to 3100 direct RAKGU and hold.

AWOS-3 118.75	MINNEAPOLIS CENTER 132.15 269.6	CTAF 122.9
-------------------------	---	----------------------



ELEV 1424	TDZE 1424
-----------	-----------



TOSLY				VGSI and descent angles not coincident (VGSI Angle 3.00/TCH 25).				3100	RAKGU
4000				129°					
Procedure Turn NA				3100				COLPU 2 NM to RW13	
				3.04° TCH 40				RW13	
				2100					
				6 NM		3.1 NM		2 NM	
CATEGORY	A	B	C	D					
LNAV MDA	1860-1	436 (500-1)	1860-1¼ 436 (500-1¼)	NA					
CIRCLING	1880-1	456 (500-1)	1880-1½ 456 (500-1½)	NA					

NC-1, 26 DEC 2024 to 23 JAN 2025

NC-1, 26 DEC 2024 to 23 JAN 2025