

RNAV (GPS) RWY 30

CROSBY MUNI (D50)

| | |
|------------------------|-------------------------|
| APP CRS 304° | Rwy Idg 3800 |
| | TDZE 1948 |
| | Apt Elev 1950 |

RNP APCH

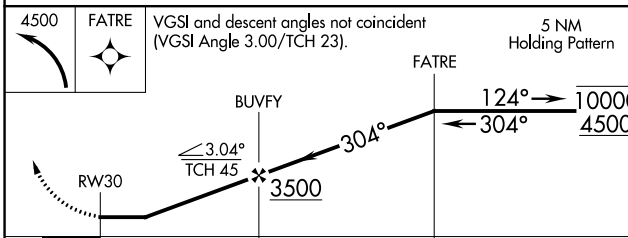
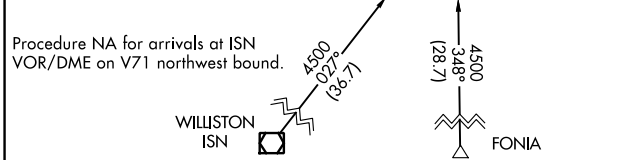
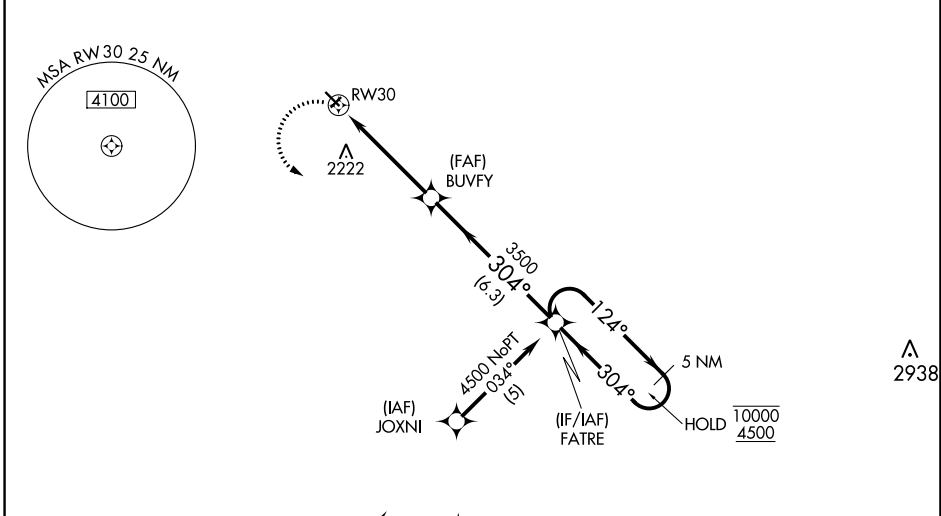
▼ Circling NA to Rwys 3 and 21. Circling Rwy 12 NA at night.
 ▲ Rwy 30 helicopter visibility reduction below 1 SM NA.

MISSED APPROACH: Climbing left turn to 4500 direct FATRE and hold.

AWOS-3
118.025

SALT LAKE CITY CENTER
126.85 305.2

CTAF
122.9 0



| CATEGORY | A | B | C | D |
|------------|--------|-------------|--|--|
| LNVA MDA | 2560-1 | 612 (700-1) | 2560-1 ³ / ₄ 612 (700-1 ³ / ₄) | 2560-2 612 (700-2) |
| ◻ CIRCLING | 2560-1 | 610 (700-1) | 2560-1 ³ / ₄ 610 (700-1 ³ / ₄) | 2640-2 ¹ / ₄ 690 (700-2 ¹ / ₄) |

