

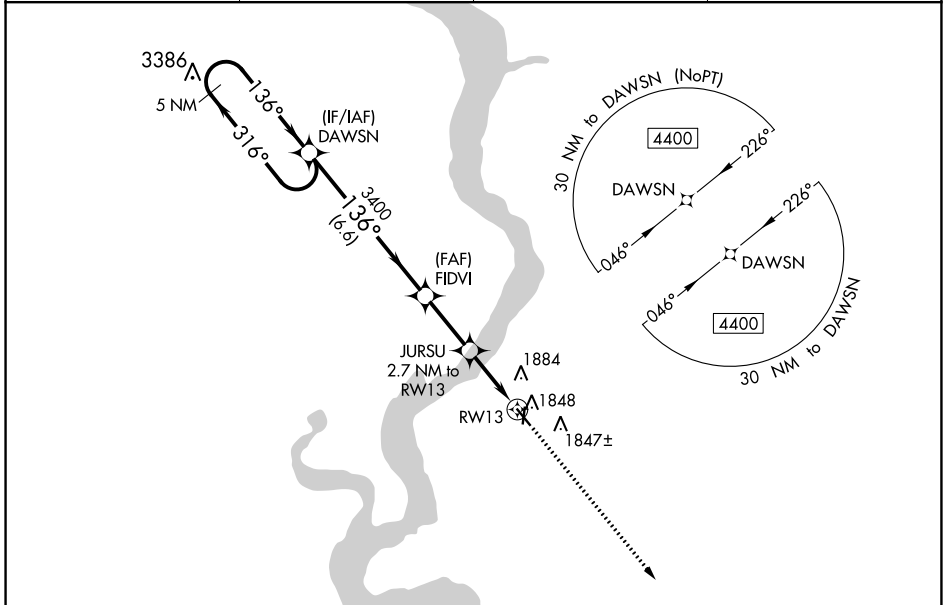
WAAS CH <b>42841</b> <b>W13A</b>	APP CRS <b>136°</b>	Rwy Idg TDZE Apt Elev	<b>4299</b> <b>1696</b> <b>1696</b>
--	------------------------	-----------------------------	---

# RNAV (GPS) RWY 13

CHAMBERLAIN MUNI (9V9)

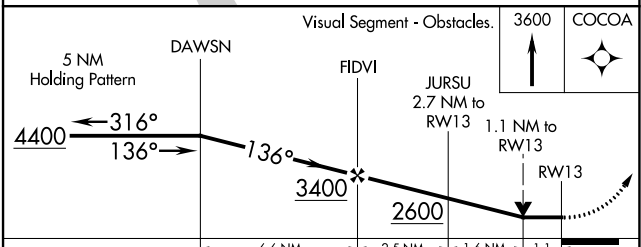
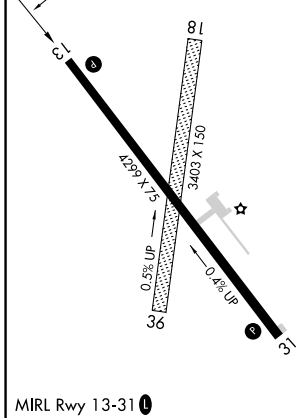
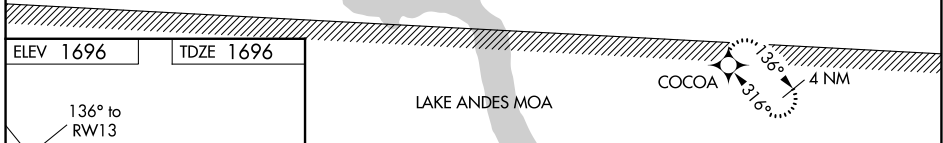
<b>▽</b> DME/DME RNP-0.3 NA. Rwy 13 helicopter visibility reduction below ¾ SM NA. Circling NA to Rwy 18 and 36.	MISSED APPROACH: Climb to 3600 direct COCOA and hold.
--	---

AWOS-3P <b>118.025</b>	MINNEAPOLIS CENTER <b>125.1 269.1</b>	GCO <b>121.725</b>	UNICOM <b>122.8 (CTAF)</b>
---------------------------	--	-----------------------	-------------------------------



NC-1, 26 DEC 2024 to 23 JAN 2025

NC-1, 26 DEC 2024 to 23 JAN 2025



CATEGORY	A	B	C	D
LP MDA	2080-1	384 (400-1)	2080-1½ 384 (400-1½)	NA
LNAV MDA	2100-1	404 (500-1)	2100-1½ 404 (500-1½)	NA
<b>☐</b> CIRCLING	2200-1	504 (600-1)	2200-1½ 504 (600-1½)	NA