

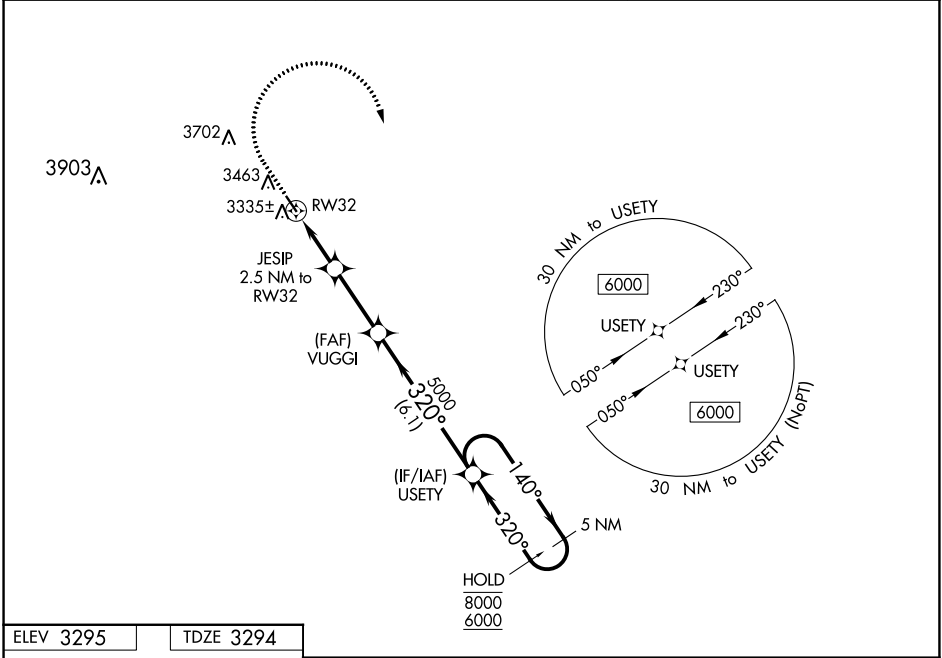
WAAS CH 77540 W32A	APP CRS 320°	Rwy Idg 3699 TDZE 3294 Apt Elev 3295
--	------------------------	---

RNAV (GPS) RWY 32

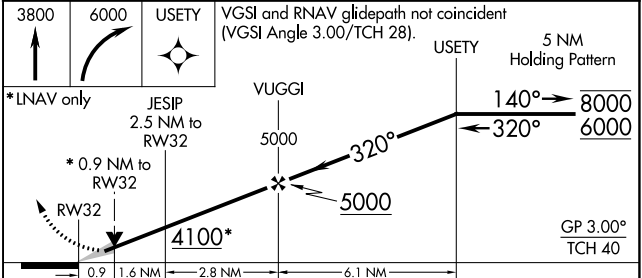
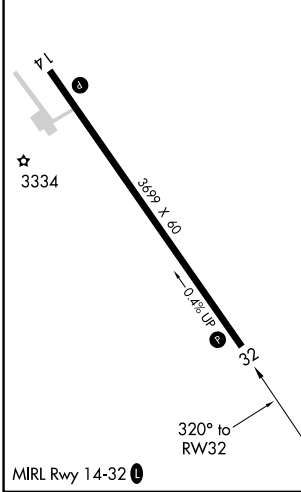
MARTIN MUNI (9V6)

RNP APCH. ▼ ▲ NA	MISSED APPROACH: Climb to 3800 then climbing right turn to 6000 direct USETY and hold.
------------------------	--

AWOS-2 123.0	DENVER CENTER 127.95 338.2	CTAF 122.9 ①
------------------------	--------------------------------------	------------------------



ELEV 3295	TDZE 3294
------------------	------------------



CATEGORY	A	B	C	D
LPV DA	3544-1 250 (300-1)			NA
LNAV/VNAV DA	3544-1 250 (300-1)			NA
LNAV MDA	3600-1 306 (400-1)			NA
<input checked="" type="checkbox"/> CIRCLING	3780-1 485 (500-1)	3820-1 525 (600-1)	4060-2½ 765 (800-2½)	NA

NC-1, 26 DEC 2024 to 23 JAN 2025

NC-1, 26 DEC 2024 to 23 JAN 2025