

VOR/DME BAE 116.4 Chan 111	APP CRS 247°	Rwy Idg TDZE Apt Elev 800	N/A N/A 800
-----------------------------------------	------------------------	----------------------------------------	-------------------

VOR-A

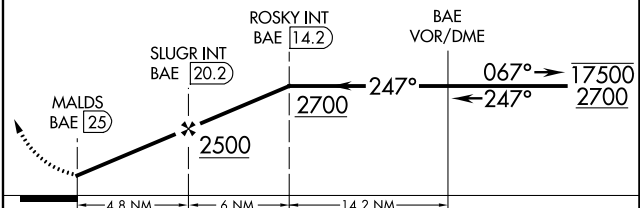
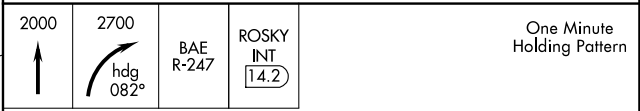
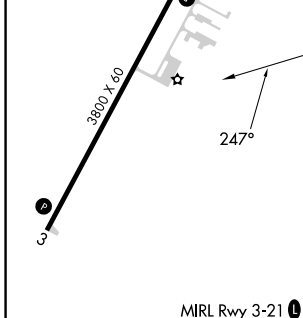
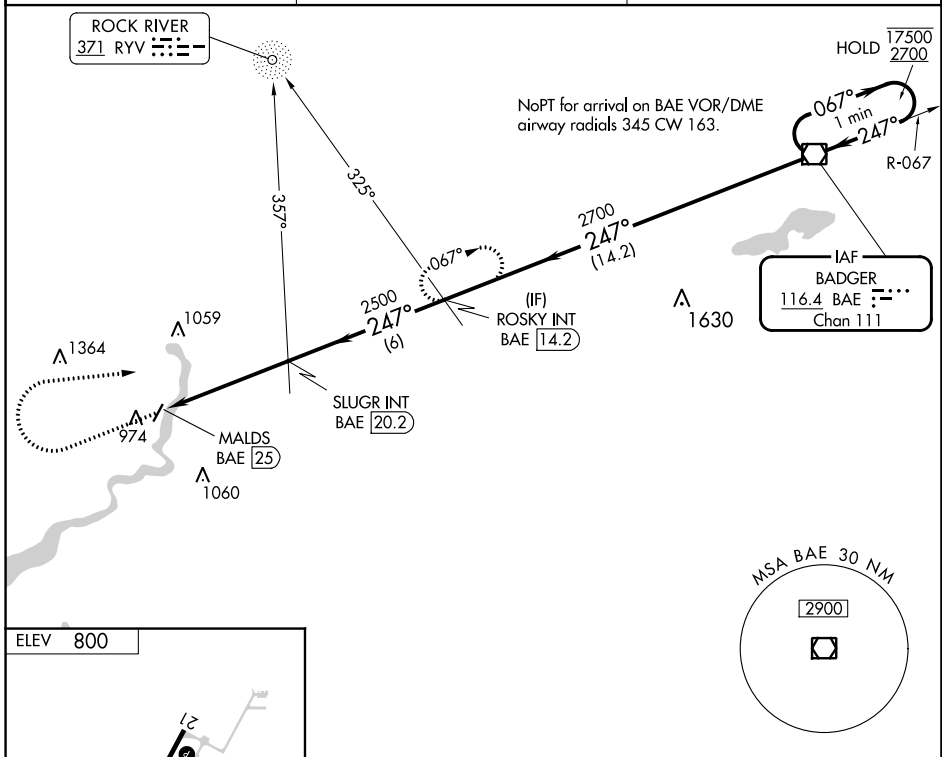
FORT ATKINSON MUNI (61C)

ADF or DME required.

▼ Circling to Rwy 3 NA at night. Rwy 3 helicopter visibility reduction below 1 SM NA. Use Watertown altimeter setting.

MISSED APPROACH: Climb to 2000 then climbing right turn to 2700 on heading 082° and on BAE VOR/DME R-247 to ROSKY INT/BAE 14.2 DME and hold.

RYV AWOS-3 119.975	MADISON APP CON * 120.1 350.3	CTAF 122.9
------------------------------	-----------------------------------------	----------------------



FAF to MAP 4.8 NM					CATEGORY	A	B	C	D	
Knots	60	90	120	150	180	1440-1	640 (700-1)	1460-1 ³ / ₄	660 (700-1 ³ / ₄)	NA
Min:Sec	4:48	3:12	2:24	1:55	1:36	C CIRCLING				

EC-3, 26 DEC 2024 to 23 JAN 2025

EC-3, 26 DEC 2024 to 23 JAN 2025