

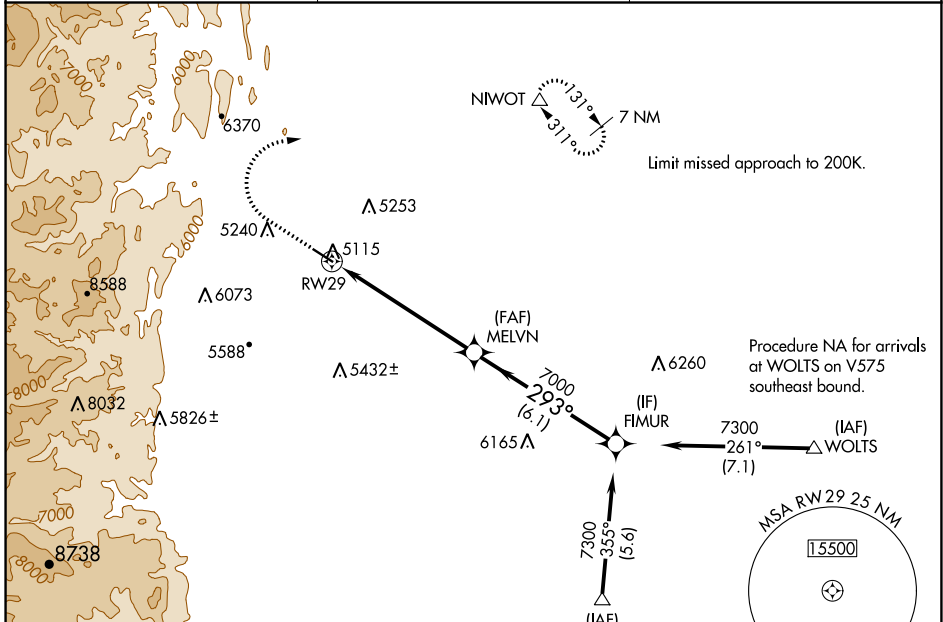
WAAS CH 86834 W29A	APP CRS 293°	Rwy Idg TDZE Apt Elev	4799 5047 5055
--	------------------------	-----------------------------	---

RNAV (GPS) RWY 29

VANCE BRAND (LMO)

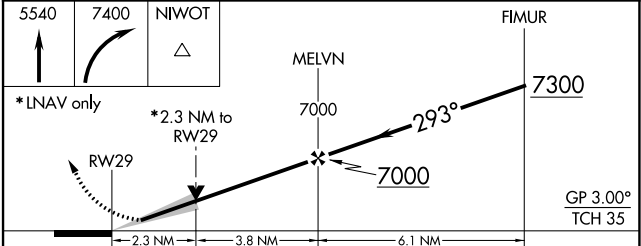
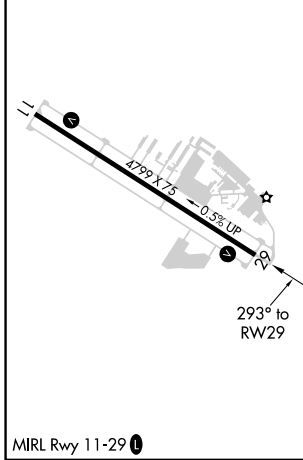
RNP APCH.	MISSED APPROACH: Climb to 5540 then climbing right turn to 7400 direct NIWOT and hold, continue climb-in-hold to 7400.
-----------	--

AWOS-3 120.0	DENVER APP CON 125.12 263.02	UNICOM 122.975 (CTAF) ①
------------------------	--	-----------------------------------



ELEV 5055	TDZE 5047
-----------	-----------

Procedure NA for arrivals at FIPSS on V85 southeast bound.



CATEGORY	A	B	C	D
LPV DA	5338-7/8 291 (300-7/8)			
LNAV/VNAV DA	5387-1 340 (400-1)			
LNAV MDA	5800-1 753 (800-1)	5800-1 1/4 753 (800-1 1/4)	5800-2 805 (900-2 1/4)	753 (800-2)
CIRCLING	5800-1 745 (800-1)	5800-1 1/4 745 (800-1 1/4)	5860-2 1/4 805 (900-2 1/4)	6480-3 1425 (1500-3)

SW-1, 26 DEC 2024 to 23 JAN 2025

SW-1, 26 DEC 2024 to 23 JAN 2025