

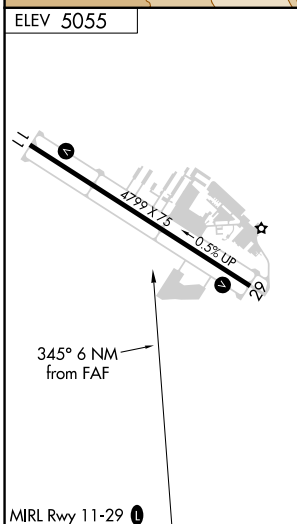
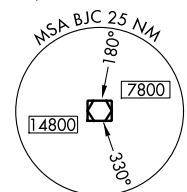
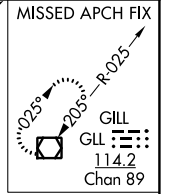
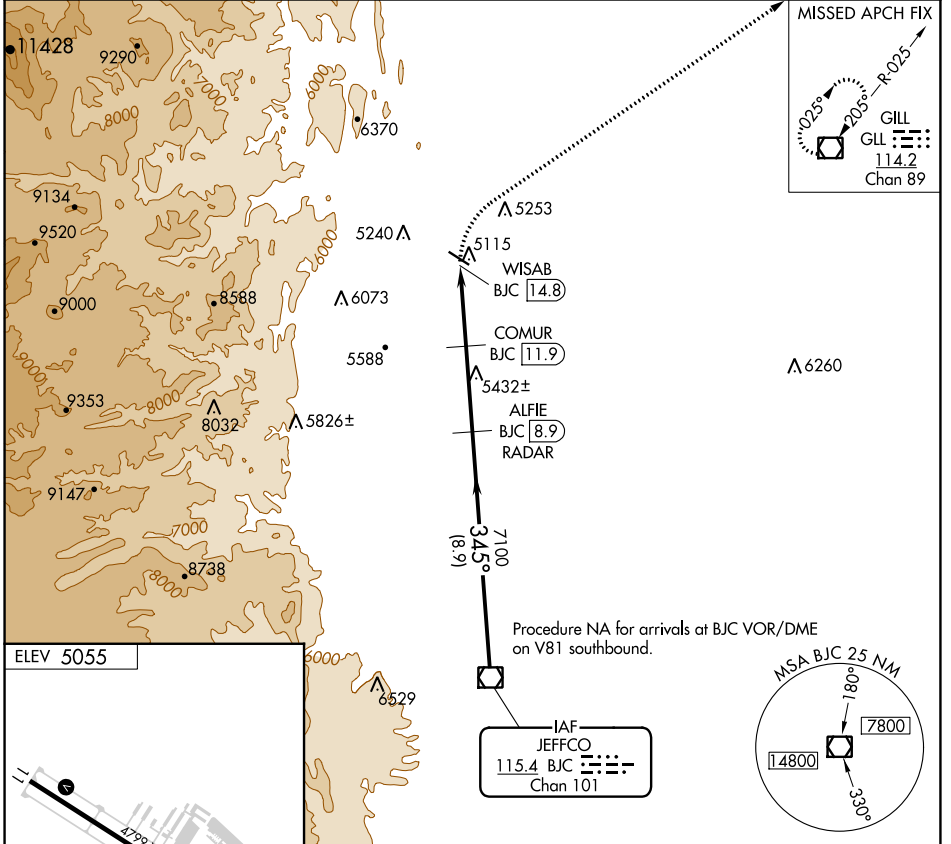
VOR/DME BJC 115.4 Chan 101	APP CRS 345°	Rwy Idg TDZE Apt Elev	N/A N/A 5055
--	------------------------	-----------------------------	---

VOR/DME-A VANCE BRAND (LMO)

⚠ When local altimeter setting not received, use Denver Intl altimeter setting and increase all MDA 120 feet; and increase Cat C visibility ½ mile and Cat D ¼ mile.

MISSED APPROACH: Climbing right turn to 7000 direct GLL VOR/DME and hold.

AWOS-3 120.0	DENVER APP CON 125.12 263.02	UNICOM 122.975 (CTAF) 0
------------------------	--	--



7000	GLL	ALFIE BJC [8.9] RADAR		BJC VOR/DME
6020	WISAB BJC [14.8]	COMUR BJC [11.9]	7100	9200
2.9 NM		3.1 NM		8.9 NM
CATEGORY	A	B	C	D
CIRCLING	5640-1	585 (600-1)	5880-2½ 825 (900-2½)	6500-3 1445 (1500-3)

SW-1, 26 DEC 2024 to 23 JAN 2025

SW-1, 26 DEC 2024 to 23 JAN 2025