

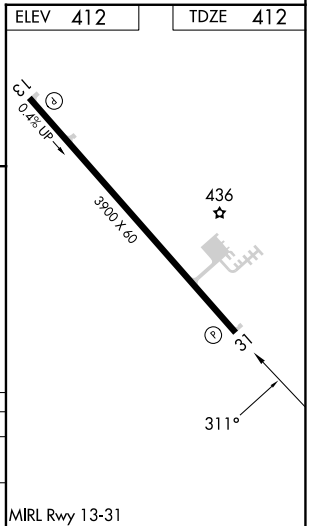
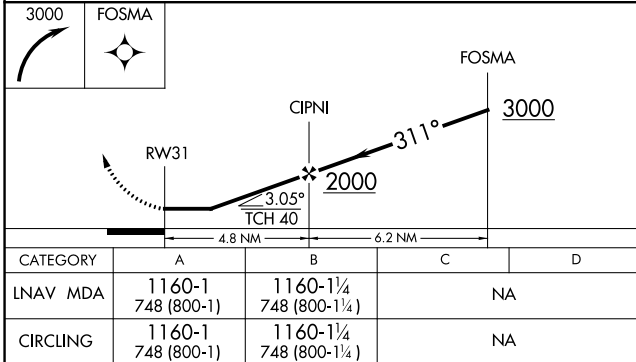
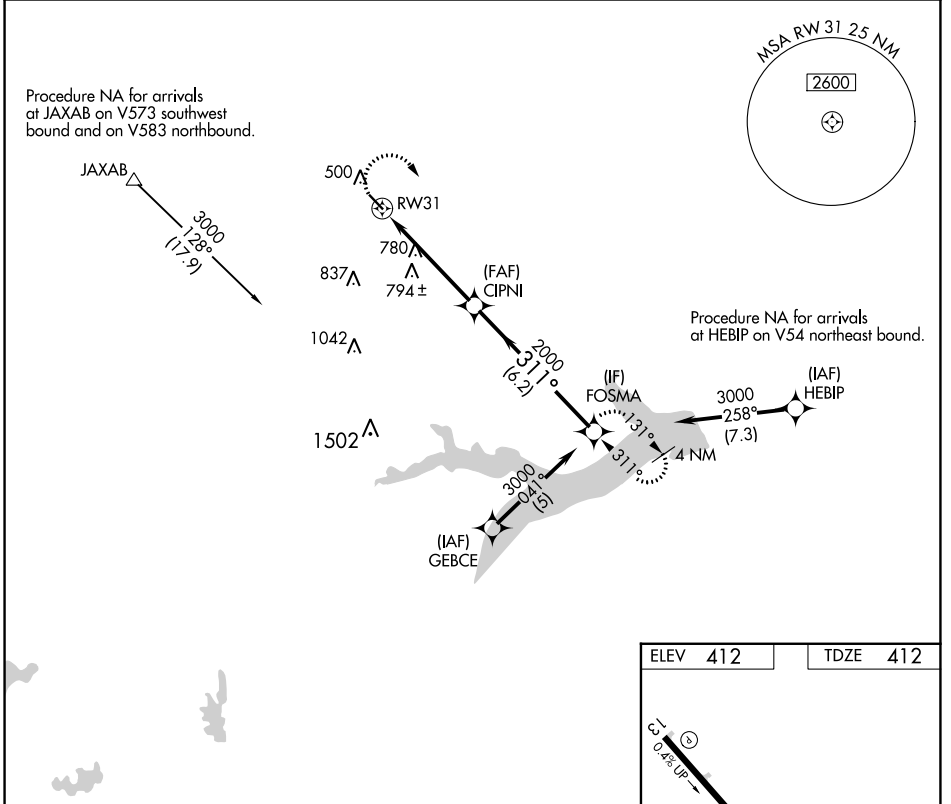
APP CRS <b>311°</b>	Rwy Idg <b>3900</b>
	TDZE <b>412</b>
	Apt Elev <b>412</b>

# RNAV (GPS) RWY 31

FRANKLIN COUNTY (F53)

RNP APCH.	<p>▼ Circling Rwy 13 NA at night. Rwy 31 helicopter visibility reduction below 3/4 SM NA.                  ▲ NA Use Mount Pleasant Rgnl altimeter setting; when not received, procedure NA.</p>	MISSED APPROACH: Climbing right turn to 3000 direct FOSMA and hold.
-----------	---	---

OSA AWOS-3 <b>119.775</b>	FORT WORTH CENTER <b>132.025 360.75</b>	UNICOM <b>123.0</b> (CTAF)
------------------------------	--	-------------------------------



SC-2, 26 DEC 2024 to 23 JAN 2025

SC-2, 26 DEC 2024 to 23 JAN 2025