

| | | |
|-------------|----------|-------------|
| APP CRS | Rwy Idg | 4002 |
| 181° | TDZE | 444 |
| | Apt Elev | 444 |

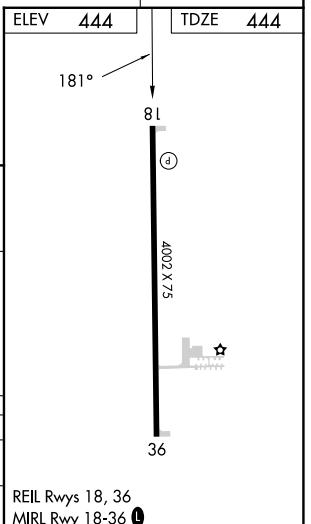
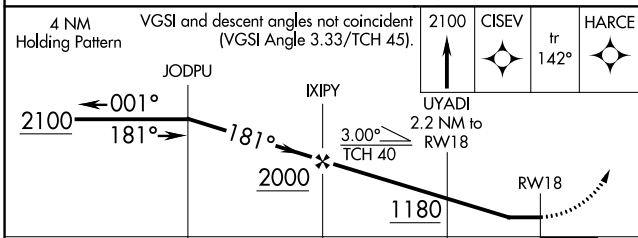
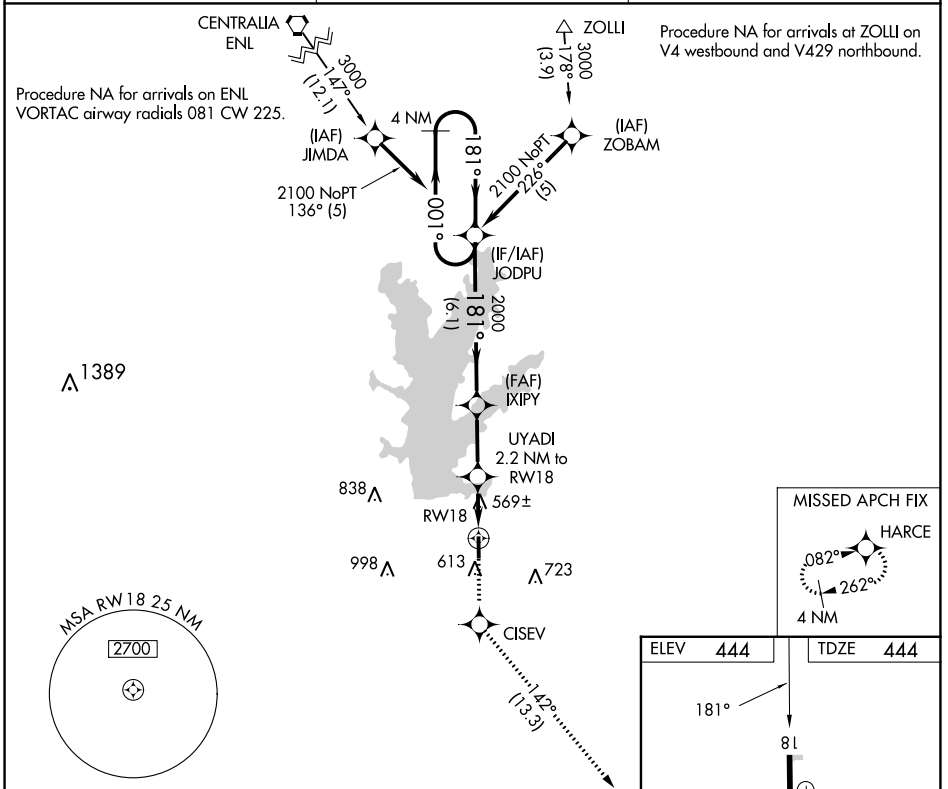
RNAV (GPS) RWY 18

BENTON MUNI (H96)

▼ DME/DME RNP-0.3 NA. Rwy 18 helicopter visibility reduction below 3/4 SM NA.
 Use Marion altimeter setting; when not received, use Mount Vernon altimeter
▲ NA setting and increase all MDA 20 feet and increase LNAV Cat C visibility to 1 1/4 mile.
 Circling Rwy 36 NA at night.

MISSED APPROACH: Climb to 2100 direct CISEV and on track 142° to HARCE and hold.

| | | |
|--------------------------------|--|---------------------------------|
| MWA AWOS-3PT 119.675 | KANSAS CITY CENTER 127.475 346.275 | UNICOM 122.8 (CTAF) 0 |
|--------------------------------|--|---------------------------------|



| CATEGORY | A | B | C | D |
|----------|--------|-------------|------------------------------|----|
| LNAV MDA | 860-1 | 416 (500-1) | 860-1 1/8 416 (500-1 1/8) | NA |
| CIRCLING | 1000-1 | 556 (600-1) | 1120-2 676 (700-2) | NA |

EC-3, 26 DEC 2024 to 23 JAN 2025

EC-3, 26 DEC 2024 to 23 JAN 2025