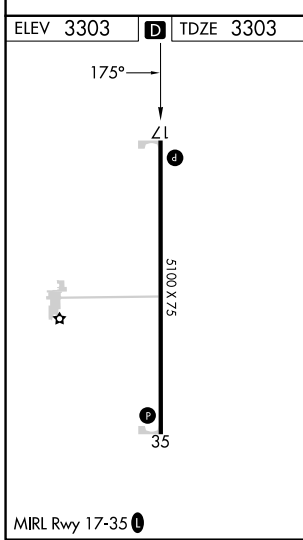
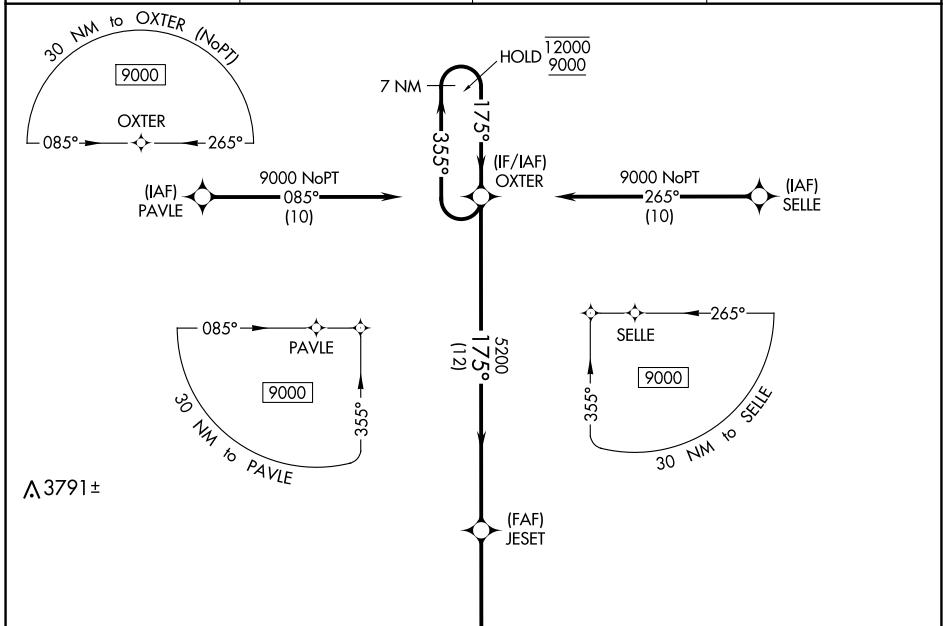


| | | | |
|--|------------------------|-----------------------------|---|
| WAAS CH 63243 W17A | APP CRS 175° | Rwy Idg TDZE Apt Elev | 5100 3303 3303 |
|--|------------------------|-----------------------------|---|

RNAV (GPS) RWY 17

MARK HOARD MEML (3K7)

| | | | |
|---|------------------------------|---|---------------------------------|
| RNP APCH-GPS. | | MISSED APPROACH: Climb to 9000 direct FITAB and hold, continue climb-in-hold to 9000. | |
| ▽ Baro-VNAV NA. ▲ NA Use Syracuse altimeter setting. | | | |
| AWOS-3PT 118.625 | 3K3 AWOS-3 119.975 | DENVER CENTER 132.7 226.675 | UNICOM 122.7 (CTAF) 0 |



| | | | | |
|---|-------------------------------------|--|------------------------------------|---------------------|
| ELEV 3303 | | D | TDZE 3303 | |
| 175° 355° 7 NM 9000 12000 5100 X 75 35 | | MISSED APCH FIX FITAB 175° 355° 7 NM | | |
| 7 NM Holding Pattern 12000 9000 GP 3.00° TCH 40 | | OXTER | JESET | RWY 17 |
| | | ← 355° | → 175° | → 175° |
| | | 7 NM | 12 NM | 5.8 NM |
| 9000 | FITAB | ↑ | ✦ | |
| CATEGORY LPV DA LNAV/VNAV DA LNAV MDA | A 3583-1 3960-1 7/8 3960-1 | B 280 (300-1) 657 (700-1 7/8) 657 (700-1) | C 3960-1 7/8 657 (700-1 7/8) | D NA NA NA |

NC-2, 26 DEC 2024 to 23 JAN 2025

NC-2, 26 DEC 2024 to 23 JAN 2025