

NESS CITY, KANSAS

AL-9052 (FAA)

23110

WAAS CH <b>82244</b> <b>W35A</b>	APP CRS <b>352°</b>	Rwy Idg TDZE Apt Elev	<b>4000</b> <b>2315</b> <b>2322</b>
--	------------------------	-----------------------------	---

# RNAV (GPS) RWY 35

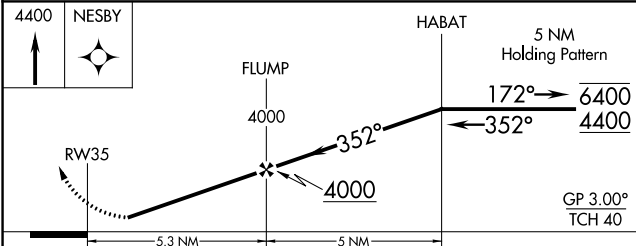
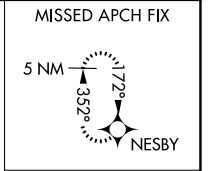
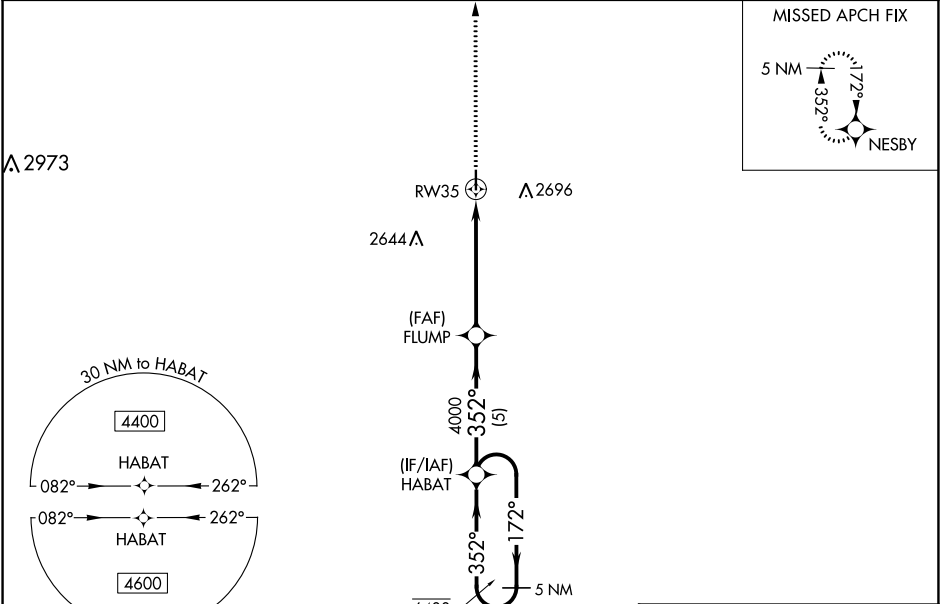
NESS CITY MUNI (48K)

RNP APCH - GPS.

**▽** Rwy 35 helicopter visibility reduction below 3/4 SM NA. Baro-VNAV NA.  
**▲ NA** Use Hays Rgnl altimeter setting, when not received, use Hill City altimeter setting and increase LPV DA to 2702 feet, increase LNAV/VNAV DA to 2714 feet, increase all MDAs 20 feet.

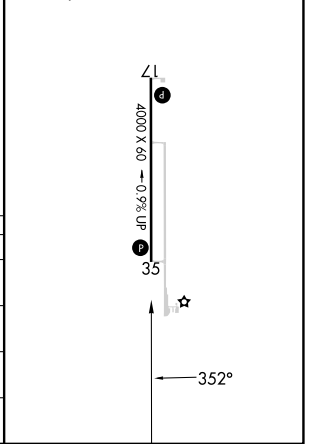
MISSED APPROACH: Climb to 4400 direct NESBY and hold.

HYS AWOS-3PT <b>125.525</b>	KANSAS CITY CENTER <b>124.4 322.4</b>	CTAF <b>122.9</b>
--------------------------------	--	----------------------



ELEV 2322	<b>D</b>	TDZE 2315
-----------	----------	-----------

MIRL Rwy 17-35  
REIL Rwys 17 and 35



CATEGORY	A	B	C	D
LPV DA	2696-1 1/8	381 (400-1 1/8)		NA
LNAV/VNAV DA	2708-1 1/8	393 (400-1 1/8)		NA
LNAV MDA	2860-1	545 (600-1)		NA
CIRCLING	3020-1 698 (700-1)	3140-1 1/4 818 (900-1 1/4)		NA

NESS CITY, KANSAS  
Orig 20APR23

38°28'N-99°55'W

# NESS CITY MUNI (48K)

## RNAV (GPS) RWY 35

NC-2, 26 DEC 2024 to 23 JAN 2025

NC-2, 26 DEC 2024 to 23 JAN 2025