

| | | | |
|--|------------------------|-----------------------------|---|
| WAAS CH 99541 W07A | APP CRS 067° | Rwy Idg TDZE Apt Elev | 6409 5249 5278 |
|--|------------------------|-----------------------------|---|

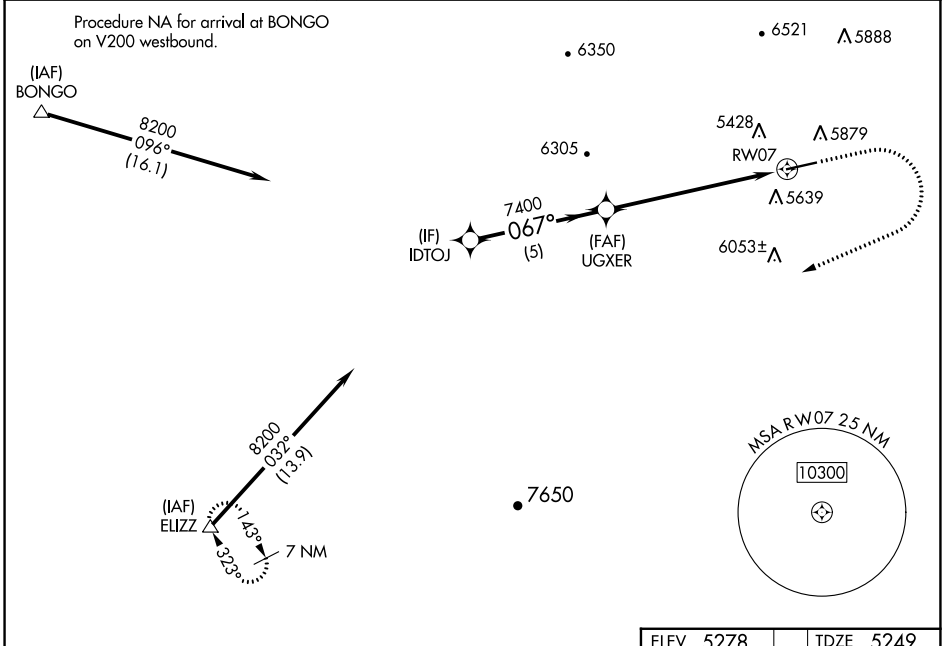
RNAV (GPS) RWY 7

RANGELY (4VØ)

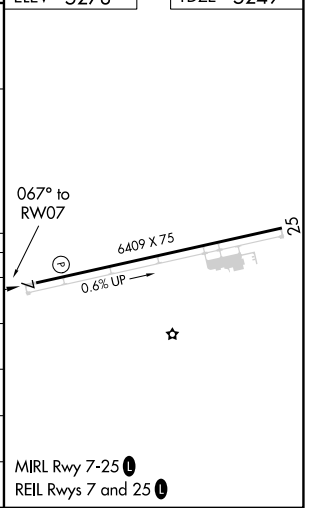
⚠ For uncompensated Baro-VNAV systems, LNAV/VNAV NA below -28°C (-18°F) or above 54°C (130°F). Circling Rwy 25 NA at night. DME/DME RNP-0.3 NA.

MISSED APPROACH: Climb to 5700 then climbing right turn to 10800 direct ELIZZ and hold.
Missed approach requires a minimum climb of 425 feet per NM to 8200 feet.

| | | |
|----------------------------|-------------------------------------|--|
| AWOS-3PT 119.025 | DENVER CENTER 134.5 327.8 | UNICOM 122.8 (CTAF) 📻 |
|----------------------------|-------------------------------------|--|



| IDTOJ | UGXER | RW07 | ELEV 5278 | TDZE 5249 |
|--------------------|---------------------------|---------------------------|-------------------------|-----------|
| | | | 5700 | 10800 |
| 8200 | 7400 | *5.9 NM to RW07 | * LNAV only. | |
| GP 3.00° TCH 40 | 067° | 067° to RW07 | | |
| | 5 NM | 0.8 NM | 5.9 NM | |
| CATEGORY | A | B | C | D |
| LPV DA# | 5599-1 350 (400-1) | | | NA |
| LPV DA | 6013-2½ 764 (800-2½) | | | NA |
| LNAV/VNAV DA | 6041-2½ 792 (800-2½) | | | NA |
| LNAV MDA | 7180-1¼ 1931 (2000-1¼) | 7180-1½ 1931 (2000-1½) | 7180-3 1931 (2000-3) | NA |
| C CIRCLING | 7180-1¼ 1902 (2000-1¼) | 7180-1½ 1902 (2000-1½) | 7180-3 1902 (2000-3) | NA |



SW-1, 26 DEC 2024 to 23 JAN 2025

SW-1, 26 DEC 2024 to 23 JAN 2025