

WAAS CH <b>42833</b> <b>W20A</b>	APP CRS <b>201°</b>	Rwy Idg TDZE Apt Elev	<b>6307</b> <b>4970</b> <b>4970</b>
--	------------------------	-----------------------------	---

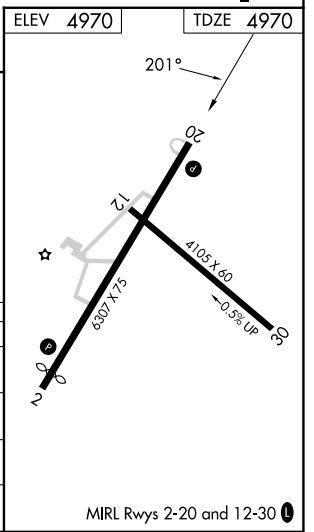
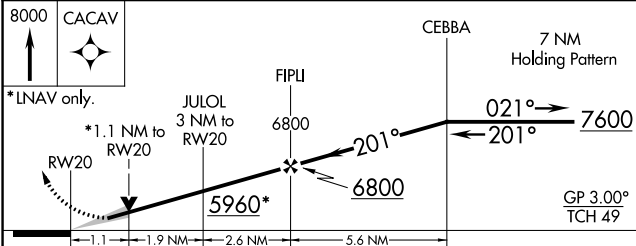
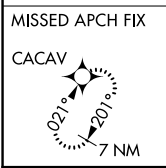
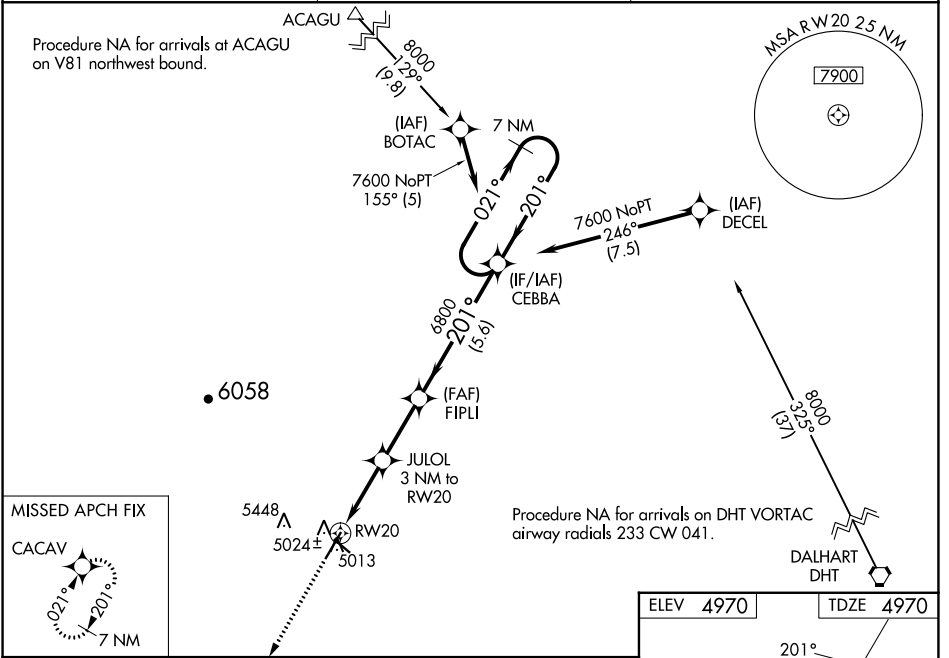
# RNAV (GPS) RWY 20

CLAYTON MUNI AIRPARK (CAO)

**⚠** For uncompensated Baro-VNAV systems, LNAV/VNAV NA below -16°C (4°F) or above 54°C (130°F). Circling NA west of Rwy 2-20. DME/DME RNP-0.3 NA. When local altimeter setting not received, use Dalhart altimeter setting and increase all DA 227 feet and all MDA 240 feet, increase LPV all Cats visibility 7/8 mile, increase LNAV/VNAV all Cats visibility 3/4 mile, increase LNAV Cat C visibility 5/8 mile, and increase circling Cat C visibility 1/4 mile. Baro-VNAV and VDP NA when using Dalhart altimeter setting.

**MISSED APPROACH:** Climb to 8000 direct CACAV and hold, continue climb-in-hold to 8000.

ASOS <b>120.625</b>	ALBUQUERQUE CENTER <b>127.85 285.475</b>	UNICOM <b>122.8 (CTAF) 0</b>
------------------------	---	---------------------------------



CATEGORY	A	B	C	D
LPV DA	5220-3/4	250 (300-3/4)		NA
LNAV/VNAV DA	5300-1 1/8	330 (400-1 1/8)		NA
LNAV MDA	5360-1	390 (400-1)	5360-1 1/8 390 (400-1 1/8)	NA
<b>C</b> CIRCLING	5360-1 390 (400-1)	5420-1 450 (500-1)	5420-1 1/2 450 (500-1 1/2)	NA

SW-1, 26 DEC 2024 to 23 JAN 2025

SW-1, 26 DEC 2024 to 23 JAN 2025