

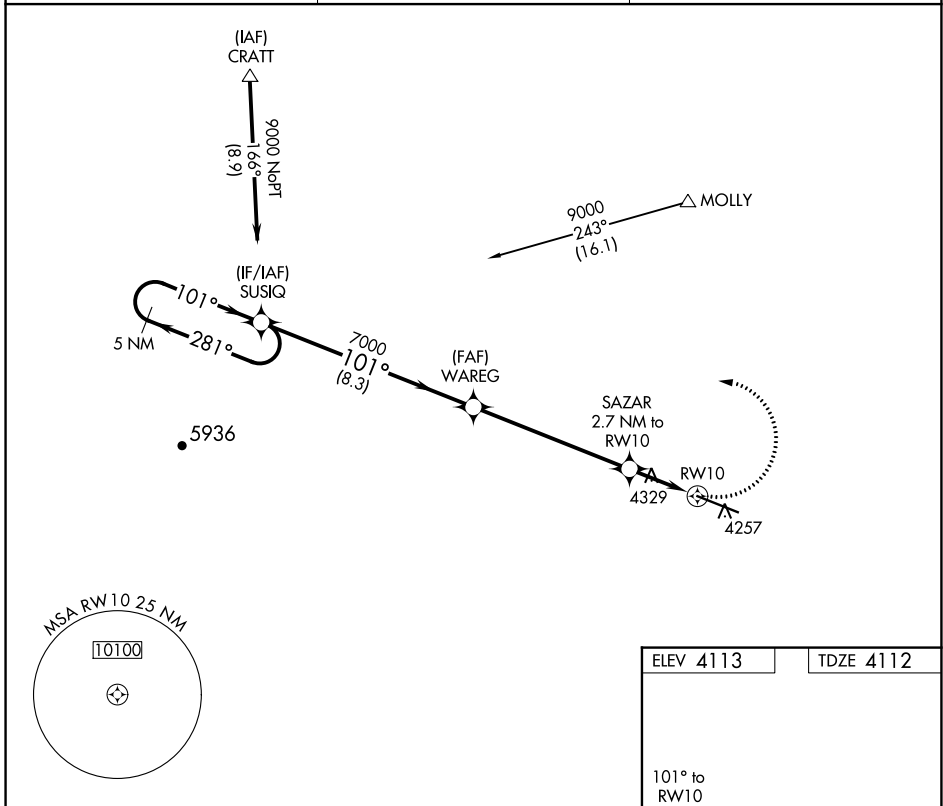
APP CRS	Rwy Idg	<b>9550</b>
<b>101°</b>	TDZE	<b>4112</b>
	Apt Elev	<b>4113</b>

# RNAV (GPS) RWY 10

DONA ANA COUNTY INTL JETPORT (DJA)

<p><b>NA</b> DME/DME RNP-0.3 NA. When local altimeter setting not received, use El Paso Intl altimeter setting.</p>	<p>MISSED APPROACH: Climbing left turn to 9000 direct SUSIQ and hold.</p>
---	---

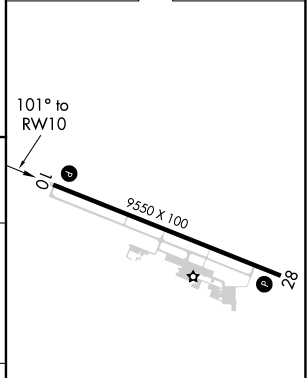
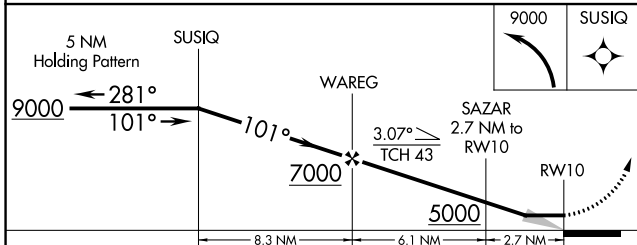
<p>AWOS-3PT <b>124.175</b></p>	<p>EL PASO APP CON <b>119.15</b></p>	<p>AUNICOM <b>122.725 (CTAF) 0</b></p>
------------------------------------	--	--



SW-1, 26 DEC 2024 to 23 JAN 2025

SW-1, 26 DEC 2024 to 23 JAN 2025

ELEV 4113	TDZE 4112
-----------	-----------



CATEGORY	A	B	C	D
LNNAV MDA	4700-1	588 (600-1)	4700-1¾	588 (600-1¾)
<b>C</b> CIRCLING	4760-1	647 (700-1)	4760-1¾	4760-2
			647 (700-¾)	647 (700-2)

MIRL Rwy 10-28 0  
REIL Rwy 10 and 28 0