

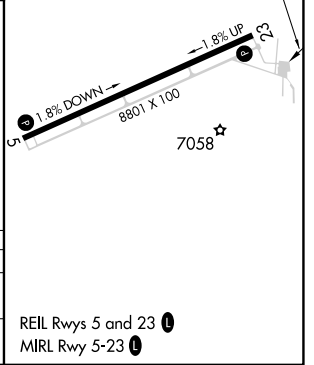
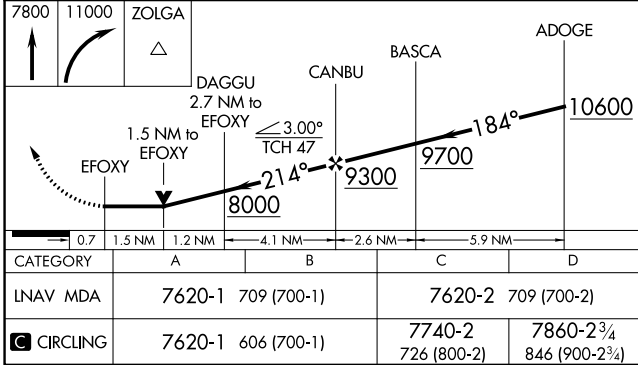
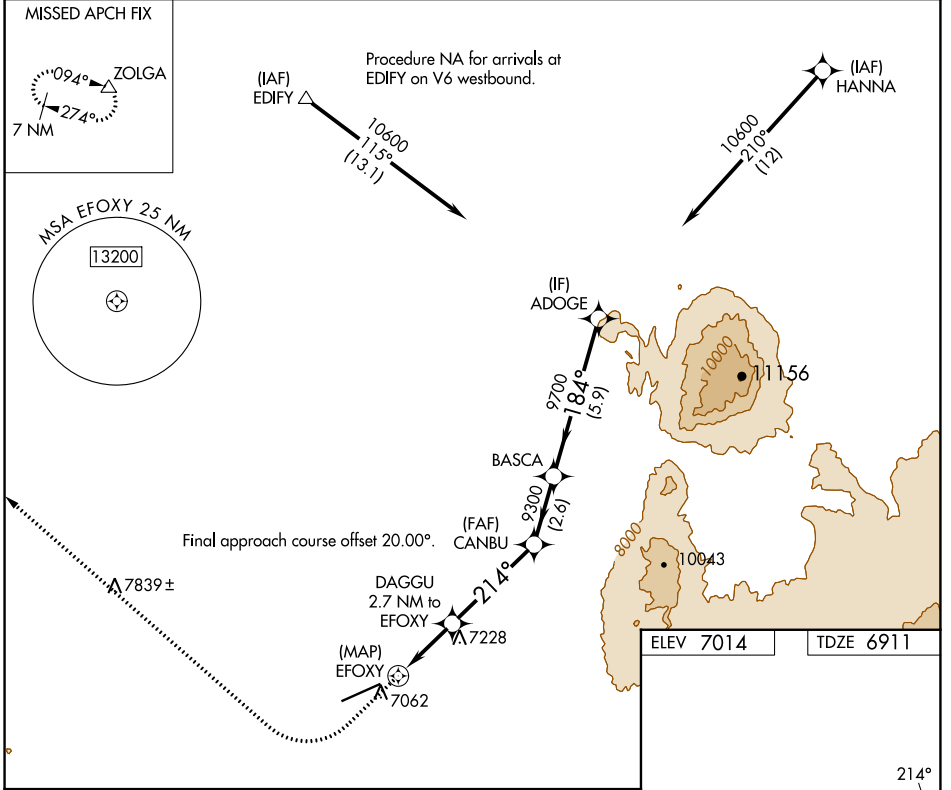
APP CRS 214°	Rwy Idg 8801
TDZE 6911	Apt Elev 7014

RNAV (GPS) RWY 23

SHIVELY FLD (SAA)

RNP APCH - GPS.	MISSED APPROACH: Climb to 7800 then climbing right turn to 11000 direct ZOLGA and hold.
Rwy 23 helicopter visibility reduction below 3/4 SM NA.	

AWOS-3PT 118.175	DENVER CENTER 132.1 254.35	UNICOM 122.8 (CTAF) 1
----------------------------	--------------------------------------	---------------------------------



NW-1, 26 DEC 2024 to 23 JAN 2025

NW-1, 26 DEC 2024 to 23 JAN 2025

REIL Rwy 5 and 23 1
MIRL Rwy 5-23 1