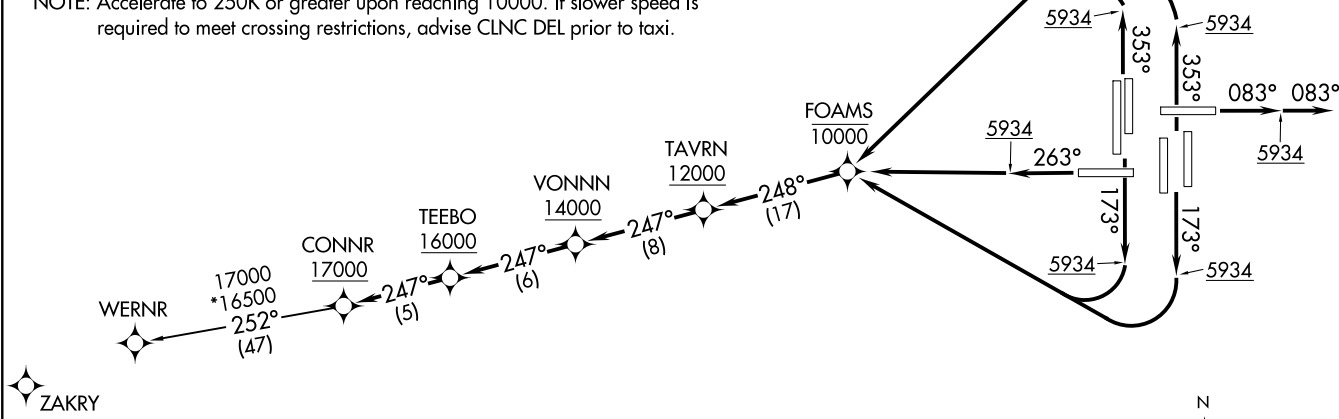


CONNR SEVEN DEPARTURE (RNAV)
(CONNR7.CONNR) 26MAR20

- NOTE: DME/DME/IRU or GPS required.
- NOTE: RNAV 1.
- NOTE: Turbojets only.
- NOTE: Takeoff Rwy 8 RADAR required.
- NOTE: Takeoff Rws 16L/R, 17L/R, 25, 34L/R, 35L/R, RADAR required for non-GPS equipped aircraft.
- NOTE: Accelerate to 250K or greater upon reaching 10000. If slower speed is required to meet crossing restrictions, advise CLNC DEL prior to taxi.

**TOP ALTITUDE:
FL230**

D-ATIS DEP 134.025
CLNC DEL 118.75
CPDLC
DENVER DEP CON 126.1 360.75



TAKEOFF MINIMUMS

Rwys 7, 26: NA - ATC.

Rwy 8: Standard.

Rwy 16L: Standard with minimum climb 425' per NM to 5934, then minimum climb of 210' per NM to 16000.

Rwy 16R: Standard with minimum climb 420' per NM to 5934, then minimum climb of 250' per NM to 16000.

Rwy 17L: Standard with minimum climb 450' per NM to 5934.

Rwy 17R: Standard with minimum climb 460' per NM to 5934, then minimum climb of 205' per NM to 16000.

Rwy 25: Standard with minimum climb 400' per NM to 5934, then minimum climb of 225' per NM to 16000.

Rwys 34L/R: Standard with minimum climb 400' per NM to 5934, then minimum climb of 210' per NM to 16000.

Rwys 35L/R: Standard with minimum climb 400' per NM to 5934.

(NARRATIVE ON FOLLOWING PAGE)

NOTE: Chart not to scale.

(CONNR7.CONNR) 20086
CONNR SEVEN DEPARTURE (RNAV)

AL-9077 (FAA)

DENVER INTL (DEN)
DENVER, COLORADO

DENVER, COLORADO
DENVER INTL (DEN)



DEPARTURE ROUTE DESCRIPTION
SEE ADDITIONAL REQUIREMENTS ON AAUP

TAKEOFF RUNWAY 8: Climb on heading 083° to 5934, then on heading 083° or as assigned by ATC, expect vectors to cross TAVRN at or above 12000, thence. . . .

TAKEOFF RUNWAY 16L/R, 17L/R: Climb on heading 173° to 5934, then climbing right turn direct to cross FOAMS at or below 10000, then on track 248° to cross TAVRN at or above 12000, thence. . . .

TAKEOFF RUNWAY 25: Climb on heading 263° to 5934, then climb direct to cross FOAMS at or below 10000, then on track 248° to cross TAVRN at or above 12000, thence. . . .

TAKEOFF RUNWAYS 34L/R, 35L/R: Climb on heading 353° to 5934, then climbing left turn direct to cross FOAMS at or below 10000, then on track 248° to cross TAVRN at or above 12000, thence. . . .

. . . .on track 247° to cross VONNN at or above 14000, then on track 247° to cross TEEBO at or above 16000, then on track 247° to cross CONNR at or above 17000. Then on (transition) maintain FL230 or filed lower altitude. Expect higher filed altitude ten minutes after departure.

WERNR TRANSITION (CONNR7.WERNR)

SW-1, 26 DEC 2024 to 23 JAN 2025

SW-1, 26 DEC 2024 to 23 JAN 2025