

COORZ SIX DEPARTURE (RNAV)  
(COORZ6, COORZ) 26MARR20

DENVER, COLORADO  
DENVER INTL (DEN)

- NOTE: DME/DME/IRU or GPS required.
- NOTE: RNAV 1.
- NOTE: Turbojets only.
- NOTE: Takeoff Rwy 8, RADAR required.
- NOTE: Takeoff Rws 16L/R, 17L/R, 25, 34L/R, 35L/R, - RADAR required for non-GPS equipped aircraft.
- NOTE: Accelerate to 250K or greater upon reaching 10000. If slower speed is required to meet crossing restrictions advise CLNC DEL prior to taxi.

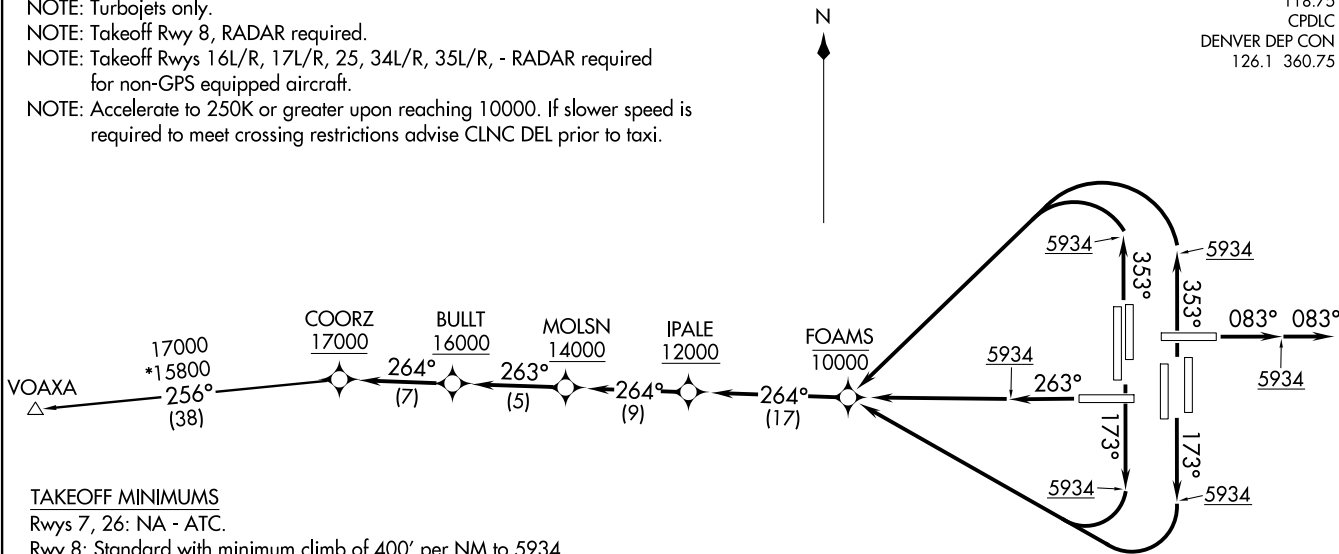
**TOP ALTITUDE:  
FL230**

D-ATIS DEP  
134.025  
CLNC DEL  
118.75  
CPDLC  
DENVER DEP CON  
126.1 360.75

(COORZ6, COORZ) 20086  
COORZ SIX DEPARTURE (RNAV)

AL-9077 (FAA)

DENVER INTL (DEN)  
DENVER, COLORADO



**TAKEOFF MINIMUMS**  
Rwys 7, 26: NA - ATC.

- Rwy 8: Standard with minimum climb of 400' per NM to 5934.
- Rwy 16L: Standard with minimum climb of 400' per NM to 5934, then minimum climb of 215' per NM to 16000.
- Rwy 16R: Standard with minimum climb of 480' per NM to 5934, then minimum climb of 215' per NM to 16000.
- Rwy 17L: Standard with minimum climb of 400' per NM to 5934.
- Rwy 17R: Standard with minimum climb of 400' per NM to 5934, then minimum climb of 205' per NM to 16000.
- Rwy 25: Standard with minimum climb of 425' per NM to 5934, then minimum climb of 225' per NM to 16000.
- Rwy 34L: Standard with minimum climb of 400' per NM to 5934, then minimum climb of 215' per NM to 16000.
- Rwy 34R: Standard with minimum climb of 400' per NM to 5934, then minimum climb of 210' per NM to 16000.
- Rwy 35L: Standard with minimum climb of 360' per NM to 5934, then minimum climb of 205' per NM to 16000.
- Rwy 35R: Standard with minimum climb of 375' per NM to 5934.

(NARRATIVE ON FOLLOWING PAGE)

NOTE: Chart not to scale.



DEPARTURE ROUTE DESCRIPTION  
SEE ADDITIONAL REQUIREMENTS ON AAUP

TAKEOFF RUNWAY 8: Climb on heading 083° to 5934, then on heading 083° or as assigned by ATC, expect vectors to cross IPALE at or above 12000, thence. . . .

TAKEOFF RUNWAYS 16L/R, 17L/R: Climb on heading 173° to 5934, then climbing right turn direct to cross FOAMS at or below 10000, then on track 264° to cross IPALE at or above 12000, thence. . . .

TAKEOFF RUNWAY 25: Climb on heading 263° to 5934, then climb direct to cross FOAMS at or below 10000, then on track 264° to cross IPALE at or above 12000, thence. . . .

TAKEOFF RUNWAYS 34L/R, 35L/R: Climb on heading 353° to 5934, then climbing left turn direct to cross FOAMS at or below 10000, then on track 264° to cross IPALE at or above 12000, thence. . . .

. . . .on track 264° to cross MOLSN at or above 14000, then on track 263° to cross BULLT at or above 16000, then on track 264° to cross COORZ at or above 17000. Then on (transition) maintain FL230 or filed lower altitude. Expect higher filed altitude ten minutes after departure.

VOAXA TRANSITION (COORZ6.VOAXA)

SW-1, 26 DEC 2024 to 23 JAN 2025

SW-1, 26 DEC 2024 to 23 JAN 2025