

DDRTH ONE DEPARTURE (RNAV)

AL-9077 (FAA)

DENVER INTL (DEN)
DENVER, COLORADO

**TOP ALTITUDE:
FL230**

D-ATIS DEP
134.025
CLNC DEL
118.75
CPDLC
DENVER DEP CON
127.05 363.25

TAKEOFF MINIMUMS

Rwys 7, 26: NA-ATC.

Rwy 8: Standard with minimum climb of 410' per NM to 5934.

Rwys 16L/R, 17L/R: Standard.

Rwys 25, 34L/R, 35L/R: Standard with minimum climb of 400' per NM to 5934.

NOTE: DME/DME/IRU or GPS required.

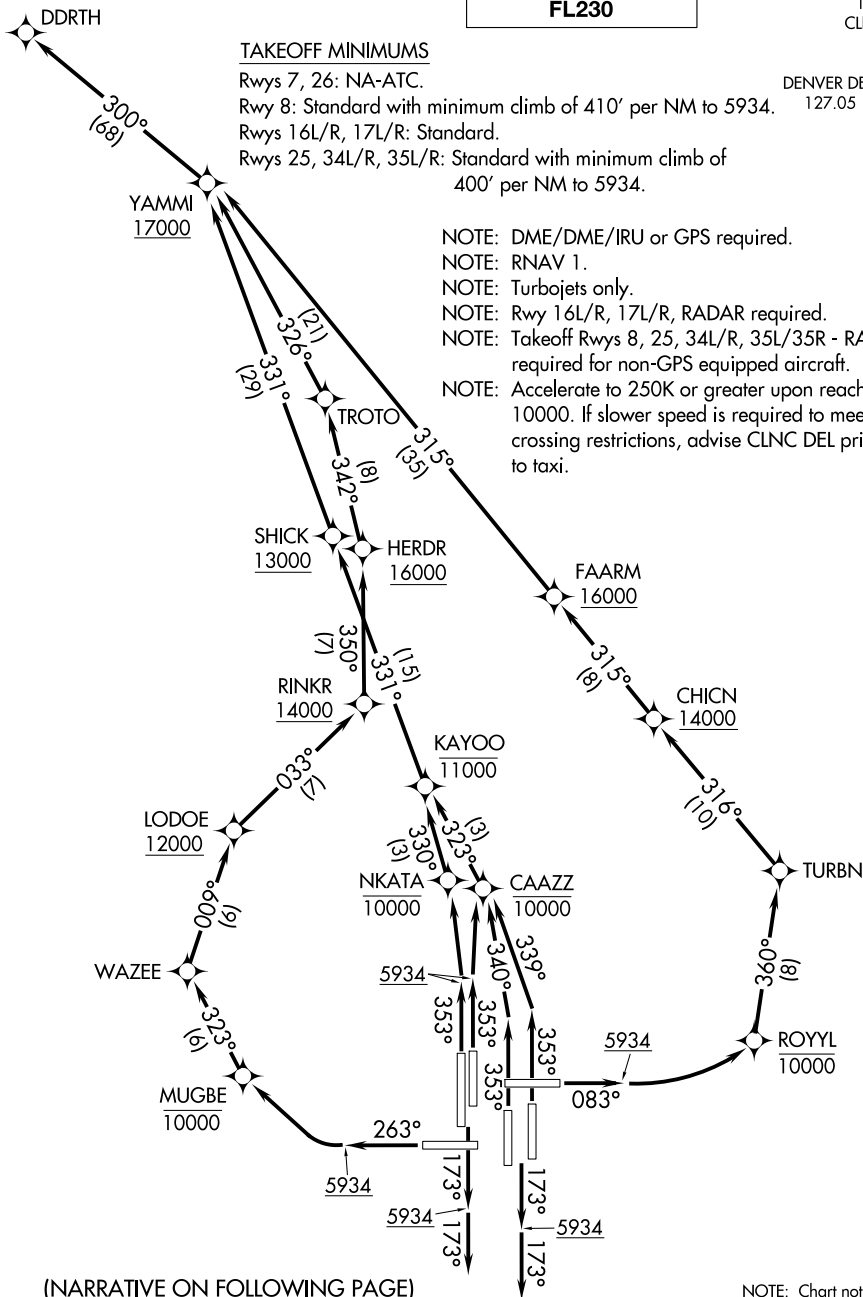
NOTE: RNAV 1.

NOTE: Turbojets only.

NOTE: Rwy 16L/R, 17L/R, RADAR required.

NOTE: Takeoff Rwys 8, 25, 34L/R, 35L/35R - RADAR required for non-GPS equipped aircraft.

NOTE: Accelerate to 250K or greater upon reaching 10000. If slower speed is required to meet crossing restrictions, advise CLNC DEL prior to taxi.



(NARRATIVE ON FOLLOWING PAGE)

NOTE: Chart not to scale.

DDRTH ONE DEPARTURE (RNAV)



DEPARTURE ROUTE DESCRIPTION
SEE ADDITIONAL REQUIREMENTS ON AAUP

TAKEOFF RUNWAY 8: Climb on heading 083° to 5934, then climbing left turn direct to cross ROYYL at or below 10000, then on track 360° to TURBN, then on track 316° to cross CHICN at or above 14000, then on track 315° to cross FAARM at or above 16000, then on track 315° to cross YAMMI at or above 17000, thence

TAKEOFF RUNWAYS 16L/R, 17L/R: Climb on heading 173° to 5934, then on heading 173° or as assigned by ATC, expect vectors to cross YAMMI at or above 17000, thence

TAKEOFF RUNWAY 25: Climb on heading 263° to 5934, then climbing right turn direct to cross MUGBE at or below 10000, then on track 323° to WAZEE, then on track 009° to cross LODOE at or above 12000, then on track 033° to cross RINKR at or above 14000, then on track 350° to cross HERDR at or above 16000, then on track 342° to TROTO, then on track 326° to cross YAMMI at or above 17000, thence

TAKEOFF RUNWAY 34L: Climb on heading 353° to 5934, then climb direct to cross NKATA at or below 10000, then on track 330° to cross KAYOO at or below 11000, then on track 331° to cross SHICK at or above 13000, then on track 331° to cross YAMMI at or above 17000, thence

TAKEOFF RUNWAY 34R: Climb on heading 353° to 5934, then climb direct to cross CAAZZ at or below 10000, then on track 323° to cross KAYOO at or below 11000, then on track 331° to cross SHICK at or above 13000, then on track 331° to cross YAMMI at or above 17000, thence

TAKEOFF RUNWAY 35L: Climb on heading 353° to intercept course 340° to cross CAAZZ at or below 10000, then on track 323° to cross KAYOO at or below 11000, then on track 331° to cross SHICK at or above 13000, then on track 331° to cross YAMMI at or above 17000, thence

TAKEOFF RUNWAY 35R: Climb on heading 353° to intercept course 339° to cross CAAZZ at or below 10000, then on track 323° to cross KAYOO at or below 11000, then on track 331° to cross SHICK at or above 13000, then on track 331° to cross YAMMI at or above 17000, thence

. . . . on track 300° to DDRTH, maintain FL230 or filed lower altitude. Expect higher filed altitude ten minutes after departure.

SW-1, 26 DEC 2024 to 23 JAN 2025

SW-1, 26 DEC 2024 to 23 JAN 2025