

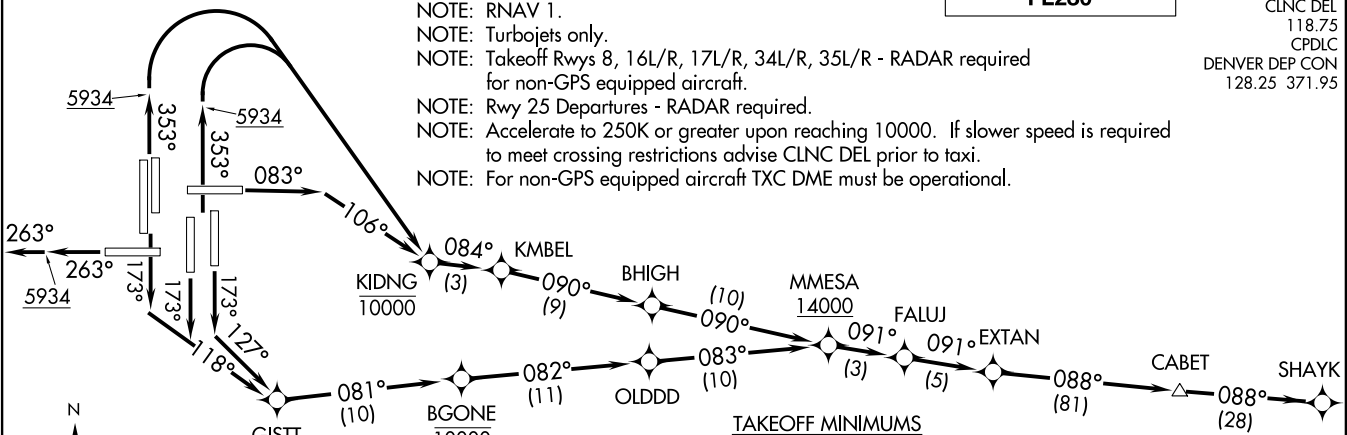
EXTAN SEVEN DEPARTURE (RNAV)  
(EXTAN7.SHAYK) 17JUN21

DENVER, COLORADO  
DENVER INTL (DEN)

**TOP ALTITUDE:  
FL230**

D-ATIS DEP 134.025  
CLNC DEL 118.75  
CPDLC  
DENVER DEP CON 128.25 371.95

NOTE: DME/DME/IRU or GPS required.  
NOTE: RNAV 1.  
NOTE: Turbojets only.  
NOTE: Takeoff Rwys 8, 16L/R, 17L/R, 34L/R, 35L/R - RADAR required for non-GPS equipped aircraft.  
NOTE: Rwy 25 Departures - RADAR required.  
NOTE: Accelerate to 250K or greater upon reaching 10000. If slower speed is required to meet crossing restrictions advise CLNC DEL prior to taxi.  
NOTE: For non-GPS equipped aircraft TXC DME must be operational.



**TAKEOFF MINIMUMS**  
Rwys 7, 26: NA-ATC.  
Rwy 8: Standard with minimum climb of 500' per NM to 5934 then minimum climb of 260' per NM to 14000.  
Rwy 16L: Standard with minimum climb of 245' per NM to 14000.  
Rwy 16R: Standard with minimum climb of 450' per NM to 5934 then minimum climb of 225' per NM to 14000.  
Rwy 17L: Standard with minimum climb of 465' per NM to 5934 then minimum climb of 280' per NM to 14000.  
Rwy 17R: Standard with minimum climb of 465' per NM to 5934 then minimum climb of 250' per NM to 14000.  
Rwy 25: Standard with minimum climb of 400' per NM to 5934.  
Rwy 34L: Standard with minimum climb of 500' per NM to 5934 then minimum climb of 220' per NM to 14000.  
Rwy 34R: Standard with minimum climb of 500' per NM to 5934 then minimum climb of 230' per NM to 14000.  
Rwys 35L/R: Standard with minimum climb of 500' per NM to 5934 then minimum climb of 240' per NM to 14000.

NOTE: Chart not to scale.

(NARRATIVE ON FOLLOWING PAGE)

(EXTAN7.SHAYK) 21168  
EXTAN SEVEN DEPARTURE (RNAV)  
AL-9077 (FAA)  
DENVER INTL (DEN)  
DENVER, COLORADO



DEPARTURE ROUTE DESCRIPTION

TAKEOFF RUNWAY 8: Climb on heading 083° to intercept course 106° to cross KIDNG at or below 10000, then on track 084° to KMBEL, then on track 090° to BHIGH, then on track 090° to cross MMESA at or above 14000, thence . . . .

TAKEOFF RUNWAYS 16L/R, 17R: Climb on heading 173° to intercept course 118° to cross GISTT at or above 7000, then on track 081° to cross BGONE at or below 10000, then on track 082° to OLD DD, then on track 083° to cross MMESA at or above 14000, thence . . . .

TAKEOFF RUNWAY 17L: Climb on heading 173° to intercept course 127° to cross GISTT at or above 7000, then on track 081° to cross BGONE at or below 10000, then on track 082° to OLD DD, then on track 083° to cross MMESA at or above 14000, thence . . . .

TAKEOFF RUNWAY 25: Climb on heading 263° to 5934, then continue climb on heading 263° or as assigned by ATC for RADAR vectors to EXTAN, thence . . . .

TAKEOFF RUNWAYS 34L/R, 35L/R: Climb on heading 353° to 5934, then climbing right turn direct to cross KIDNG at or below 10000, then on track 084° to KMBEL, then on track 090° to BHIGH, then on track 090° to cross MMESA at or above 14000, thence . . . .

. . . . on depicted route to SHAYK, maintain FL230 or filed lower altitude, expect higher filed altitude 10 minutes after departure.

SW-1, 26 DEC 2024 to 23 JAN 2025

SW-1, 26 DEC 2024 to 23 JAN 2025