

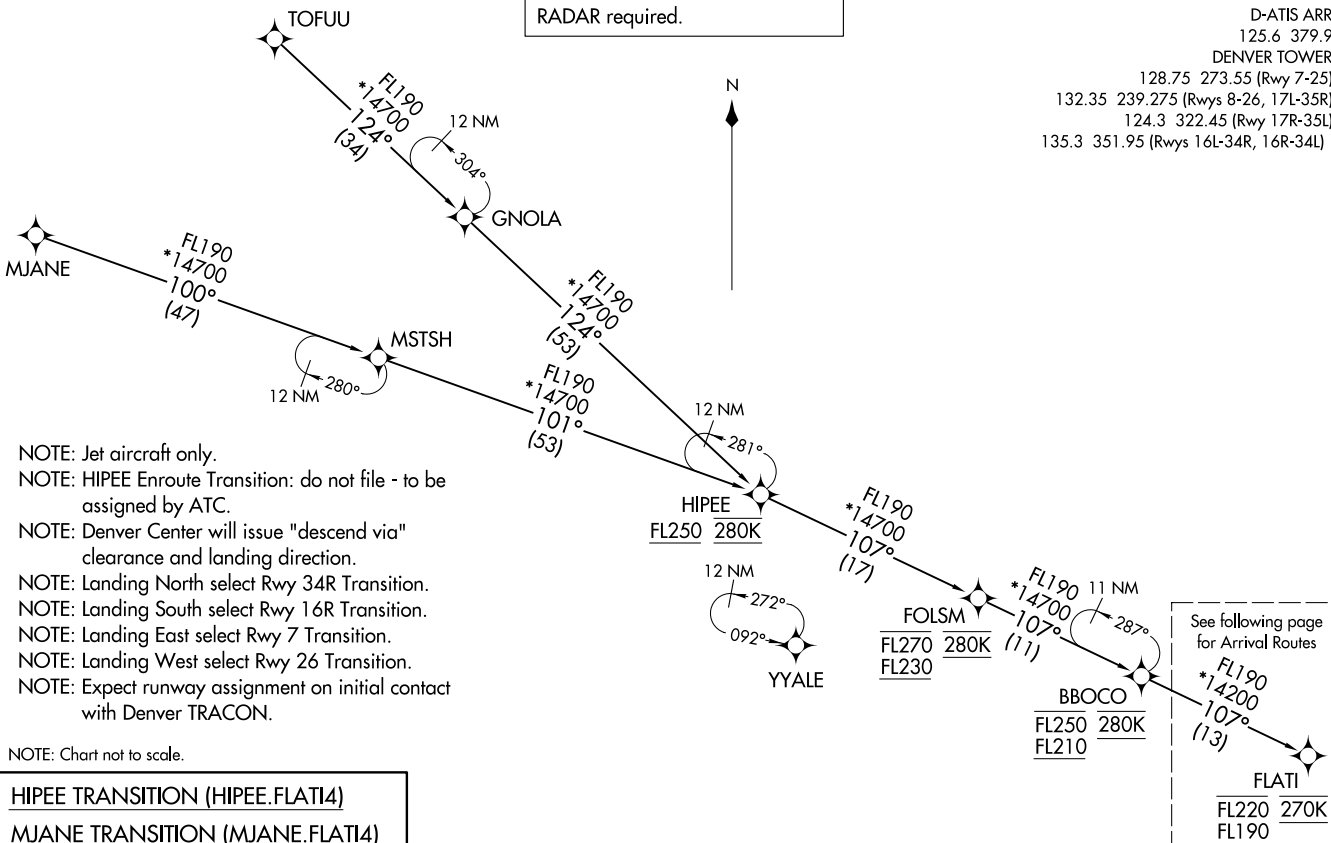
RNAV 1 - DME/DME/IRU or GPS.

RADAR required.

DENVER APP CON  
 119.3 307.3  
 D-ATIS ARR  
 125.6 379.9  
 DENVER TOWER  
 128.75 273.55 (Rwy 7-25)  
 132.35 239.275 (Rwys 8-26, 17L-35R)  
 124.3 322.45 (Rwy 17R-35L)  
 135.3 351.95 (Rwys 16L-34R, 16R-34L)

FLATI FOUR ARRIVAL (RNAV) Transition Routes  
 (FLATI.FLATI4) 16MAY24

(FLATI.FLATI4) 24137  
 AL-9077 (FAA)  
 DENVER INTL (DEN)  
 DENVER, COLORADO



- NOTE: Jet aircraft only.
- NOTE: HIPEE Enroute Transition: do not file - to be assigned by ATC.
- NOTE: Denver Center will issue "descend via" clearance and landing direction.
- NOTE: Landing North select Rwy 34R Transition.
- NOTE: Landing South select Rwy 16R Transition.
- NOTE: Landing East select Rwy 7 Transition.
- NOTE: Landing West select Rwy 26 Transition.
- NOTE: Expect runway assignment on initial contact with Denver TRACON.

NOTE: Chart not to scale.

- HIPEE TRANSITION (HIPEE.FLATI4)
- MJANE TRANSITION (MJANE.FLATI4)
- TOFUU TRANSITION (TOFUU.FLATI4)

(CONTINUED ON FOLLOWING PAGE)

DENVER, COLORADO  
 DENVER INTL (DEN)

(FLATI.FLATI4) 24137

AL-9077 (FAA)

DENVER INTL (DEN)  
DENVER, COLORADO

# FLATI FOUR ARRIVAL (RNAV) Arrival Routes

RNAV 1 - DME/DME/IRU or GPS.

RADAR required.

DENVER APP CON

119.3 307.3

D-ATIS ARR

125.6 379.9

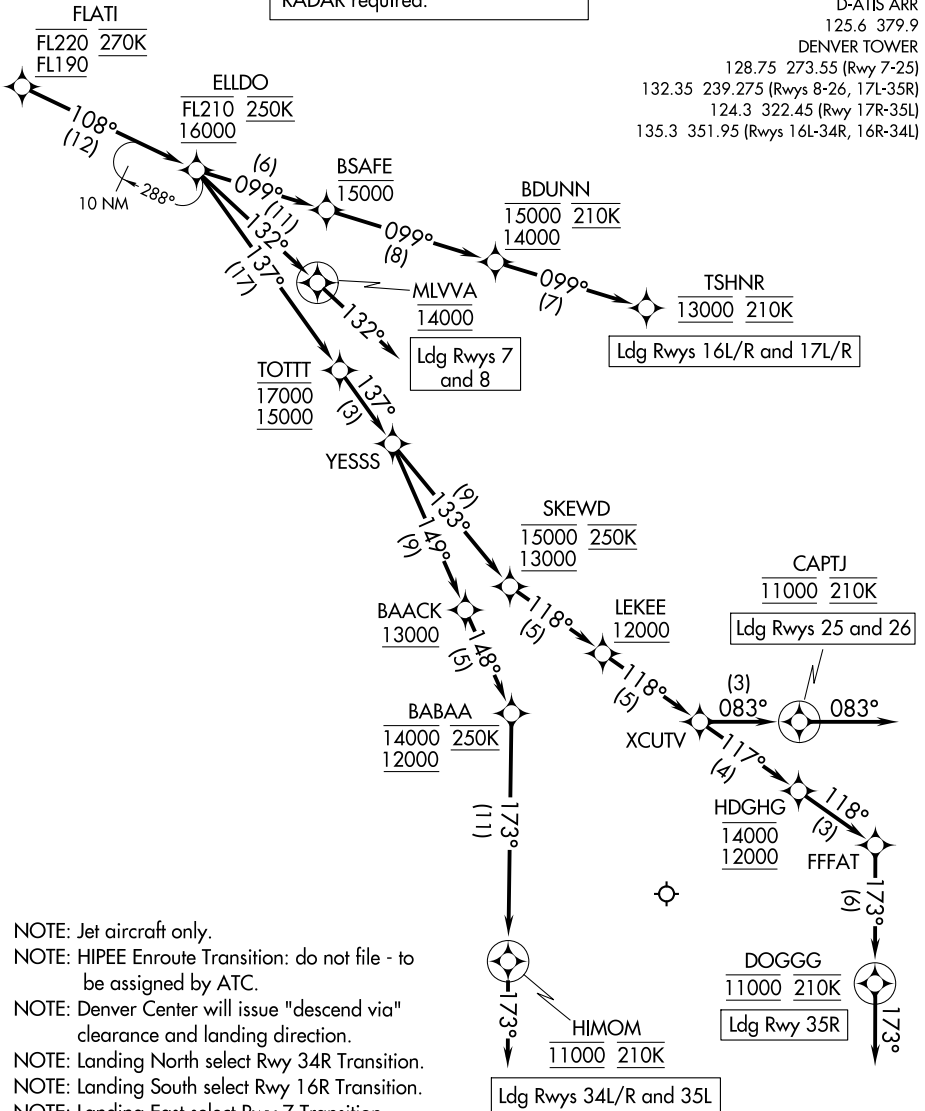
DENVER TOWER

128.75 273.55 (Rwys 7-25)

132.35 239.275 (Rwys 8-26, 17L-35R)

124.3 322.45 (Rwy 17R-35L)

135.3 351.95 (Rwys 16L-34R, 16R-34L)



NOTE: Jet aircraft only.

NOTE: HIPEE Enroute Transition: do not file - to be assigned by ATC.

NOTE: Denver Center will issue "descend via" clearance and landing direction.

NOTE: Landing North select Rwy 34R Transition.

NOTE: Landing South select Rwy 16R Transition.

NOTE: Landing East select Rwy 7 Transition.

NOTE: Landing West select Rwy 26 Transition.

NOTE: Expect runway assignment on initial contact with Denver TRACON.

(CONTINUED ON FOLLOWING PAGE)

NOTE: Chart not to scale.

# FLATI FOUR ARRIVAL (RNAV) Arrival Routes

(FLATI.FLATI4) 16MAY24

DENVER, COLORADO  
DENVER INTL (DEN)

SW-1, 26 DEC 2024 to 23 JAN 2025

SW-1, 26 DEC 2024 to 23 JAN 2025

ARRIVAL ROUTE DESCRIPTION

From FLATI on track 108° to cross ELLDO between 16000 and FL210 and at 250K.

LANDING RUNWAYS 7, 8: From ELLDO on track 132° to cross MLVVA at 14000, then on track 132°. Expect RADAR vectors to final approach course.

LANDING RUNWAYS 16L/R, 17L/R: From ELLDO on track 099° to cross BSAFE at or below 15000, then on track 099° to cross BDUNN between 14000 and 15000 and at 210K, then on track 099° to cross TSHNR at 13000 and at 210K. Expect ILS or LOC RWY 16L/R or ILS or LOC RWY 17L/R approach.

LANDING RUNWAYS 25, 26: From ELLDO on track 137° to cross TOTTT between 15000 and 17000, then on track 137° to YESSS, then on track 133° to cross SKEWD between 13000 and 15000 and at 250K, then on track 118° to cross LEKEE at or above 12000, then on track 118° to XCUTV, then on track 083° to cross CAPTJ at 11000 and at 210K, then on track 083°. Expect RADAR vectors to final approach course.

LANDING RUNWAYS 34L/R, 35L: From ELLDO on track 137° to cross TOTTT between 15000 and 17000, then on track 137° to YESSS, then on track 149° to cross BAACK at or above 13000, then on track 148° to cross BABAA between 12000 and 14000 and at 250K, then on track 173° to cross HIMOM at 11000 and at 210K, then on track 173°. Expect RADAR vectors to final approach course.

LANDING RUNWAY 35R: From ELLDO on track 137° to cross TOTTT between 15000 and 17000, then on track 137° to YESSS, then on track 133° to cross SKEWD between 13000 and 15000 and at 250K, then on track 118° to cross LEKEE at or above 12000, then on track 118° to XCUTV, then on track 117° to cross HDGHG between 12000 and 14000, then on track 118° to FFFAT, then on track 173° to cross DOGGG at 11000 and at 210K, then on track 173°. Expect RADAR vectors to final approach course.

LOST COMMUNICATIONS: In the event of lost communications prior to runway transition assignment, when DEN is landing south, proceed on the ILS RWY 16R, when DEN is landing north, proceed on the ILS RWY 34R.

SW-1, 26 DEC 2024 to 23 JAN 2025

SW-1, 26 DEC 2024 to 23 JAN 2025