


ILS or LOC RWY 17R

DENVER INTL (DEN)

LOC/DME I-ACX 108.5 Chan 22	APP CRS 173°	Rwy Idg TDZE Apt Elev 12000 5392 5434
--	------------------------	---

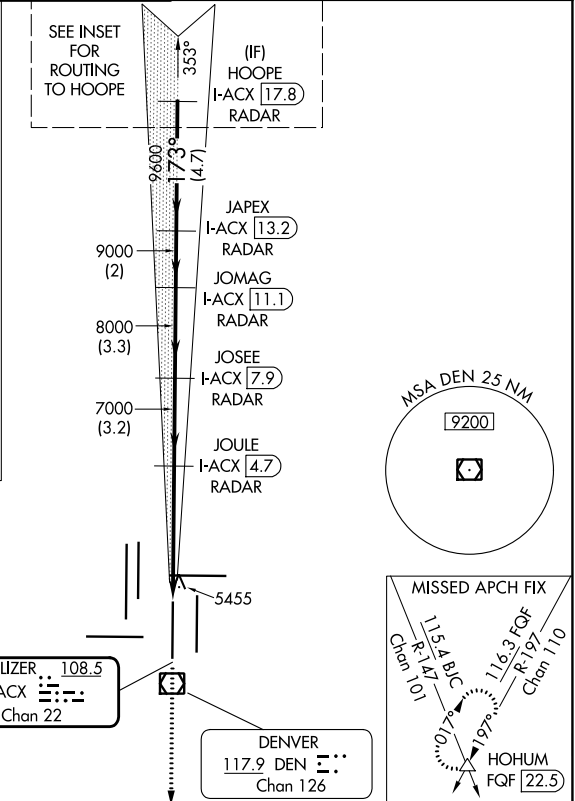
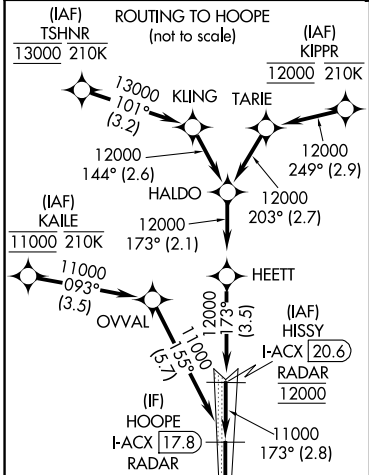
DME or RADAR required for LOC only.
RNAV 1-GPS or RADAR required for procedure entry.

Simultaneous approach authorized. For inop ALS, increase S-17R LOC Cat C/D visibility to RVR 5500.

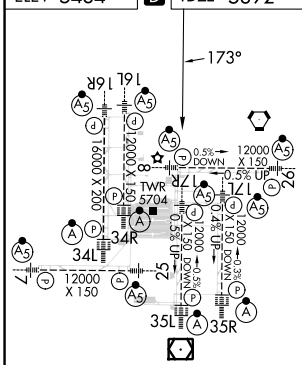
MALSR 

MISSED APPROACH: Climb to 10000 on heading 173° and on FQF VORTAC R-197 to HOHUM INT/ FQF 22.5 DME and hold.

D-ATIS 125.6 379.9 (ARR) 134.025 (DEP)	DENVER APP CON 119.3 307.3 (N) 120.35 379.3 (S)	DENVER TOWER 124.3 322.45	GND CON 121.35 379.175 (W) 121.85 377.1 (E)	CLNC DEL 118.75	CPDLC
--	---	-------------------------------------	---	---------------------------	-------



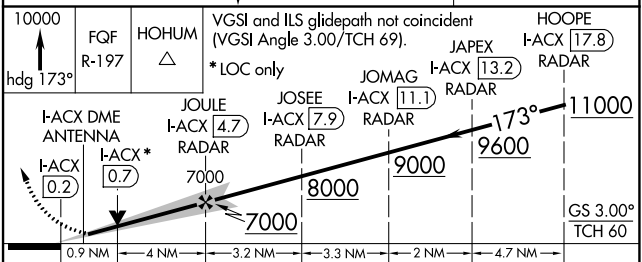
A5824
ELEV 5434 **D** TDZE 5392



TDZ/CL Rwy's 7, 16L, 16R, 17R, 26, 34L, 34R, 35L, 35R
HIRL all Rwy's

FAF to MAP 4.9 NM

Knots	60	90	120	150	180
Min:Sec	4:54	3:16	2:27	1:58	1:38



CATEGORY	A	B	C	D
S-ILS 17R	5592/18 200 (200-1/2)			
S-LOC 17R	5720/24 328 (300-1/2)	5720/30 328 (300-3/8)		

SW-1, 26 DEC 2024 to 23 JAN 2025

SW-1, 26 DEC 2024 to 23 JAN 2025