

# ILS or LOC RWY 7

DENVER INTL (DEN)

LOC/DME I-DZG <b>111.55</b> Chan 52(Y)	APP CRS <b>082°</b>	Rwy ldg <b>12000</b> TDZE <b>5352</b> Apt Elev <b>5434</b>
--	------------------------	--

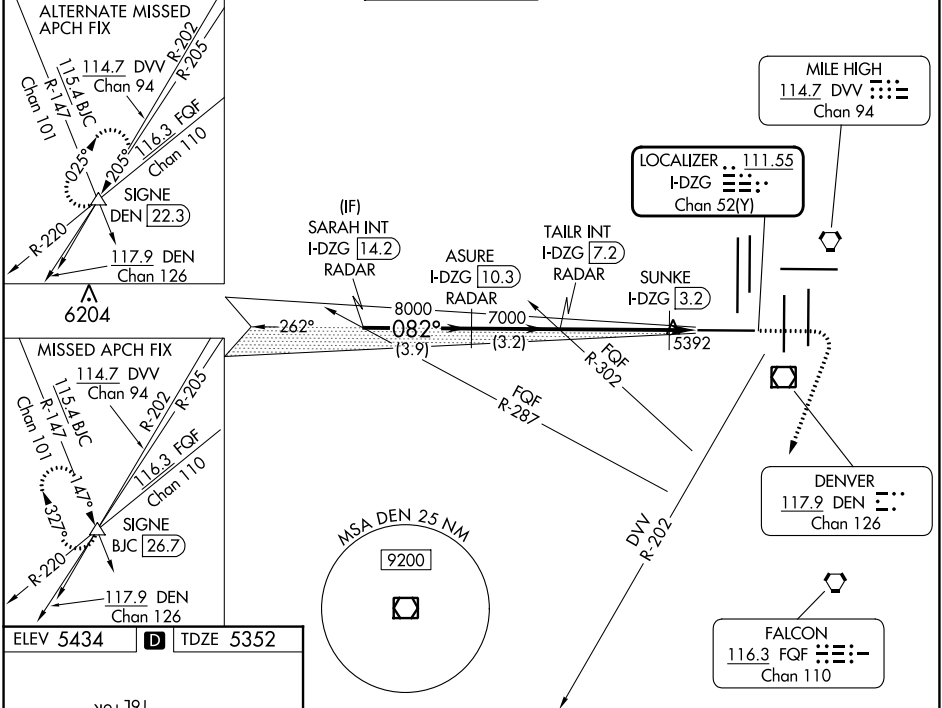
RADAR required for procedure entry.

For improved ALS, increase SUNKE fix Cat C/D visibility to RVR 4500. Simultaneous approach authorized.



MISSED APPROACH: Climb to 5900 then climbing right turn to 11000 on heading 193° and on DVV VORTAC R-202 to SIGNE INT/BJC 26.7 DME and hold. Continue climb-in-hold to 11000.

D-ATIS <b>125.6 379.9</b> (ARR) <b>134.025</b> (DEP)	DENVER APP CON <b>119.3 307.3</b> (N) <b>120.35 379.3</b> (S)	DENVER TOWER <b>128.75 273.55</b>	GND CON <b>121.35 379.175</b> (W) <b>121.85 377.1</b> (E)	CLNC DEL <b>118.75</b>	CPDLC
--	---	--------------------------------------	---	---------------------------	-------

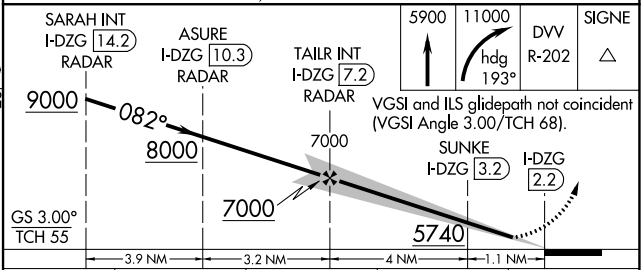


ELEV 5434 **D** TDZE 5352

TDZ/CL Rwy 7, 16L, 16R, 17R, 26, 34L, 34R, 35L, 35R  
HIRL all Rwys

FAF to MAP 5 NM

Knots	60	90	120	150	180
Min:Sec	5:00	3:20	2:30	2:00	1:40



CATEGORY	A	B	C	D
S-ILS 7	5552/18 200 (200-½)			
S-LOC 7	5740/24 388 (400-½)	5740/35 388 (400-⅝)		
SUNKE FIX MINIMUMS				
S-LOC 7	5660/24 308 (300-½)			

SW-1, 26 DEC 2024 to 23 JAN 2025

SW-1, 26 DEC 2024 to 23 JAN 2025