


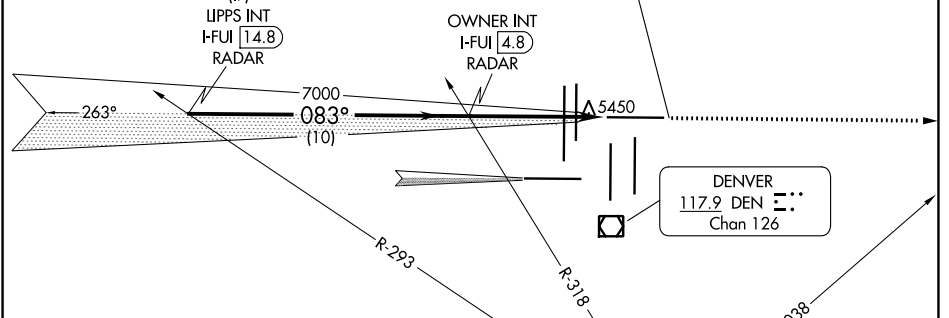
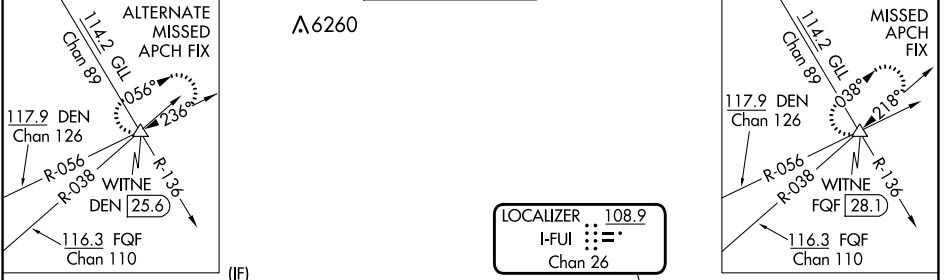
LOC/DME I-FUI <b>108.9</b> Chan 26	APP CRS <b>083°</b>	Rwy Idg <b>12000</b> TDZE <b>5354</b> Apt Elev <b>5434</b>
--	------------------------	--

# ILS or LOC RWY 8

DENVER INTL (DEN)

<p><b>▼</b> Simultaneous approach authorized with Rwy 7. For inoperative MALSRS, increase S-LOC 8 Cat C/D visibility to RVR 5500. ** RVR 1800 authorized with use of FD or AP or HUD to DA.</p>	<p>MALSRS </p>	<p>MISSED APPROACH: Climb to 10000 on heading 083° and on FGF VORTAC R-038 to WITNE INT/FQF 28.1 DME and hold.</p>
---	---	--

D-ATIS <b>125.6 379.9</b> (ARR) <b>134.025</b> (DEP)	DENVER APP CON <b>119.3 307.3</b> (N) <b>120.35 379.3</b> (S)	DENVER TOWER <b>132.35 239.275</b>	GND CON <b>121.35 379.175</b> (W) <b>121.85 377.1</b> (E)	CLNC DEL <b>118.75</b>	CPDLC
--	---	---------------------------------------	---	---------------------------	-------



## RADAR REQUIRED

ELEV 5434	<b>D</b>	TDZE 5354
-----------	----------	-----------

TDZ/CL Rwy 7, 16L, 16R, 17R, 26, 34L, 34R, 35L, 35R  
HIRL all Rws

FAF to MAP 5 NM

Knots	60	90	120	150	180
Min:Sec	5:00	3:20	2:30	2:00	1:40

LIPPS INT I-FUI 14.8 RADAR	VGSIs and ILS glidepaths not coincident (VGSi Angle 3.00/TCH 70).	10000 hdg 083°	FGF R-038	WITNE △
OWNER INT I-FUI 4.8 RADAR	*I-FUI 0.7	*LOC only		

GS 3.00° TCH 52	10 NM	4.1 NM	0.9	
CATEGORY	A	B	C	D
S-ILS 8**	5554/24 200 (200-½)			
S-LOC 8	5700/24	346 (300-½)	5700/30	346 (300-⅝)

SW-1, 26 DEC 2024 to 23 JAN 2025

SW-1, 26 DEC 2024 to 23 JAN 2025