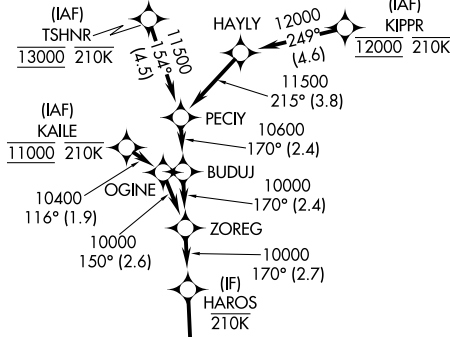
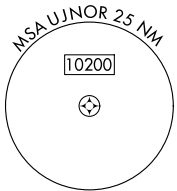


APP CRS 170°	Rwy Idg 16000 TDZE 5326 Apt Elev 5434
------------------------	--

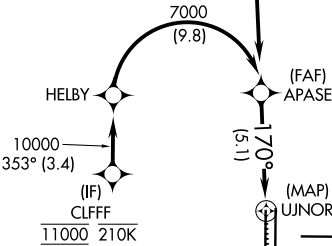
RNAV (RNP) Z RWY 16R

DENVER INTL (DEN)

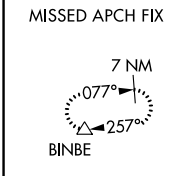
RNP AR APCH - GPS.		MALSR	MISSED APPROACH: Climb to 5900 then climbing right turn to 10000 direct BINBE and hold, continue climb-in-hold to 10000.		
<p>Simultaneous approach authorized. For uncompensated Baro-VNAV systems, procedure NA below -24°C or above 54°C. For inop ALS, increase RNP 0.30 all Cats visibility to RVR 4500.</p>					
D-ATIS 125.6 379.9 (ARR) 134.025 (DEP)	DENVER APP CON 119.3 307.3 (N) 120.35 379.3 (S)	DENVER TOWER 135.3 351.95	GND CON 121.35 379.175 (W) 121.85 377.1 (E)	CLNC DEL 118.75	CPDLC



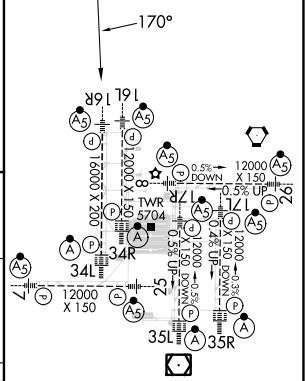
△ 6260



Final approach course offset 3.00°.



ELEV 5434	D	TDZE 5326
-----------	----------	-----------



APASE 7000	VGS1 and RNAV glidepath not coincident (VGS1 Angle 3.00/TCH 71).		5900	10000	BINBE
7000	170°		↑	↘	△
GP 3.00° TCH 55	See planview for multiple IF locations.		UJNOR		
5.1 NM					
CATEGORY	A	B	C	D	
RNP 0.30 DA	5596/24 270 (200-½)				
AUTHORIZATION REQUIRED					

HIRL all Rwys
 TDZ/CL Rwys 7, 16L, 16R, 17R,
 26, 34L, 34R, 35L, 35R

SW-1, 26 DEC 2024 to 23 JAN 2025

SW-1, 26 DEC 2024 to 23 JAN 2025