

APP CRS Rwy Idg **12000**
 263° TDZE **5309**
 Apt Elev **5434**


RNAV (RNP) Z RWY 26

DENVER INTL (DEN)

RNP AR APCH.

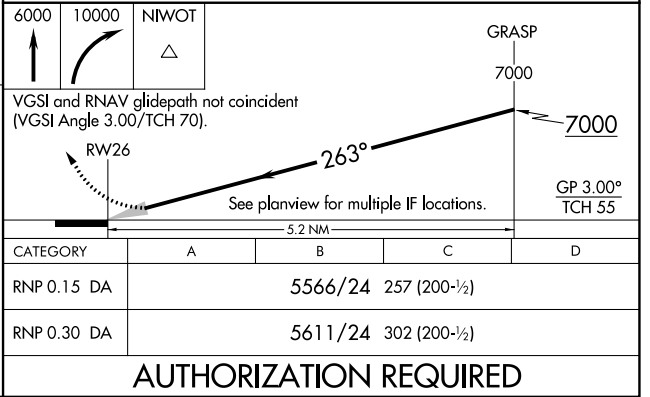
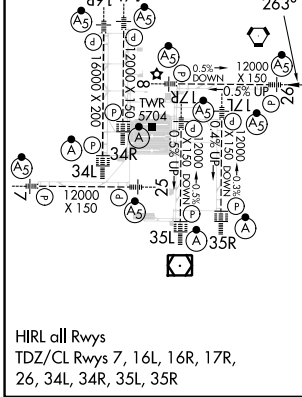
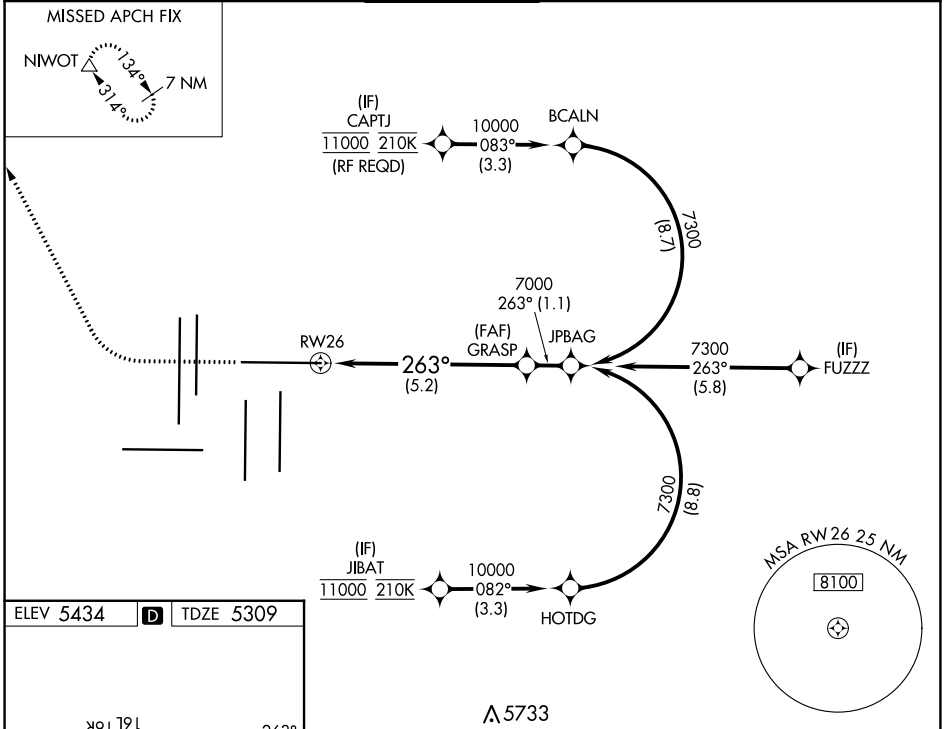
▼ Simultaneous approach authorized. For uncompensated Baro-VNAV systems, procedure NA below -23°C or above 54°C. For inop ALS, increase RNP 0.15 all Cats visibility to RVR 4000, and increase RNP 0.30 all Cats visibility to RVR 4500.

MALSR



MISSED APPROACH: Climb to 6000 then climbing right turn to 10000 direct NIWOT and hold.

D-ATIS 125.6 379.9 (ARR) 134.025 (DEP)	DENVER APP CON 119.3 307.3 (N) 120.35 379.3 (S)	DENVER TOWER 132.35 239.275	GND CON 121.35 379.175 (W) 121.85 377.1 (E)	CLNC DEL 118.75	CPDLC
--	---	---------------------------------------	---	---------------------------	-------



AUTHORIZATION REQUIRED

SW-1, 26 DEC 2024 to 23 JAN 2025

SW-1, 26 DEC 2024 to 23 JAN 2025