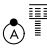


APP CRS 353°	Rwy Idg 12000 TDZE 5354 Apt Elev 5434
------------------------	--

RNAV (RNP) Z RWY 34R

DENVER INTL (DEN)

▼ For uncompensated Baro-VNAV systems, procedure NA below -25°C (-13°F) or above 46°C (114°F). GPS required. For inoperative ALSF, increase RNP 0.10 all Cats visibility to RVR 6000 and RNP 0.20 all Cats visibility to 1½ mile and RNP 0.30 all Cats visibility to 2¼ mile. Simultaneous approach authorized. Use of FD or AP providing RNAV track guidance required during simultaneous operations.

ALSF-2

 MISSED APPROACH:
 Climb to 6000 then climbing left turn to 10000 direct HYGEN and hold.

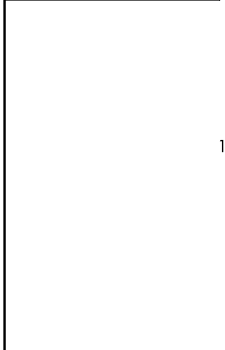
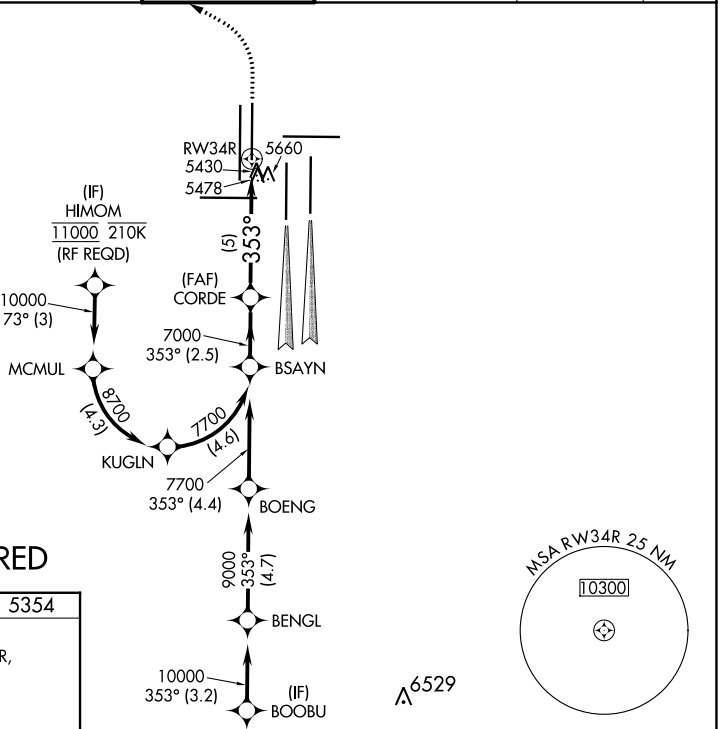
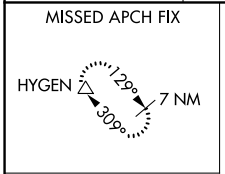
D-ATIS 125.6 379.9 (ARR) 134.025 (DEP)	DENVER APP CON 119.3 307.3 (N) 120.35 379.3 (S)
--	---

DENVER TOWER 135.3 351.95

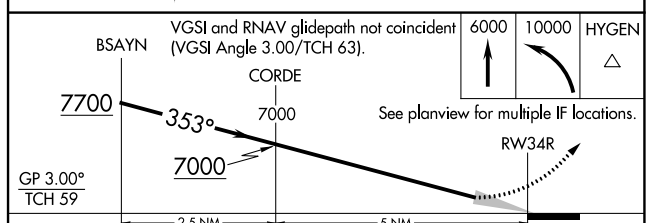
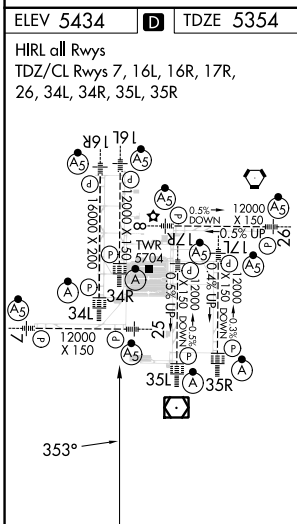
GND CON 121.35 379.175 (W) 121.85 377.1 (E)

CLNC DEL 118.75

CPDLC



RADAR REQUIRED



CATEGORY	A	B	C	D
RNP 0.10 DA	5739/40 385 (400-¾)			
RNP 0.20 DA	5849/60 495 (500-1¼)			
RNP 0.30 DA	5980-1½ 626 (600-1½)			

SW-1, 26 DEC 2024 to 23 JAN 2025

SW-1, 26 DEC 2024 to 23 JAN 2025