

WAAS CH 40428 W25A	APP CRS 263°	Rwy Idg 12000 TDZE 5355 Apt Elev 5434
--	------------------------	--

RNAV (GPS) Y RWY 25

DENVER INTL (DEN)

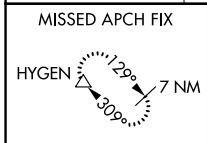
▼ For uncompensated Baro-VNAV systems, LNAV/VNAV NA below -25°C (-13°F) or above 46°C (116°F). Simultaneous approach authorized with Rwy 26. DME/DME RNP-0.3 NA. Use of FD or AP providing track guidance required during simultaneous operations. LNAV procedure NA during simultaneous operations. For inoperative MALSR, increase LNAV/VNAV all Cats visibility to RVR 4500. #RVR 1800 authorized with use of FD or AP or HUD to DA.

MALSR

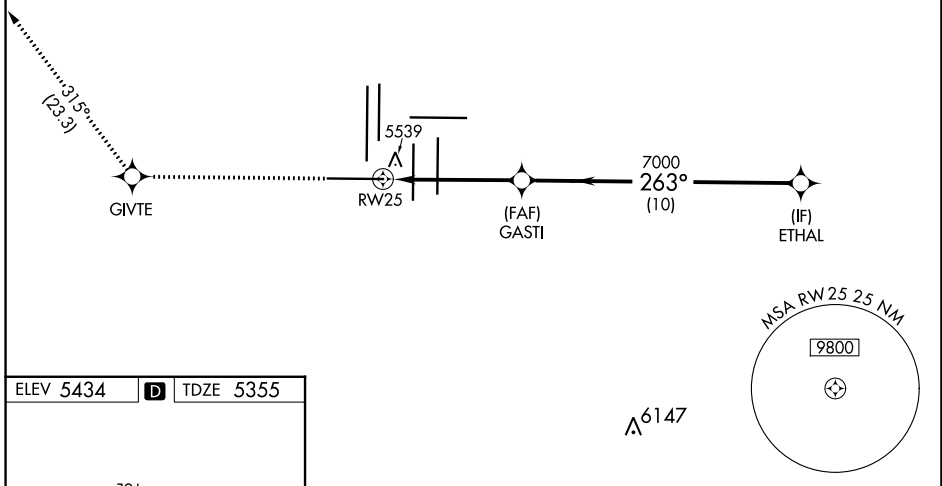


MISSED APPROACH: Climb to 10000 direct GIVTE and on track 315° to HYGEN and hold.

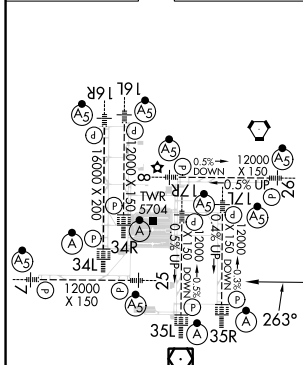
D-ATIS 125.6 379.9 (ARR) 134.025 (DEP)	DENVER APP CON 119.3 307.3 (N) 120.35 379.3 (S)	DENVER TOWER 128.75 273.55	GND CON 121.35 379.175 (W) 121.85 377.1 (E)	CLNC DEL 118.75	CPDLC
--	---	--------------------------------------	---	---------------------------	-------



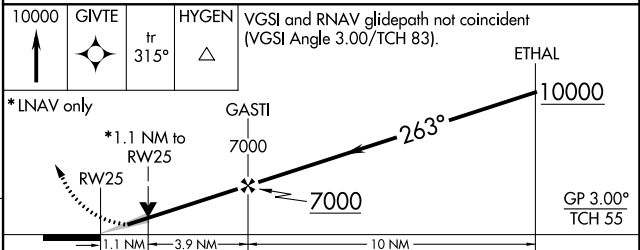
RADAR REQUIRED



ELEV 5434	D	TDZE 5355
-----------	----------	-----------



HIRL all Rwy's
TDZ/CL Rwy's 7, 16L, 16R, 17R,
26, 34L, 34R, 35L, 35R



CATEGORY	A	B	C	D
LPV DA#	5555/24		200 (200-½)	
LNAV/VNAV DA	5700/30		345 (300-⅝)	
LNAV MDA	5800/24 445 (400-½)		5800/45 445 (400-⅞)	