

**TOP ALTITUDE:
FL230**

D-ATIS DEP
134.025
CLNC DEL
118.75
CPDLC
DENVER DEP CON
126.1 360.75



TAKEOFF MINIMUMS

Rwys 7, 26: NA-ATC.

Rwy 8: Standard.

Rwy 16L: Standard with minimum climb of 400' per NM to 5934, then minimum climb of 220' per NM to 14000.

Rwy 16R: Standard with minimum climb of 400' per NM to 5934, then minimum climb of 225' per NM to 14800.

Rwy 17L: Standard with minimum climb of 400' per NM to 5934, then minimum climb of 210' per NM to 15500.

Rwy 17R: Standard with minimum climb of 400' per NM to 5934, then minimum climb of 215' per NM to 14300.

Rwy 25: Standard with minimum climb of 425' per NM to 5934, then minimum climb of 230' per NM to 15700.

Rwy 34L: Standard with minimum climb of 400' per NM to 5934, then minimum climb of 230' per NM to 14600.

Rwy 34R: Standard with minimum climb of 400' per NM to 5934, then minimum climb of 220' per NM to 15700.

Rwy 35L: Standard with minimum climb of 400' per NM to 5934, then minimum climb of 215' per NM to 14000.

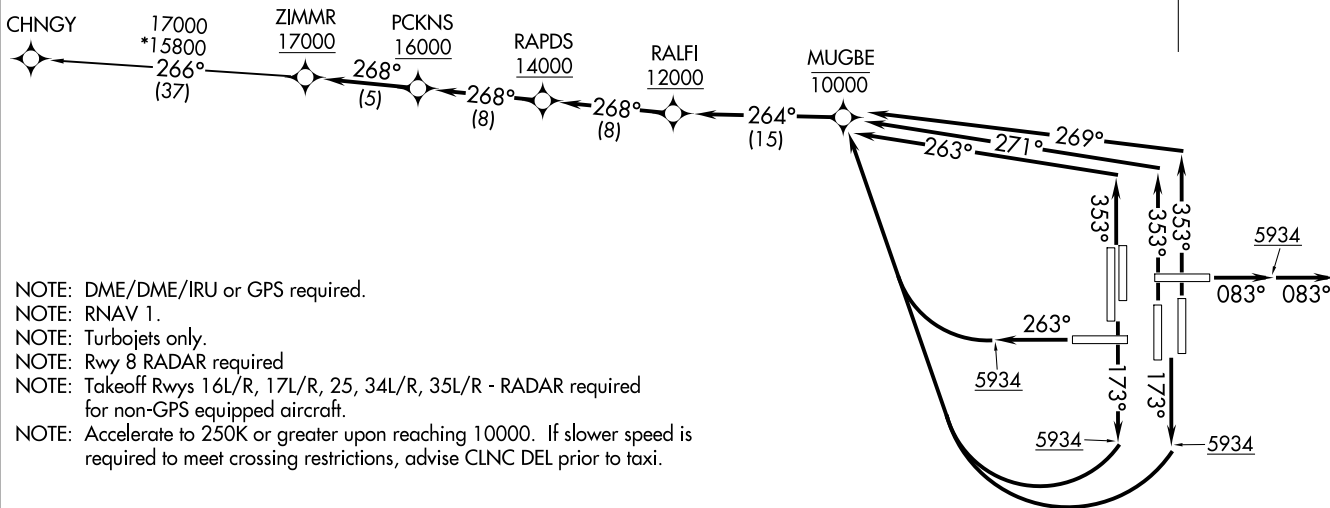
Rwy 35R: Standard with minimum climb of 400' per NM to 5934, then minimum climb of 210' per NM to 14500.

ZIMMR THREE DEPARTURE (RNAV)
(ZIMMR3.ZIMMR) 12AUG21

(ZIMMR3.ZIMMR) 21224
ZIMMR THREE DEPARTURE (RNAV)

AL-9077 (FAA)

DENVER INTL (DEN)
DENVER, COLORADO



NOTE: DME/DME/IRU or GPS required.

NOTE: RNAV 1.

NOTE: Turbojets only.

NOTE: Rwy 8 RADAR required

NOTE: Takeoff Rwys 16L/R, 17L/R, 25, 34L/R, 35L/R - RADAR required for non-GPS equipped aircraft.

NOTE: Accelerate to 250K or greater upon reaching 10000. If slower speed is required to meet crossing restrictions, advise CLNC DEL prior to taxi.

(NARRATIVE ON FOLLOWING PAGE)

NOTE: Chart not to scale.

DENVER, COLORADO
DENVER INTL (DEN)



DEPARTURE ROUTE DESCRIPTION
SEE ADDITIONAL REQUIREMENTS ON AAUP

TAKEOFF RUNWAY 8: Climb on heading 083° to 5934, then on heading 083° or as assigned by ATC, expect vectors to cross RALFI at or above 12000, thence. . .

TAKEOFF RUNWAYS 16L/R, 17L/R: Climb on heading 173° to 5934, then right turn direct MUGBE at or below 10000, then on track 264° to cross RALFI at or above 12000, thence. . .

TAKEOFF RUNWAY 25: Climb on heading 263° to 5934, then right turn direct MUGBE at or below 10000, then on track 264° to cross RALFI at or above 12000, thence. . .

TAKEOFF RUNWAYS 34L/R: Climb on heading 353° to intercept course 263° to cross MUGBE at or below 10000, then on track 264° to cross RALFI at or above 12000, thence. . .

TAKEOFF RUNWAY 35L: Climb on heading 353° to intercept course 271° to cross MUGBE at or below 10000, then on track 264° to cross RALFI at or above 12000, thence. . .

TAKEOFF RUNWAY 35R: Climb on heading 353° to intercept course 269° to cross MUGBE at or below 10000, then on track 264° to cross RALFI at or above 12000, thence. . .

. . . on track 268° to cross RAPDS at or above 14000, then on track 268° to cross PCKNS at or above 16000, then on track 268° to cross ZIMMR at or above 17000. Then on (transition), maintain FL230 or filed lower altitude. Expect higher filed altitude ten minutes after departure.

CHNGY TRANSITION (ZIMMR3.CHNGY)

SW-1, 26 DEC 2024 to 23 JAN 2025

SW-1, 26 DEC 2024 to 23 JAN 2025